

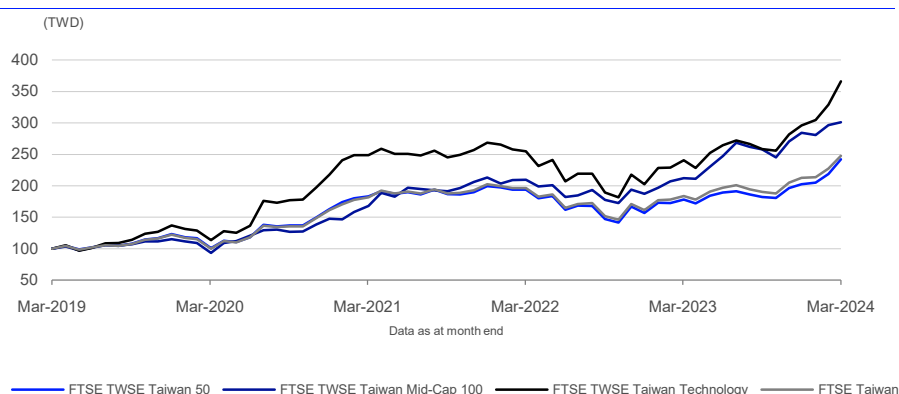
FTSE TWSE Taiwan Index Series

Data as at: 29 March 2024

FTSE Group has partnered with the Taiwan Stock Exchange (TWSE) to calculate the FTSE TWSE Taiwan Index Series, combining both local knowledge and international indexing capabilities, to create a family of eight indices for both domestic and international investors.

The index series provides exposure to the Taiwanese market with coverage of up to 150 stocks. The FTSE TWSE Taiwan 50 is the headline index, representing the performance of the top 50 Taiwanese companies by market capitalisation that meet the relevant investability screening requirements set by FTSE.

5-Year Performance - Total Return



Note: FTSE Taiwan Index, which is displayed in the time-series chart above and in tables below, is part of the FTSE Global Equity Index Series. See www.ftse.com/geis for more information.

Performance and Volatility - Total Return

Index (TWD)	Return %						Return pa %*		Volatility %**		
	3M	6M	YTD	12M	3YR	5YR	3YR	5YR	1YR	3YR	5YR
FTSE TWSE Taiwan 50	19.5	33.0	19.5	36.2	32.4	142.2	9.8	19.4	14.8	18.5	20.8
FTSE TWSE Taiwan Mid-Cap 100	5.9	16.9	5.9	41.9	79.3	201.1	21.5	24.7	14.7	18.2	19.3
FTSE TWSE Taiwan Technology	23.8	41.7	23.8	52.3	47.4	266.3	13.8	29.6	17.8	22.2	25.3
FTSE Taiwan	16.7	30.3	16.7	35.1	36.7	147.9	11.0	19.9	13.6	18.2	20.3

* Compound annual returns measured over 3 and 5 years respectively

** Volatility – 1YR based on 12 months daily data. 3YR based on weekly data (Wednesday to Wednesday). 5YR based on monthly data

Year-on-Year Performance - Total Return

Index % (TWD)	2014	2015	2016	2017	2018	2019	2020	2021	2022	2023
FTSE TWSE Taiwan 50	17.6	-5.7	19.1	18.8	-4.4	33.7	32.3	22.4	-21.5	29.3
FTSE TWSE Taiwan Mid-Cap 100	4.1	-15.0	7.3	27.7	-7.5	30.8	28.3	44.4	-12.3	52.1
FTSE TWSE Taiwan Technology	29.2	-9.3	21.7	27.2	-4.2	50.2	59.2	23.4	-24.6	46.1
FTSE TWSE Taiwan Eight Industries	6.7	-5.9	14.3	15.2	-9.5	20.6	9.5	29.1	-12.4	8.8
FTSE Taiwan	16.9	-7.4	17.6	18.9	-4.1	33.0	32.1	25.5	-20.5	31.8

FEATURES

Coverage

The FTSE TWSE Taiwan 50 Index represents over 70% of the Taiwanese market. The FTSE TWSE Taiwan 100 Index, which comprises the next 100 companies by full market capitalisation, represents over 20% of the Taiwanese market.

Versatility

Other indices in the FTSE TWSE Taiwan family include:

- FTSE TWSE Taiwan Dividend+ Index
- FTSE TWSE Taiwan Eight Industries Index
- FTSE TWSE Taiwan Technology Index
- FTSE TWSE RAFI Taiwan 50 Index
- FTSE TWSE RAFI Taiwan 100 Index
- FTSE TWSE Taiwan Shariah Index

Objective

The indices are designed for the creation of index tracking funds, derivatives and as a performance benchmark.

Investability

Stocks are selected and weighted to ensure that the index is investable.

Liquidity

Stocks are screened to ensure that the index is tradable.

Transparency

The indices use a transparent, rules-based construction process. Index Rules are freely available on the FTSE website.

Availability

The indices are calculated based on price and total return methodologies, both real time and end-of-day.

Industry Classification Benchmark

Index constituents are categorized in accordance with the Industry Classification Benchmark (ICB), the global standard for industry sector analysis.

Return/Risk Ratio and Drawdown - Total Return

Index (TWD)	Return/Risk Ratio				Drawdown (%)			
	1YR	3YR	5YR	10YR	1YR	3YR	5YR	10YR
FTSE TWSE Taiwan 50	2.6	0.5	0.9	0.9	-7.2	-34.0	-34.0	-34.0
FTSE TWSE Taiwan Mid-Cap 100	3.1	1.2	1.3	0.8	-10.9	-21.3	-31.9	-31.9
FTSE TWSE Taiwan Technology	3.2	0.6	1.2	1.0	-7.8	-37.9	-37.9	-37.9
FTSE TWSE Taiwan Eight Industries	0.3	0.2	0.5	0.5	-10.4	-26.3	-29.1	-29.1
FTSE Taiwan	2.5	0.6	1.0	0.9	-7.9	-32.3	-32.3	-32.3

Return/Risk Ratio – based on compound annual returns and volatility in Performance and Volatility table
Drawdown - based on daily data

Top 10 Constituents - FTSE TWSE Taiwan 50 Index

Constituent	ICB Sector	Net MCap (TWDm)	Wgt %
Taiwan Semiconductor Manufacturing	Technology Hardware and Equipment	18,696,405	51.39
Hon Hai Precision Industry	Technology Hardware and Equipment	1,788,950	4.92
MediaTek	Technology Hardware and Equipment	1,777,557	4.89
Quanta Computer	Technology Hardware and Equipment	780,426	2.15
Delta Electronics	Electronic and Electrical Equipment	736,246	2.02
United Microelectronics	Technology Hardware and Equipment	611,886	1.68
CTBC Financial Holding	Banks	601,937	1.65
ASE Technology Holding	Technology Hardware and Equipment	549,709	1.51
Fubon Financial Holdings	Life Insurance	539,293	1.48
Chunghwa Telecom	Telecommunications Service Providers	478,945	1.32
Totals		26,561,353	73.01

Top 10 Constituents - FTSE TWSE Mid-Cap 100 Index

Constituent	ICB Sector	Net MCap (TWDm)	Wgt %
Asia Vital Components	Technology Hardware and Equipment	155,396	2.14
Gigabyte Technology	Technology Hardware and Equipment	154,676	2.13
Inventec Co.	Technology Hardware and Equipment	153,258	2.11
Compal Electronics	Technology Hardware and Equipment	148,738	2.05
WPG Holdings	Technology Hardware and Equipment	141,796	1.96
Powertech Technology	Technology Hardware and Equipment	137,582	1.90
Chicony Electronics	Technology Hardware and Equipment	136,673	1.89
Acer	Technology Hardware and Equipment	132,954	1.83
Catcher Technology	Technology Hardware and Equipment	132,348	1.83
Innolux	Technology Hardware and Equipment	127,285	1.76
Totals		1,420,705	19.60

Top 10 Constituents - FTSE TWSE Taiwan Technology Index

Constituent	ICB Sector	Net MCap (TWDm)	Wgt %
Taiwan Semiconductor Manufacturing	Technology Hardware and Equipment	18,696,405	59.65
Hon Hai Precision Industry	Technology Hardware and Equipment	1,788,950	5.71
MediaTek	Technology Hardware and Equipment	1,777,557	5.67
Quanta Computer	Technology Hardware and Equipment	780,426	2.49
United Microelectronics	Technology Hardware and Equipment	611,886	1.95
ASE Technology Holding	Technology Hardware and Equipment	549,709	1.75
Wistron Corp	Technology Hardware and Equipment	356,539	1.14
Novatek Microelectronics	Technology Hardware and Equipment	345,488	1.10
Asustek Computer Inc	Technology Hardware and Equipment	302,746	0.97
Realtek Semiconductor	Technology Hardware and Equipment	266,180	0.85
Totals		25,475,886	81.27

INFORMATION

Index Universe

TWSE Board Universe

Index Launches

FTSE TWSE Taiwan 50 Index:

29 October 2002

FTSE TWSE Taiwan Mid-Cap 100 / FTSE

TWSE Taiwan Technology Indices:

29 November 2004

Base Date

FTSE TWSE Taiwan 50 Index: 30 April 2002

FTSE TWSE Taiwan Mid-Cap 100 / FTSE

TWSE Taiwan Technology Indices:

30 June 2003

Base Value

5000

Investability Screen

Free-float adjusted and liquidity screened

Index Calculation

Real-time and end-of-day indices available

End-of-Day Distribution

Via FTP and email

Currency

TWD and USD. Real-time in TWD only.

Review Dates

Quarterly in March, June, September and

December

History

Available from April 1997

ICB Supersector Breakdown

		FTSE TWSE Taiwan 50			FTSE TWSE Taiwan Mid-Cap 100			FTSE Taiwan		
ICB Code	ICB Supersector	No. of Cons	Net MCap (TWDm)	Wgt %	No. of Cons	Net MCap (TWDm)	Wgt %	No. of Cons	Net MCap (TWDm)	Wgt %
1010	Technology	19	27,325,842	75.11	46	4,019,737	55.45	55	31,014,491	73.44
1510	Telecommunications	4	1,056,996	2.91	1	57,057	0.79	5	1,091,336	2.58
2010	Health Care	-	-	-	3	97,853	1.35	2	137,782	0.33
3010	Banks	10	3,049,139	8.38	4	229,335	3.16	12	3,169,021	7.50
3020	Financial Services	2	611,273	1.68	2	59,163	0.82	3	649,524	1.54
3030	Insurance	3	1,206,447	3.32	1	108,137	1.49	4	1,314,583	3.11
3510	Real Estate	-	-	-	3	130,286	1.80	1	54,444	0.13
4010	Automobiles and Parts	-	-	-	3	164,990	2.28	4	168,016	0.40
4020	Consumer Products and Services	-	-	-	8	558,745	7.71	5	385,655	0.91
4040	Retailers	1	209,093	0.57	1	28,395	0.39	2	237,488	0.56
4050	Travel and Leisure	-	-	-	2	141,355	1.95	2	141,355	0.33
4510	Food Beverage and Tobacco	1	371,308	1.02	2	117,014	1.61	1	371,308	0.88
4520	Personal Care Drug and Grocery Stores	1	149,501	0.41	-	-	-	1	149,501	0.35
5010	Construction and Materials	1	212,536	0.58	1	100,990	1.39	2	313,526	0.74
5020	Industrial Goods and Services	4	1,318,009	3.62	15	1,066,904	14.72	16	2,067,441	4.90
5510	Basic Resources	1	294,570	0.81	6	284,643	3.93	2	317,201	0.75
5520	Chemicals	2	479,479	1.32	2	84,104	1.16	4	555,761	1.32
6010	Energy	1	94,806	0.26	-	-	-	1	94,806	0.22
Totals		50	36,378,999	100.00	100	7,248,708	100.00	122	42,233,240	100.00

Index Characteristics

Attributes	FTSE TWSE Taiwan 50	FTSE TWSE Taiwan Mid-Cap 100	FTSE TWSE Taiwan Technology	FTSE Taiwan
Number of constituents	50	100	65	122
Net MCap (TWDm)	36,378,999	7,248,708	31,345,578	42,233,240
Dividend Yield %	2.79	3.31	2.60	2.86
Constituent Sizes (Net MCap TWDm)				
Average	727,580	72,487	482,240	346,174
Largest	18,696,405	155,396	18,696,405	18,696,405
Smallest	78,332	10,295	10,295	3,026
Median	249,206	72,105	108,717	124,662
Weight of Largest Constituent (%)	51.39	2.14	59.65	44.27
Top 10 Holdings (% Index MCap)	73.01	19.60	81.27	62.89



© 2024 London Stock Exchange Group plc and its applicable group undertakings ("LSEG"). LSEG includes (1) FTSE International Limited ("FTSE"), (2) Frank Russell Company ("Russell"), (3) FTSE Global Debt Capital Markets Inc. and FTSE Global Debt Capital Markets Limited (together, "FTSE Canada"), (4) FTSE Fixed Income Europe Limited ("FTSE FI Europe"), (5) FTSE Fixed Income LLC ("FTSE FI"), (6) FTSE (Beijing) Consulting Limited ("WOFE") (7) Refinitiv Benchmark Services (UK) Limited ("RBSL"), (8) Refinitiv Limited ("RL") and (9) Beyond Ratings S.A.S. ("BR"). All rights reserved.

FTSE Russell® is a trading name of FTSE, Russell, FTSE Canada, FTSE FI, FTSE FI Europe, WOFE, RBSL, RL, and BR. "FTSE®", "Russell®", "FTSE Russell®", "FTSE4Good®", "ICB®", "Refinitiv", "Beyond Ratings®", "WMR™", "FR™" and all other trademarks and service marks used herein (whether registered or unregistered) are trademarks and/or service marks owned or licensed by the applicable member of LSEG or their respective licensors and are owned, or used under licence, by FTSE, Russell, FTSE Canada, FTSE FI, FTSE FI Europe, WOFE, RBSL, RL or BR. FTSE International Limited is authorised and regulated by the Financial Conduct Authority as a benchmark administrator. Refinitiv Benchmark Services (UK) Limited is authorised and regulated by the Financial Conduct Authority as a benchmark administrator. TWSE is a trade mark of Taiwan Stock Exchange Corporation ("TWSE") ("Partner"). All rights in and to the FTSE TWSE Taiwan Index Series ("Index") vest in FTSE Russell® and/or its relevant Partner(s).

All information is provided for information purposes only. All information and data contained in this publication is obtained by LSEG, from sources believed by it to be accurate and reliable. Because of the possibility of human and mechanical inaccuracy as well as other factors, however, such information and data is provided "as is" without warranty of any kind. No member of LSEG nor their respective directors, officers, employees, partners or licensors make any claim, prediction, warranty or representation whatsoever, expressly or impliedly, either as to the accuracy, timeliness, completeness, merchantability of any information or LSEG Products, or of results to be obtained from the use of LSEG products, including but not limited to indices, rates, data and analytics, or the fitness or suitability of the LSEG products for any particular purpose to which they might be put. The user of the information assumes the entire risk of any use it may make or permit to be made of the information.

No responsibility or liability can be accepted by any member of LSEG nor their respective directors, officers, employees, partners or licensors for (a) any loss or damage in whole or in part caused by, resulting from, or relating to any inaccuracy (negligent or otherwise) or other circumstance involved in procuring, collecting, compiling, interpreting, analysing, editing, transcribing, transmitting, communicating or delivering any such information or data or from use of this document or links to this document or (b) any direct, indirect, special, consequential or incidental damages whatsoever, even if any member of LSEG is advised in advance of the possibility of such damages, resulting from the use of, or inability to use, such information.

No member of LSEG nor their respective directors, officers, employees, partners or licensors provide investment advice and nothing in this document should be taken as constituting financial or investment advice. No member of LSEG nor their respective directors, officers, employees, partners or licensors make any representation regarding the advisability of investing in any asset or whether such investment creates any legal or compliance risks for the investor. A decision to invest in any such asset should not be made in reliance on any information herein. Indices and rates cannot be invested in directly. Inclusion of an asset in an index or rate is not a recommendation to buy, sell or hold that asset nor confirmation that any particular investor may lawfully buy, sell or hold the asset or an index or rate containing the asset. The general information contained in this publication should not be acted upon without obtaining specific legal, tax, and investment advice from a licensed professional.

Past performance is no guarantee of future results. Charts and graphs are provided for illustrative purposes only. Index and/or rate returns shown may not represent the results of the actual trading of investable assets. Certain returns shown may reflect back-tested performance. All performance presented prior to the index or rate inception date is back-tested performance. Back-tested performance is not actual performance, but is hypothetical. The back-test calculations are based on the same methodology that was in effect when the index or rate was officially launched. However, back-tested data may reflect the application of the index or rate methodology with the benefit of hindsight, and the historic calculations of an index or rate may change from month to month based on revisions to the underlying economic data used in the calculation of the index or rate.

No part of this information may be reproduced, stored in a retrieval system or transmitted in any form or by any means, electronic, mechanical, photocopying, recording or otherwise, without prior written permission of the applicable member of LSEG. Use and distribution of LSEG data requires a licence from LSEG and/or its licensors.

Data definitions available from
info@ftserussell.com

To learn more, visit lseg.com/ftse-russell;
 email info@ftserussell.com; or
 call your regional Client Services Team office:

EMEA

+44 (0) 20 7866 1810

North America

+1 877 503 6437

Asia-Pacific

Hong Kong +852 2164 3333

Tokyo +81 3 6441 1430

Sydney +61 (0) 2 7228 5659