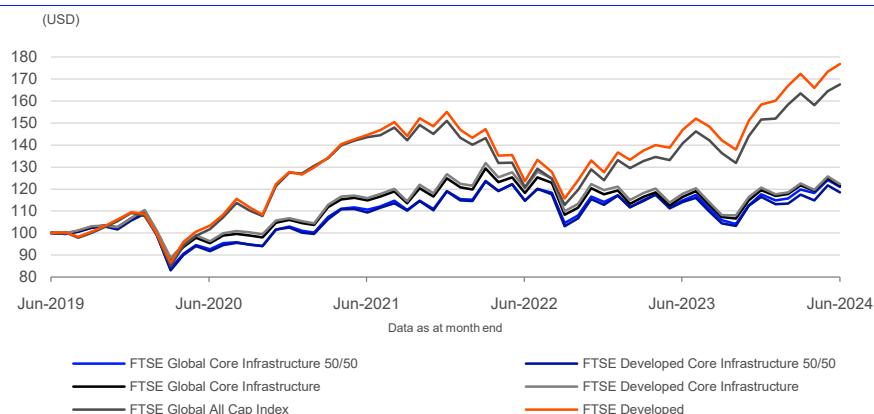


FTSE Core Infrastructure 50/50 Indices

Data as at: 28 June 2024

The FTSE Global Core Infrastructure 50/50 Index and FTSE Developed Core Infrastructure 50/50 Index give participants an industry-defined interpretation of infrastructure and adjust the exposure to certain infrastructure sub-sectors. The constituent weights for these indices are adjusted as part of the semi-annual review according to three broad industry sectors – 50% Utilities, 30% Transportation including capping of 7.5% for railroads/railways and a 20% mix of other sectors including pipelines, satellites and telecommunication towers. Company weights within each group are adjusted in proportion to their investable market capitalisation.

5-Year Performance - Total Return



Performance and Volatility - Total Return

Index (USD)	Return %						Return pa %*		Volatility %**		
	3M	6M	YTD	12M	3YR	5YR	3YR	5YR	1YR	3YR	5YR
FTSE Global Core Infrastructure 50/50	1.0	2.8	2.8	5.3	9.3	20.9	3.0	3.9	11.3	15.0	16.5
FTSE Developed Core Infrastructure 50/50	0.8	1.7	1.7	3.8	8.4	18.5	2.7	3.4	12.1	15.6	17.2
FTSE Global Core Infrastructure	-0.1	1.7	1.7	4.3	5.8	21.5	1.9	4.0	11.8	15.6	16.1
FTSE Developed Core Infrastructure	-0.3	1.2	1.2	3.6	5.5	22.2	1.8	4.1	12.4	16.2	16.2
FTSE Global All Cap Index	2.5	10.5	10.5	19.0	16.6	67.5	5.3	10.9	9.6	15.6	17.7
FTSE Developed	2.6	11.6	11.6	20.4	22.4	76.9	7.0	12.1	9.7	15.9	17.8

* Compound annual returns measured over 3 and 5 years respectively

** Volatility – 1YR based on 12 months daily data. 3YR based on weekly data (Wednesday to Wednesday). 5YR based on monthly data

Year-on-Year Performance - Total Return

Index % (USD)	2014	2015	2016	2017	2018	2019	2020	2021	2022	2023
FTSE Global Core Infrastructure 50/50	16.2	-8.0	11.8	19.3	-3.2	26.1	-3.3	15.7	-4.1	3.1
FTSE Developed Core Infrastructure 50/50	16.8	-6.7	11.6	19.2	-3.7	26.2	-3.0	15.9	-5.0	3.2
FTSE Global Core Infrastructure	18.9	-10.6	13.1	16.9	-0.9	26.3	-0.7	17.8	-5.8	1.6
FTSE Developed Core Infrastructure	20.1	-10.7	13.1	16.2	-0.5	26.4	0.1	18.8	-5.8	1.0
FTSE Global All Cap Index	4.5	-1.7	9.0	24.4	-9.6	27.1	16.8	18.5	-17.9	22.2
FTSE Developed	5.1	-0.3	8.2	23.9	-8.6	28.0	16.7	21.4	-17.8	24.2

FEATURES

Coverage

Constituents are selected from the FTSE Global All Cap Index using FTSE Russell's definition of infrastructure. FTSE Russell applies minimum infrastructure revenue thresholds of 65% for constituents of the Core Infrastructure indices and 20% for constituents of the Infrastructure Opportunities indices.

Objective

The indices are designed for the creation of index tracking funds, derivatives and as a performance benchmark.

Investability

Stocks are selected and weighted to ensure that the index is investable.

Liquidity

Stocks are screened to ensure that the index is tradable.

Capping

The indices are capped semi-annually to adjust the exposure to certain infrastructure sub-sectors and limit company weights to 5%.

Transparency

Index methodologies are freely available on the FTSE Russell website.

Availability

The indices are calculated based on price and total return methodologies, on an end-of-day basis. Tax adjusted and hedged versions of the indices are also available.

Industry Classification Benchmark (ICB)

Index constituents are categorized in accordance with the Industry Classification Benchmark (ICB), the global standard for industry sector analysis. Constituents are screened according to ICB Subsectors that meet FTSE's definition of infrastructure.

Return/Risk Ratio and Drawdown - Total Return

Index (USD)	Return/Risk Ratio				Drawdown (%)			
	1YR	3YR	5YR	10YR	1YR	3YR	5YR	10YR
FTSE Global Core Infrastructure 50/50	0.5	0.2	0.2	0.4	-13.8	-20.4	-36.8	-36.8
FTSE Developed Core Infrastructure 50/50	0.4	0.2	0.2	0.4	-14.3	-22.1	-37.6	-37.6
FTSE Global Core Infrastructure	0.4	0.1	0.2	0.4	-13.9	-20.8	-35.3	-35.3
FTSE Developed Core Infrastructure	0.4	0.1	0.3	0.4	-14.3	-21.7	-35.2	-35.2
FTSE Global All Cap Index	2.0	0.3	0.6	0.6	-10.8	-26.1	-34.3	-34.3
FTSE Developed	2.2	0.4	0.7	0.6	-10.4	-26.1	-34.0	-34.0

Return/Risk Ratio – based on compound annual returns and volatility in Performance and Volatility table
Drawdown - based on daily data

Top 10 Constituents - FTSE Global Core Infrastructure 50/50

Constituent	Country/Market	ICB Sector	Net MCap (USDm)	Wgt %
NextEra Energy Inc	USA	Electricity	143,923	5.68
Transurban Group	Australia	Industrial Transportation	96,090	3.79
Southern Co	USA	Electricity	83,961	3.32
American Tower Corp	USA	Real Estate Investment Trusts	79,826	3.15
Duke Energy Corp	USA	Gas Water and Multi-utilities	76,438	3.02
Enbridge	Canada	Oil Gas and Coal	66,547	2.63
Aena SME SA	Spain	Industrial Transportation	53,204	2.10
National Grid	UK	Gas Water and Multi-utilities	53,040	2.09
Union Pacific Corp	USA	Industrial Transportation	49,703	1.96
Adani Ports and Special Economic Zone	India	Industrial Transportation	49,023	1.94
Totals			751,756	29.68

ICB Subsector Breakdown - FTSE Global Core Infrastructure 50/50

		FTSE Global Core Infrastructure 50/50			FTSE Global Core Infrastructure		
ICB Code	ICB Subsector	No. of Cons	Net MCap (USDm)	Wgt %	No. of Cons	Net MCap (USDm)	Wgt %
15101010	Telecommunications Equipment	6	8,391	0.33	6	9,524	0.38
15102015	Telecommunications Services	15	37,252	1.47	15	42,283	1.69
35102025	Infrastructure REITs	5	136,428	5.39	5	154,856	6.20
50101010	Construction	1	7,599	0.30	1	2,023	0.08
50206020	Railroads	16	162,107	6.40	16	449,541	17.99
50206060	Transportation Services	71	541,449	21.38	71	144,162	5.77
60101035	Pipelines	13	318,786	12.59	13	361,846	14.48
65101010	Alternative Electricity	6	8,522	0.34	6	8,609	0.34
65101015	Conventional Electricity	69	876,863	34.62	69	885,798	35.46
65102000	Multi-utilities	13	261,033	10.31	13	263,693	10.56
65102020	Gas Distribution	34	103,712	4.10	34	104,769	4.19
65102030	Water	20	70,399	2.78	20	71,117	2.85
Totals		269	2,532,541	100.00	269	2,498,222	100.00

INFORMATION

Index Universe

FTSE Global Core Infrastructure Index and
FTSE Developed Core Infrastructure Index

Index Launch

2 March 2015

Base Date

31 December 2009

Base Value

1000

Investability Screen

Actual free float applied and liquidity
screened

Index Calculation

End-of-day

End-of-Day Distribution

Via FTP and email

Currency

USD, EUR, GBP, JPY, AUD and CAD

Review Dates

Semi-annually in March & September

History

Available from December 2005

Fundamental Research

Fundamental research on the constituents of
the FTSE Infrastructure Index Series is
provided by LPX Group.

LPX Group Website

www.lpx-group.com

ICB Subsector Breakdown - FTSE Developed Core Infrastructure 50/50

		FTSE Developed Core Infrastructure 50/50			FTSE Developed Core Infrastructure 50/50		
ICB Code	ICB Subsector	No. of Cons	Net MCap (USDm)	Wgt %	No. of Cons	Net MCap (USDm)	Wgt %
15101010	Telecommunications Equipment	4	2,452	0.11	4	2,977	0.13
15102015	Telecommunications Services	7	25,790	1.12	7	31,313	1.38
35102025	Infrastructure REITs	4	127,429	5.54	4	154,721	6.81
50206020	Railroads	10	147,261	6.40	10	443,402	19.51
50206060	Transportation Services	11	492,607	21.40	11	64,698	2.85
60101035	Pipelines	11	297,914	12.94	11	361,721	15.92
65101015	Conventional Electricity	47	803,117	34.89	47	809,616	35.63
65102000	Multi-utilities	13	264,554	11.49	13	263,693	11.61
65102020	Gas Distribution	18	80,252	3.49	18	79,991	3.52
65102030	Water	8	60,219	2.62	8	60,023	2.64
Totals		133	2,301,594	100.00	133	2,272,156	100.00

Country/Market Breakdown - FTSE Global Core Infrastructure 50/50

		FTSE Global Core Infrastructure 50/50			FTSE Global Core Infrastructure 50/50		
Country/Market		No. of Cons	Net MCap (USDm)	Wgt %	No. of Cons	Net MCap (USDm)	Wgt %
Australia		5	118,581	4.68	5	41,034	1.64
Austria		2	1,245	0.05	2	1,268	0.05
Belgium		1	3,487	0.14	1	3,522	0.14
Brazil		19	59,910	2.37	19	35,411	1.42
Canada		10	213,070	8.41	10	318,975	12.77
Chile		4	3,290	0.13	4	3,323	0.13
China		59	72,235	2.85	59	39,849	1.60
Colombia		1	1,915	0.08	1	1,934	0.08
France		4	18,927	0.75	4	12,184	0.49
Germany		2	8,492	0.34	2	2,261	0.09
Greece		4	3,745	0.15	4	3,165	0.13
Hong Kong		5	33,557	1.33	5	36,799	1.47
India		17	124,455	4.91	17	69,501	2.78
Indonesia		5	5,269	0.21	5	3,699	0.15
Italy		6	28,268	1.12	6	30,117	1.21
Japan		18	74,464	2.94	18	99,008	3.96
Korea		3	4,660	0.18	3	4,708	0.19
Malaysia		2	21,432	0.85	2	15,119	0.61
Mexico		5	63,010	2.49	5	17,641	0.71
Netherlands		1	10,124	0.40	1	2,696	0.11
New Zealand		2	23,536	0.93	2	6,681	0.27
Philippines		2	26,140	1.03	2	8,167	0.33
Portugal		1	935	0.04	1	944	0.04
Saudi Arabia		1	3,395	0.13	1	3,429	0.14
Singapore		2	4,004	0.16	2	2,436	0.10
Spain		5	82,671	3.26	5	46,344	1.86
Switzerland		1	15,711	0.62	1	4,183	0.17
Taiwan		1	704	0.03	1	1,951	0.08
Thailand		8	35,311	1.39	8	12,008	0.48
Turkiye		4	6,022	0.24	4	2,280	0.09
UAE		4	16,541	0.65	4	8,589	0.34
UK		7	86,282	3.41	7	83,778	3.35
USA		58	1,361,153	53.75	58	1,575,217	63.05
Totals		269	2,532,541	100.00	269	2,498,222	100.00

Country/Market Breakdown - FTSE Developed Core Infrastructure 50/50

Country/Market	FTSE Developed Core Infrastructure 50/50			FTSE Developed Core Infrastructure		
	No. of Cons	Net MCap (USDm)	Wgt %	No. of Cons	Net MCap (USDm)	Wgt %
Australia	5	153,953	6.69	5	41,034	1.81
Austria	2	1,255	0.05	2	1,268	0.06
Belgium	1	3,534	0.15	1	3,522	0.16
Canada	10	201,914	8.77	10	318,975	14.04
France	4	46,191	2.01	4	12,184	0.54
Germany	2	24,455	1.06	2	2,261	0.10
Hong Kong	5	33,858	1.47	5	36,799	1.62
Italy	6	27,667	1.20	6	30,117	1.33
Japan	18	74,220	3.22	18	99,008	4.36
Korea	3	4,723	0.21	3	4,708	0.21
Netherlands	1	29,156	1.27	1	2,696	0.12
New Zealand	2	66,741	2.90	2	6,681	0.29
Portugal	1	947	0.04	1	944	0.04
Singapore	2	8,464	0.37	2	2,436	0.11
Spain	5	146,416	6.36	5	46,344	2.04
Switzerland	1	45,245	1.97	1	4,183	0.18
UK	7	96,250	4.18	7	83,778	3.69
USA	58	1,336,606	58.07	58	1,575,217	69.33
Totals	133	2,301,594	100.00	133	2,272,156	100.00

Index Characteristics

Attributes	FTSE Global Core Infrastructure 50/50	FTSE Developed Core Infrastructure 50/50	FTSE Global Core Infrastructure	FTSE Developed Core Infrastructure
Number of constituents	269	133	269	133
Net MCap (USDm)	2,532,541	2,301,594	2,498,222	2,272,156
Dividend Yield %	3.78	3.90	3.66	3.68
Constituent Sizes (Net MCap USDm)				
Average	9,415	17,305	9,287	17,084
Largest	143,923	136,723	145,390	145,390
Smallest	39	78	40	95
Median	2,652	7,965	2,091	7,121
Weight of Largest Constituent (%)	5.68	5.94	5.82	6.40
Top 10 Holdings (% Index MCap)	29.68	35.94	34.83	38.29

© 2024 London Stock Exchange Group plc and its applicable group undertakings ("LSEG"). LSEG includes (1) FTSE International Limited ("FTSE"), (2) Frank Russell Company ("Russell"), (3) FTSE Global Debt Capital Markets Inc. and FTSE Global Debt Capital Markets Limited (together, "FTSE Canada"), (4) FTSE Fixed Income Europe Limited ("FTSE FI Europe"), (5) FTSE Fixed Income LLC ("FTSE FI"), (6) FTSE (Beijing) Consulting Limited ("WOFE") (7) Refinitiv Benchmark Services (UK) Limited ("RBSL"), (8) Refinitiv Limited ("RL") and (9) Beyond Ratings S.A.S. ("BR"). All rights reserved.

FTSE Russell® is a trading name of FTSE, Russell, FTSE Canada, FTSE FI, FTSE FI Europe, WOFE, RBSL, RL, and BR. "FTSE®", "Russell®", "FTSE Russell®", "FTSE4Good®", "ICB®", "Refinitiv", "Beyond Ratings®", "WMR™", "FR™" and all other trademarks and service marks used herein (whether registered or unregistered) are trademarks and/or service marks owned or licensed by the applicable member of LSEG or their respective licensors and are owned, or used under licence, by FTSE, Russell, FTSE Canada, FTSE FI, FTSE FI Europe, WOFE, RBSL, RL or BR. FTSE International Limited is authorised and regulated by the Financial Conduct Authority as a benchmark administrator. Refinitiv Benchmark Services (UK) Limited is authorised and regulated by the Financial Conduct Authority as a benchmark administrator.

All information is provided for information purposes only. All information and data contained in this publication is obtained by LSEG, from sources believed by it to be accurate and reliable. Because of the possibility of human and mechanical inaccuracy as well as other factors, however, such information and data is provided "as is" without warranty of any kind. No member of LSEG nor their respective directors, officers, employees, partners or licensors make any claim, prediction, warranty or representation whatsoever, expressly or impliedly, either as to the accuracy, timeliness, completeness, merchantability of any information or LSEG Products, or of results to be obtained from the use of LSEG products, including but not limited to indices, rates, data and analytics, or the fitness or suitability of the LSEG products for any particular purpose to which they might be put. The user of the information assumes the entire risk of any use it may make or permit to be made of the information.

No responsibility or liability can be accepted by any member of LSEG nor their respective directors, officers, employees, partners or licensors for (a) any loss or damage in whole or in part caused by, resulting from, or relating to any inaccuracy (negligent or otherwise) or other circumstance involved in procuring, collecting, compiling, interpreting, analysing, editing, transcribing, transmitting, communicating or delivering any such information or data or from use of this document or links to this document or (b) any direct, indirect, special, consequential or incidental damages whatsoever, even if any member of LSEG is advised in advance of the possibility of such damages, resulting from the use of, or inability to use, such information.

No member of LSEG nor their respective directors, officers, employees, partners or licensors provide investment advice and nothing in this document should be taken as constituting financial or investment advice. No member of LSEG nor their respective directors, officers, employees, partners or licensors make any representation regarding the advisability of investing in any asset or whether such investment creates any legal or compliance risks for the investor. A decision to invest in any such asset should not be made in reliance on any information herein. Indices and rates cannot be invested in directly. Inclusion of an asset in an index or rate is not a recommendation to buy, sell or hold that asset nor confirmation that any particular investor may lawfully buy, sell or hold the asset or an index or rate containing the asset. The general information contained in this publication should not be acted upon without obtaining specific legal, tax, and investment advice from a licensed professional.

Past performance is no guarantee of future results. Charts and graphs are provided for illustrative purposes only. Index and/or rate returns shown may not represent the results of the actual trading of investable assets. Certain returns shown may reflect back-tested performance. All performance presented prior to the index or rate inception date is back-tested performance. Back-tested performance is not actual performance, but is hypothetical. The back-test calculations are based on the same methodology that was in effect when the index or rate was officially launched. However, back-tested data may reflect the application of the index or rate methodology with the benefit of hindsight, and the historic calculations of an index or rate may change from month to month based on revisions to the underlying economic data used in the calculation of the index or rate.

No part of this information may be reproduced, stored in a retrieval system or transmitted in any form or by any means, electronic, mechanical, photocopying, recording or otherwise, without prior written permission of the applicable member of LSEG. Use and distribution of LSEG data requires a licence from LSEG and/or its licensors.

Data definitions available from
info@ftserussell.com

To learn more, visit lseg.com/ftse-russell;
email info@ftserussell.com; or
call your regional Client Services Team office:

EMEA

+44 (0) 20 7866 1810

North America

+1 877 503 6437

Asia-Pacific

Hong Kong +852 2164 3333
Tokyo +81 3 6441 1430
Sydney +61 (0) 2 7228 5659