



FTSE Multi-Asset Composite Index Series

FTSE China A All Cap + FTSE Chinese (Onshore CNY) Broad Bond Indices

Multi-Asset | Single Currency

The FTSE Multi-Asset Composite Index Series is designed to measure cross-asset market returns for a range of regions and risk exposures. Each index is constructed as an index-level composite of at least one broad-market equity and one fixed income index. Some indices also include a cash component. Each family within the series includes a selection of weighting ratios to proxy a range of asset class allocations.

Each series is produced in four weightings as standard: 80/20, 60/40, 50/50, 30/70 (Equity % / Fixed Income %). Versions inclusive of cash are also available, with cash weighted at 2% as standard. Composite index weightings are reset monthly, whilst underlying indices retain their respective rebalance schedules. Reporting is across four major currencies (USD, EUR, GBP, JPY). These indices are fully customisable on request.

Underlying Indices

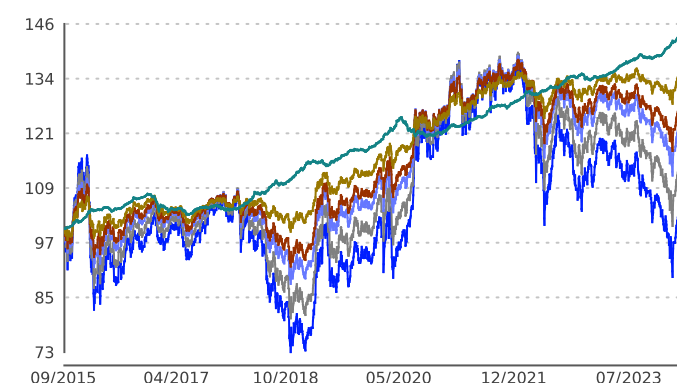
The FTSE China A All Cap Index Series is designed to represent the performance of the China A Shares that are available to international and domestic Chinese investors.

The FTSE Chinese (Onshore CNY) Broad Bond Index (CNYBBI) measures the performance of the onshore Chinese yuan-denominated fixed-rate governments, agencies, and corporations debt issued in mainland China. The CNYBBI provides a comprehensive measure of the Chinese onshore market by expanding coverage of government and policy banks issues to other governments, agencies, regional governments, and corporations. Sub-indices are available in any combinations of asset class and maturity.

Please refer to individual factsheets for the FTSE China A All Cap Index and FTSE Chinese (Onshore CNY) Broad Bond Index design criteria. These can be found at lseg.com.

PERFORMANCE STATISTICS

HISTORICAL INDEX LEVEL (Unhedged, in CNY)

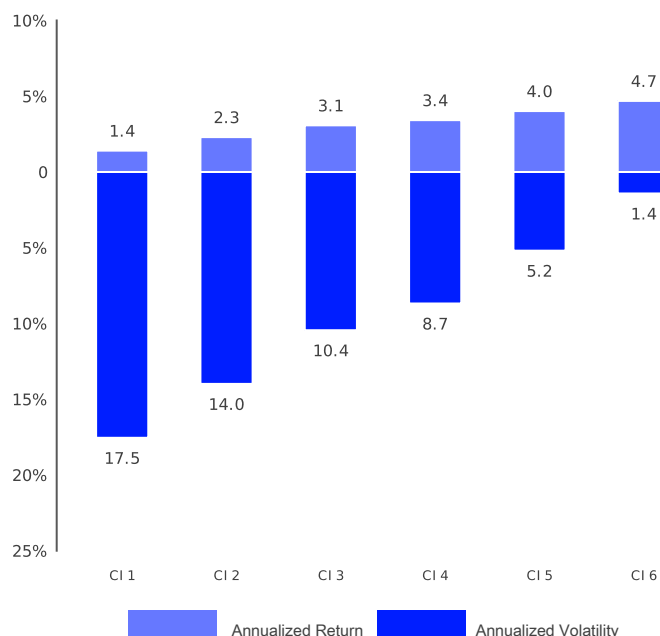


- 100% FTSE China A All Cap (CI 1)
- 80% FTSE China A All Cap + 20% FTSE CNYBBI (CI 2)
- 60% FTSE China A All Cap + 40% FTSE CNYBBI (CI 3)
- 50% FTSE China A All Cap + 50% FTSE CNYBBI (CI 4)
- 30% FTSE China A All Cap + 70% FTSE CNYBBI (CI 5)
- 100% FTSE CNYBBI (CI 6)

Returns vs Volatilities*

FTSE China A All Cap	100%	80%	60%	50%	30%	0%
FTSE CNYBBI	0%	20%	40%	50%	70%	100%
Returns / Volatilities*	0.08	0.16	0.29	0.39	0.77	3.31

* Annualized over 5 Years



ANNUALIZED RETURNS AND RISKS* (in %)

FTSE China A All Cap		FTSE China A All Cap + FTSE CNYBBI				FTSE CNYBBI
100%		80% FTSE China A All Cap + 20% FTSE CNYBBI	60% FTSE China A All Cap + 40% FTSE CNYBBI	50% FTSE China A All Cap + 50% FTSE CNYBBI	30% FTSE China A All Cap + 70% FTSE CNYBBI	100%
Returns						
1 Year	-12.30	-8.67	-5.02	-3.18	0.49	6.02
3 Years	-9.73	-6.68	-3.66	-2.16	0.81	5.16
5 Years	1.41	2.30	3.08	3.42	4.02	4.69
Inception	-0.13	1.07	2.12	2.59	3.41	4.35
Volatilities						
1 Year	15.31	12.14	8.99	7.43	4.36	1.17
3 Years	16.28	12.94	9.64	8.01	4.79	1.20
5 Years	17.55	13.99	10.45	8.68	5.19	1.42
Inception	19.27	15.36	11.48	9.56	5.76	1.52

* Unhedged in CNY

CORRELATIONS (in %)

	1 Month	6 Months	1 Year	3 Years	5 Years
FTSE China A All Cap and FTSE CNYBBI	-0.34	-0.35	-0.30	-0.13	-0.16

Compound annual returns (unhedged in CNY) measured over time period shown. Annualized volatility data based on daily return data over stated period; annualized using 252 trading-day year.

ACCESS TO INDEXES

BLOOMBERG

AWL6WGB4	60% FTSE All-World + 40% FTSE WGBI, in USD	AWE6EMG4	60% FTSE Emerging + 40% FTSE EMGBI, in USD
GAC6WBG4	60% FTSE Global All Cap + 40% FTSE WorldBIG, in USD	AWE6EGU4	60% FTSE Emerging + 40% FTSE EMUSDGBI, in USD
AWL6EBG4	60% FTSE All World + 40% EuroBIG, in EUR	EZN6EBG4	60% FTSE Eurozone + 40% FTSE EuroBIG, in EUR
AWL6UBG4	60% FTSE All World + 40% FTSE USBIG, in USD	EZN6EGB4	60% FTSE Eurozone + 40% FTSE EGBI, in EUR
RU16UBG4	60% Russell 1000 + 40% FTSE USBIG, in USD	CN56CGB4	60% FTSE China A50 + 40% FTSE CNGBI, in CNY
R1V6UBG4	60% Russell 1000 Value + 40% FTSE USBIG, in USD	CNA6CGP4	60% FTSE China A + 40% FTSE CNGPBI, in CNY
RU16UST4	60% Russell 1000 + 40% FTSE US Treasury, in USD	CAC6CBB4	60% FTSE China A All Cap + 40% FTSE CNYBBI, in CNY
RU36UBG4	60% Russell 3000 + 40% FTSE USBIG, in USD		

© 2024 London Stock Exchange Group plc and its applicable group undertakings (the "LSE Group"). The LSE Group includes (1) FTSE International Limited ("FTSE"), (2) Frank Russell Company ("Russell"), (3) FTSE Global Debt Capital Markets Inc. and FTSE Global Debt Capital Markets Limited (together, "FTSE Canada"), (4) MTSNext Limited ("MTSNext"), (5) Mergent, Inc. ("Mergent"), (6) FTSE Fixed Income LLC ("FTSE FI"), (7) The Yield Book Inc. ("YB"), and (8) Beyond Ratings S.A.S. ("BR"). All rights reserved.

The FTSE Fixed Income Indices are calculated by or on behalf of FTSE Fixed Income LLC or its affiliate, agent or partner. FTSE International Limited is authorized and regulated by the Financial Conduct Authority as a benchmark administrator.

FTSE Russell® is a trading name of FTSE, Russell, FTSE Canada, MTSNext, Mergent, FTSE FI, YB, and BR. "FTSE®", "Russell®", "FTSE Russell®", "MTS®", "FTSE4Good®", "ICB®", "Mergent®", "WorldBIG®", "USBIG®", "EuroBIG®", "AusBIG®", "The Yield Book®", Beyond Ratings®, and all other trademarks and service marks used herein (whether registered or unregistered) are trademarks and/or service marks owned or licensed by the applicable member of the LSE Group or their respective licensors and are owned, or used under license, by FTSE, Russell, MTSNext, FTSE Canada, Mergent, FTSE FI, YB, or BR.

All information is provided for information purposes only. All information and data contained in this publication is obtained by the LSE Group, from sources believed by it to be accurate and reliable. Because of the possibility of human and mechanical error as well as other factors, however, such information and data is provided "as is" without warranty of any kind. No member of the LSE Group nor their respective directors, officers, employees, partners or licensors make any claim, prediction, warranty or representation whatsoever, expressly or impliedly, either as to the accuracy, timeliness, completeness, merchantability of any information or of results to be obtained from the use of the FTSE Russell Indices or the fitness or suitability of the FTSE Russell Indices for any particular purpose to which they might be put. Any representation of historical data accessible through FTSE Russell Indices is provided for information purposes only and is not a reliable indicator of future performance.

No responsibility or liability can be accepted by any member of the LSE Group nor their respective directors, officers, employees, partners or licensors for (a) any loss or damage in whole or in part caused by, resulting from, or relating to any error (negligent or otherwise) or other circumstance involved in procuring, collecting, compiling, interpreting, analyzing, editing, transcribing, transmitting, communicating or delivering any such information or data or from use of this document or links to this document or (b) any direct, indirect, special, consequential or incidental damages whatsoever, even if any member of the LSE Group is advised in advance of the possibility of such damages, resulting from the use of, or inability to use, such information.

No member of the LSE Group nor their respective directors, officers, employees, partners or licensors provide investment advice and nothing contained in this document or accessible through FTSE Russell Indices, including statistical data and industry reports, should be taken as constituting financial or investment advice or a financial promotion.

Past performance is no guarantee of future results. Charts and graphs are provided for illustrative purposes only. Index returns shown may not represent the results of the actual trading of investable assets. Certain returns shown may reflect back-tested performance. All performance presented prior to the index inception date is back-tested performance. Back-tested performance is not actual performance, but is hypothetical. The back-test calculations are based on the same methodology that was in effect when the index was officially launched. However, back-tested data may reflect the application of the index methodology with the benefit of hindsight, and the historic calculations of an index may change from month to month based on revisions to the underlying economic data used in the calculation of the index.

No part of this information may be reproduced, stored in a retrieval system or transmitted in any form or by any means, electronic, mechanical, photocopying, recording or otherwise, without prior written permission of the applicable member of the LSE Group. Use and distribution of the LSE Group data requires a license from FTSE, Russell, FTSE Canada, MTSNext, Mergent, FTSE FI, YB, BR, and/or their respective licensors.