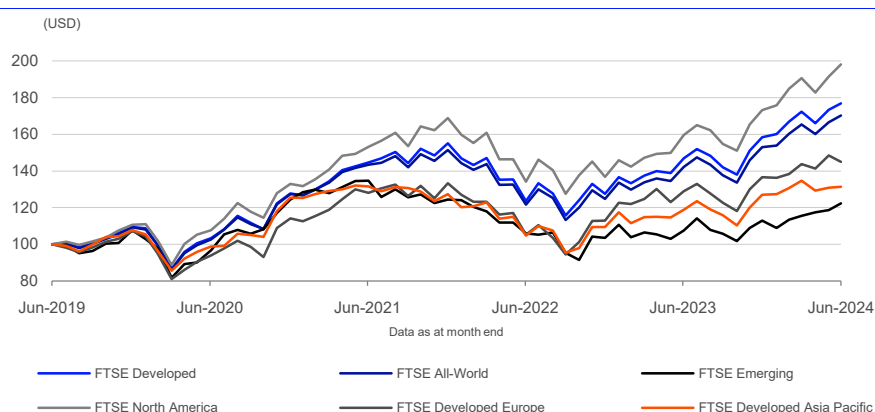


# FTSE Developed Index

Data as at: 28 June 2024

The FTSE Developed Index is a market-capitalization weighted index representing the performance of large and mid cap companies in Developed markets. The index is derived from the FTSE Global Equity Index Series (GEIS), which covers 98% of the world's investable market capitalization.

## 5-Year Performance - Total Return



## Performance and Volatility - Total Return

Index (USD)	Return %						Return pa %*		Volatility %**		
	3M	6M	YTD	12M	3YR	5YR	3YR	5YR	1YR	3YR	5YR
FTSE Developed	2.6	11.6	11.6	20.4	22.4	76.9	7.0	12.1	9.7	15.9	17.8
FTSE All-World	2.9	11.3	11.3	19.7	18.7	70.2	5.9	11.2	9.4	15.4	17.4
FTSE Emerging	5.8	8.4	8.4	13.9	-9.1	22.4	-3.1	4.1	11.7	15.7	17.9
FTSE North America	3.9	14.4	14.4	24.0	29.3	98.1	8.9	14.6	11.0	17.4	18.4
FTSE Developed Europe	0.8	6.2	6.2	12.5	13.2	45.0	4.2	7.7	13.2	17.6	19.4
FTSE Developed Asia Pacific	-2.4	3.4	3.4	10.6	-0.1	31.5	0.0	5.6	13.7	15.5	16.9

\* Compound annual returns measured over 3 and 5 years respectively

\*\* Volatility – 1YR based on 12 months daily data. 3YR based on weekly data (Wednesday to Wednesday). 5YR based on monthly data

## Year-on-Year Performance - Total Return

Index % (USD)	2014	2015	2016	2017	2018	2019	2020	2021	2022	2023
FTSE Developed	5.1	-0.3	8.2	23.9	-8.6	28.0	16.7	21.4	-17.8	24.2
FTSE All-World	4.8	-1.7	8.6	24.6	-9.1	27.2	16.6	18.9	-17.7	22.6
FTSE Emerging	1.6	-15.2	13.5	32.5	-13.0	20.6	15.5	0.1	-16.9	9.1
FTSE North America	12.6	-0.4	12.4	21.8	-5.1	31.5	20.2	27.0	-19.0	26.6
FTSE Developed Europe	-5.6	-1.9	0.1	26.5	-14.5	24.6	6.6	16.7	-15.3	21.0
FTSE Developed Asia Pacific	-3.2	2.8	5.2	28.3	-13.4	18.6	16.4	1.5	-14.2	16.2

## FEATURES

### Coverage

Derived from the FTSE Global Equity Index Series (GEIS), which covers 98% of the world's investable market capitalisation.

### Objective

The index is designed for use in the creation of index tracking funds, derivatives and as a performance benchmark.

### Investability

Stocks are selected and weighted to ensure that the index is investable.

### Liquidity

Stocks are screened to ensure that the index is tradable.

### Transparency

Index methodologies are freely available on the FTSE Russell website.

### Availability

The index is calculated based on price and total return methodologies, both real time and end of day.

### Industry Classification Benchmark (ICB)

Index constituents are categorized in accordance with the Industry Classification Benchmark (ICB), the global standard for industry sector analysis.

Top 10 Constituents

Constituent	Country/Market	ICB Sector	Net MCap (USDm)	Wgt %
Microsoft Corp	USA	Software and Computer Services	3,319,306	4.93
Apple Inc.	USA	Technology Hardware and Equipment	3,057,501	4.54
Nvidia	USA	Technology Hardware and Equipment	2,933,973	4.35
Amazon.Com	USA	Retailers	1,792,735	2.66
Meta Platforms Inc	USA	Software and Computer Services	1,103,247	1.64
Alphabet Class A	USA	Software and Computer Services	1,069,164	1.59
Alphabet Class C	USA	Software and Computer Services	902,157	1.34
Lilly (Eli) & Co	USA	Pharmaceuticals and Biotechnology	769,068	1.14
Broadcom	USA	Technology Hardware and Equipment	729,030	1.08
JPMorgan Chase & Co	USA	Banks	578,877	0.86
Totals			16,255,059	24.12

ICB Supersector Breakdown

		FTSE Developed			FTSE All-World		
ICB Code	ICB Supersector	No. of Cons	Net MCap (USDm)	Wgt %	No. of Cons	Net MCap (USDm)	Wgt %
1010	Technology	191	19,545,162	29.00	421	21,515,635	28.81
1510	Telecommunications	56	1,781,291	2.64	130	2,063,975	2.76
2010	Health Care	172	7,670,583	11.38	350	7,905,328	10.58
3010	Banks	107	3,904,693	5.79	273	5,151,333	6.90
3020	Financial Services	97	3,048,160	4.52	213	3,258,416	4.36
3030	Insurance	84	2,048,415	3.04	128	2,241,245	3.00
3510	Real Estate	140	1,490,131	2.21	240	1,640,273	2.20
4010	Automobiles and Parts	64	1,536,731	2.28	133	1,735,583	2.32
4020	Consumer Products and Services	103	1,751,042	2.60	186	1,939,941	2.60
4030	Media	39	898,267	1.33	69	921,841	1.23
4040	Retailers	61	3,793,664	5.63	112	4,072,297	5.45
4050	Travel and Leisure	78	1,168,361	1.73	121	1,279,795	1.71
4510	Food Beverage and Tobacco	102	2,108,240	3.13	216	2,367,708	3.17
4520	Personal Care Drug and Grocery Stores	57	1,316,164	1.95	108	1,450,551	1.94
5010	Construction and Materials	67	791,510	1.17	155	945,972	1.27
5020	Industrial Goods and Services	350	7,925,361	11.76	633	8,380,630	11.22
5510	Basic Resources	64	1,006,594	1.49	203	1,317,961	1.76
5520	Chemicals	75	943,093	1.40	184	1,075,790	1.44
6010	Energy	71	2,853,864	4.23	183	3,335,095	4.47
6510	Utilities	94	1,806,437	2.68	233	2,088,756	2.80
Totals		2072	67,387,760	100.00	4291	74,688,125	100.00

Index Characteristics

Attributes	FTSE Developed	FTSE All-World
Number of constituents	2072	4291
Net MCap (USDm)	67,387,760	74,688,125
Dividend Yield %	1.80	1.90
Constituent Sizes (Net MCap USDm)		
Average	32,523	17,406
Largest	3,319,306	3,319,306
Smallest	149	17
Median	7,744	2,503
Weight of Largest Constituent (%)	4.93	4.44
Top 10 Holdings (% Index MCap)	24.12	21.95

INFORMATION

Index Universe

FTSE Global Equity Index Series

Index Launch

30 June 2000

Base Date

31 May 2000

Base Value

200

Investability Screen

Actual free float applied and liquidity screened

Index Calculation

Real-time and end-of-day index available

End-of-Day Distribution

Via FTP and email

Currency

USD, GBP, JPY, EUR, Local

Review Dates

Semi-annually in March and September

## Country/Market Breakdown

Country/Market	No. of Cons	Net MCap (USDm)	Wgt %
Australia	105	1,377,943	2.04
Austria	7	36,023	0.05
Belgium	14	159,406	0.24
Canada	48	1,704,767	2.53
Denmark	18	626,044	0.93
Finland	14	171,867	0.26
France	69	1,818,408	2.70
Germany	70	1,436,729	2.13
Hong Kong	72	355,058	0.53
Ireland	5	47,044	0.07
Israel	30	108,141	0.16
Italy	34	482,643	0.72
Japan	502	4,385,941	6.51
Korea	160	944,542	1.40
Netherlands	31	878,336	1.30
New Zealand	15	53,539	0.08
Norway	17	111,586	0.17
Poland	10	61,904	0.09
Portugal	4	30,127	0.04
Singapore	36	227,003	0.34
Spain	25	459,255	0.68
Sweden	52	564,195	0.84
Switzerland	52	1,616,090	2.40
UK	103	2,657,952	3.94
USA	579	47,073,217	69.85
<b>Totals</b>	<b>2072</b>	<b>67,387,760</b>	<b>100.00</b>

© 2024 London Stock Exchange Group plc and its applicable group undertakings ("LSEG"). LSEG includes (1) FTSE International Limited ("FTSE"), (2) Frank Russell Company ("Russell"), (3) FTSE Global Debt Capital Markets Inc. and FTSE Global Debt Capital Markets Limited (together, "FTSE Canada"), (4) FTSE Fixed Income Europe Limited ("FTSE FI Europe"), (5) FTSE Fixed Income LLC ("FTSE FI"), (6) FTSE (Beijing) Consulting Limited ("WOFE") (7) Refinitiv Benchmark Services (UK) Limited ("RBSL"), (8) Refinitiv Limited ("RL") and (9) Beyond Ratings S.A.S. ("BR"). All rights reserved.

FTSE Russell® is a trading name of FTSE, Russell, FTSE Canada, FTSE FI, FTSE FI Europe, WOFE, RBSL, RL, and BR. "FTSE®", "Russell®", "FTSE Russell®", "FTSE4Good®", "ICB®", "Refinitiv", "Beyond Ratings®", "WMR™", "FR™" and all other trademarks and service marks used herein (whether registered or unregistered) are trademarks and/or service marks owned or licensed by the applicable member of LSEG or their respective licensors and are owned, or used under licence, by FTSE, Russell, FTSE Canada, FTSE FI, FTSE FI Europe, WOFE, RBSL, RL or BR. FTSE International Limited is authorised and regulated by the Financial Conduct Authority as a benchmark administrator. Refinitiv Benchmark Services (UK) Limited is authorised and regulated by the Financial Conduct Authority as a benchmark administrator.

All information is provided for information purposes only. All information and data contained in this publication is obtained by LSEG, from sources believed by it to be accurate and reliable. Because of the possibility of human and mechanical inaccuracy as well as other factors, however, such information and data is provided "as is" without warranty of any kind. No member of LSEG nor their respective directors, officers, employees, partners or licensors make any claim, prediction, warranty or representation whatsoever, expressly or impliedly, either as to the accuracy, timeliness, completeness, merchantability of any information or LSEG Products, or of results to be obtained from the use of LSEG products, including but not limited to indices, rates, data and analytics, or the fitness or suitability of the LSEG products for any particular purpose to which they might be put. The user of the information assumes the entire risk of any use it may make or permit to be made of the information.

No responsibility or liability can be accepted by any member of LSEG nor their respective directors, officers, employees, partners or licensors for (a) any loss or damage in whole or in part caused by, resulting from, or relating to any inaccuracy (negligent or otherwise) or other circumstance involved in procuring, collecting, compiling, interpreting, analysing, editing, transcribing, transmitting, communicating or delivering any such information or data or from use of this document or links to this document or (b) any direct, indirect, special, consequential or incidental damages whatsoever, even if any member of LSEG is advised in advance of the possibility of such damages, resulting from the use of, or inability to use, such information.

No member of LSEG nor their respective directors, officers, employees, partners or licensors provide investment advice and nothing in this document should be taken as constituting financial or investment advice. No member of LSEG nor their respective directors, officers, employees, partners or licensors make any representation regarding the advisability of investing in any asset or whether such investment creates any legal or compliance risks for the investor. A decision to invest in any such asset should not be made in reliance on any information herein. Indices and rates cannot be invested in directly. Inclusion of an asset in an index or rate is not a recommendation to buy, sell or hold that asset nor confirmation that any particular investor may lawfully buy, sell or hold the asset or an index or rate containing the asset. The general information contained in this publication should not be acted upon without obtaining specific legal, tax, and investment advice from a licensed professional.

Past performance is no guarantee of future results. Charts and graphs are provided for illustrative purposes only. Index and/or rate returns shown may not represent the results of the actual trading of investable assets. Certain returns shown may reflect back-tested performance. All performance presented prior to the index or rate inception date is back-tested performance. Back-tested performance is not actual performance, but is hypothetical. The back-test calculations are based on the same methodology that was in effect when the index or rate was officially launched. However, back-tested data may reflect the application of the index or rate methodology with the benefit of hindsight, and the historic calculations of an index or rate may change from month to month based on revisions to the underlying economic data used in the calculation of the index or rate.

No part of this information may be reproduced, stored in a retrieval system or transmitted in any form or by any means, electronic, mechanical, photocopying, recording or otherwise, without prior written permission of the applicable member of LSEG. Use and distribution of LSEG data requires a licence from LSEG and/or its licensors.

Data definitions available from  
[info@ftserussell.com](mailto:info@ftserussell.com)

To learn more, visit [lseg.com/ftse-russell](https://lseg.com/ftse-russell);  
email [info@ftserussell.com](mailto:info@ftserussell.com); or  
call your regional Client Services Team office:

**EMEA**

+44 (0) 20 7866 1810

**North America**

+1 877 503 6437

**Asia-Pacific**

Hong Kong +852 2164 3333  
Tokyo +81 3 6441 1430  
Sydney +61 (0) 2 7228 5659