

# FTSE MIB Implied Volatility Index

aggiornamento: 30 Dicembre 2024

L'indice FTSE MIB Implied Volatility (IVI) è un indice di volatilità che – facendo riferimento al valore implicito nei prezzi delle opzioni su indice – misura la volatilità dell'indice FTSE MIB.

Sono calcolate e diffuse le versioni (con dati annualizzati) a 30, 60, 90 e 180 giorni.

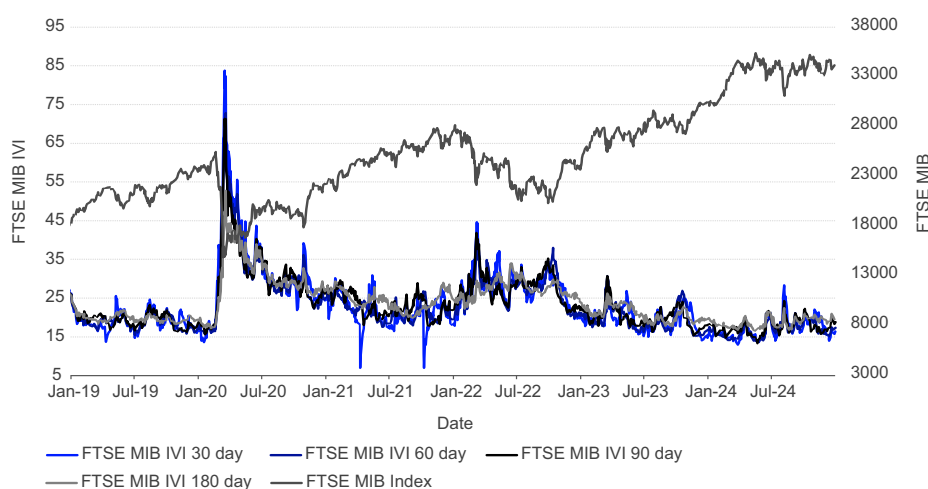
La volatilità attesa è calcolata partendo dai prezzi delle opzioni outofthe money disponibili sull'IDEM, che incorporano le previsioni sull'evoluzione futura della volatilità.

Index tickers are: IVMIB30, IVMIB60, IVMIB90, IVMIB180

## FTSE MIB IVI - Volatilità implicita

Anno	volatilità a 30 giorni			volatilità a 60 giorni			volatilità a 90 giorni			volatilità a 180 giorni		
	media	max	min	media	max	min	media	max	min	media	max	min
1Y	17.05	28.28	13.05	16.77	23.90	13.67	17.54	24.29	13.42	18.66	22.44	16.52
2023	19.56	30.62	13.81	19.21	26.94	14.94	20.07	30.71	15.39	20.88	26.16	17.70
2022	28.00	44.58	17.93	27.31	38.32	19.48	27.77	41.87	21.02	27.39	33.93	22.34
2021	21.37	30.93	7.05	21.77	28.83	17.66	22.96	29.61	17.43	24.20	29.44	19.93
2020	32.46	83.76	13.71	30.80	72.81	15.89	30.84	71.35	15.70	30.02	52.67	17.20
2019	19.04	26.17	13.37	18.90	25.93	15.50	19.41	26.04	16.25	19.89	25.63	18.11
Since 4/2010	25.77	83.76	7.05	25.38	72.81	13.46	25.75	71.35	15.20	26.04	52.67	17.20

## FTSE MIB IVI - Volatilità implicita



## CARATTERISTICHE

### Obiettivo

- L'indice fornisce una stima delle aspettative espresse dal mercato sulla volatilità dell'indice sottostante, riferite al periodo tra il momento attuale e la scadenza delle opzioni, consentendo agli investitori di effettuare decisioni di risk management e trading meglio informate.

### Idoneità

- L'indice è calcolato sulla base delle opzioni out-of-the-money put e call delle due scadenze a cavallo del periodo di interesse (30, 60, 90, 180 giorni).
- Il prezzo delle opzioni incorpora le aspettative del mercato sulla volatilità futura.

### Trasparenza

- Gli indici sono gestiti in base a regole trasparenti e disponibili al pubblico.

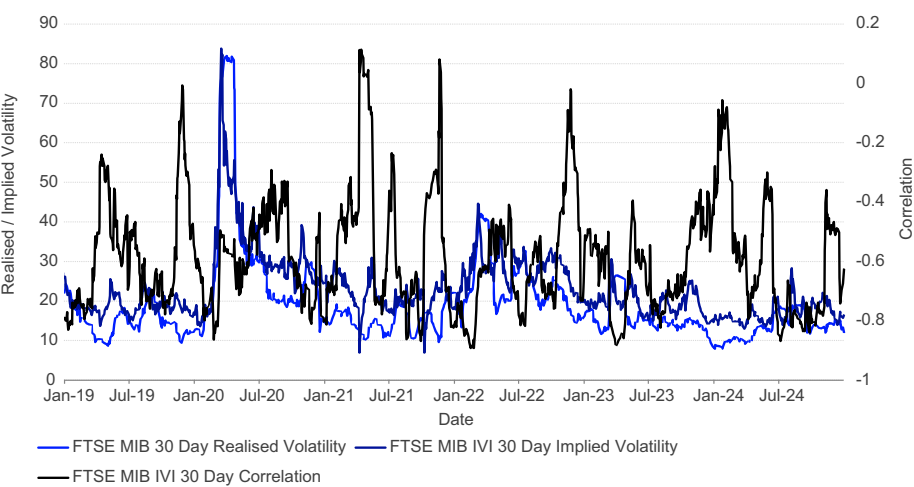
Correlazione tra FTSE MIB e FTSE MIB IVI

Anno	correlazione 30 giorni			correlazione 90 giorni		
	media	max	min	media	max	min
1Y	-0.60	-0.06	-0.87	-0.63	-0.42	-0.79
2023	-0.63	-0.36	-0.88	-0.63	-0.45	-0.77
2022	-0.61	-0.02	-0.90	-0.54	-0.43	-0.70
2021	-0.51	0.11	-0.87	-0.63	-0.42	-0.82
2020	-0.59	-0.29	-0.86	-0.60	-0.48	-0.79
2019	-0.58	-0.01	-0.83	-0.67	-0.59	-0.76
Since 4/2010	-0.55	0.11	-0.92	-0.58	-0.29	-0.82

FTSE MIB: volatilità implicità (IVI) ed effettiva (EFF)

Anno	volatilità a 30 giorni		volatilità a 90 giorni	
	IVI	EFF	IVI	EFF
1Y	17.05	13.47	17.54	13.52
2023	19.56	15.68	20.07	16.60
2022	28.00	23.83	27.77	24.45
2021	21.37	15.15	22.96	16.17
2020	32.46	30.40	30.84	31.89
2019	19.04	15.10	19.41	16.27
Since 4/2010	25.77	22.56	23.19	23.14

FTSE MIB: volatilità implicità ed effettiva



© 2024 London Stock Exchange Group plc and its applicable group undertakings ("LSEG"). LSEG includes (1) FTSE International Limited ("FTSE"), (2) Frank Russell Company ("Russell"), (3) FTSE Global Debt Capital Markets Inc. and FTSE Global Debt Capital Markets Limited (together, "FTSE Canada"), (4) FTSE Fixed Income Europe Limited ("FTSE FI Europe"), (5) FTSE Fixed Income LLC ("FTSE FI"), (6) FTSE (Beijing) Consulting Limited ("WOFE") (7) Refinitiv Benchmark Services (UK) Limited ("RBSL"), (8) Refinitiv Limited ("RL") and (9) Beyond Ratings S.A.S. ("BR"). All rights reserved.

FTSE Russell® is a trading name of FTSE, Russell, FTSE Canada, FTSE FI, FTSE FI Europe, WOFE, RBSL, RL, and BR. "FTSE®", "Russell®", "FTSE Russell®", "FTSE4Good®", "ICB®", "Refinitiv", "Beyond Ratings®", "WMR™", "FR™" and all other trademarks and service marks used herein (whether registered or unregistered) are trademarks and/or service marks owned or licensed by the applicable member of LSEG or their respective licensors and are owned, or used under licence, by FTSE, Russell, FTSE Canada, FTSE FI, FTSE FI Europe, WOFE, RBSL, RL or BR. FTSE International Limited is authorised and regulated by the Financial Conduct Authority as a benchmark administrator. Refinitiv Benchmark Services (UK) Limited is authorised and regulated by the Financial Conduct Authority as a benchmark administrator.

All information is provided for information purposes only. All information and data contained in this publication is obtained by LSEG, from sources believed by it to be accurate and reliable. Because of the possibility of human and mechanical inaccuracy as well as other factors, however, such information and data is provided "as is" without warranty of any kind. No member of LSEG nor their respective directors, officers, employees, partners or licensors make any claim, prediction, warranty or representation whatsoever, expressly or impliedly, either as to the accuracy, timeliness, completeness, merchantability of any information or LSEG Products, or of results to be obtained from the use of LSEG products, including but not limited to indices, rates, data and analytics, or the fitness or suitability of the LSEG products for any particular purpose to which they might be put. The user of the information assumes the entire risk of any use it may make or permit to be made of the information.

No responsibility or liability can be accepted by any member of LSEG nor their respective directors, officers, employees, partners or licensors for (a) any loss or damage in whole or in part caused by, resulting from, or relating to any inaccuracy (negligent or otherwise) or other circumstance involved in procuring, collecting, compiling, interpreting, analysing, editing, transcribing, transmitting, communicating or delivering any such information or data or from use of this document or links to this document or (b) any direct, indirect, special, consequential or incidental damages whatsoever, even if any member of LSEG is advised in advance of the possibility of such damages, resulting from the use of, or inability to use, such information.

No member of LSEG nor their respective directors, officers, employees, partners or licensors provide investment advice and nothing in this document should be taken as constituting financial or investment advice. No member of LSEG nor their respective directors, officers, employees, partners or licensors make any representation regarding the advisability of investing in any asset or whether such investment creates any legal or compliance risks for the investor. A decision to invest in any such asset should not be made in reliance on any information herein. Indices and rates cannot be invested in directly. Inclusion of an asset in an index or rate is not a recommendation to buy, sell or hold that asset nor confirmation that any particular investor may lawfully buy, sell or hold the asset or an index or rate containing the asset. The general information contained in this publication should not be acted upon without obtaining specific legal, tax, and investment advice from a licensed professional.

Past performance is no guarantee of future results. Charts and graphs are provided for illustrative purposes only. Index and/or rate returns shown may not represent the results of the actual trading of investable assets. Certain returns shown may reflect back-tested performance. All performance presented prior to the index or rate inception date is back-tested performance. Back-tested performance is not actual performance, but is hypothetical. The back-test calculations are based on the same methodology that was in effect when the index or rate was officially launched. However, back-tested data may reflect the application of the index or rate methodology with the benefit of hindsight, and the historic calculations of an index or rate may change from month to month based on revisions to the underlying economic data used in the calculation of the index or rate.

INFORMAZIONI

Lancio dell'indice

18 febbraio 2013

Frequenza di calcolo dell'indice

A fine giornata

Dati storici

Dal 1° aprile 2010

Regole dell'indice

www.ftserussell.com

Tickers

IVMIB30

IVMIB60

IVMIB90

IVMIB180

Definizioni disponibili su [info@ftserussell.com](mailto:info@ftserussell.com)

Per maggiori informazioni visitate [lseg.com/ftse-russell](https://lseg.com/ftse-russell), scrivete a [info@ftserussell.com](mailto:info@ftserussell.com) o contattate il vostro ufficio locale di FTSE:

EMEA

+44 (0) 20 7866 1810

North America

+1 877 503 6437

Asia-Pacific

Hong Kong

+852 2164 3333

Tokyo

+81 3 3581 2764

Sydney

+61 (0) 2 8823 3521