

# FTSE Private Investor Index Series

Data as at: 30 April 2025

The FTSE Private Investor Index Series is a multi-asset index series providing market participants in the UK with a set of asset allocation benchmarks covering equities, fixed income, cash, property and other investments. The indexes are calculated by blending underlying component indexes representing the performance of various asset classes, with the asset allocation weights derived from asset allocation levels of eligible funds reported in the Morningstar Fund Database.

## The index series comprises 7 indexes:

- FTSE UK Private Investor Ultra Conservative Index, designed to represent the performance of a predominantly fixed income benchmark.
- FTSE UK Private Investor Conservative Index, designed to represent the performance of a multi-asset benchmark with a low level of historical volatility.
- FTSE UK Private Investor Income Index, designed to represent the performance of a multi-asset benchmark with lower than average levels of historical volatility.
- FTSE UK Private Investor Balanced Index, designed to represent the performance of a multi-asset benchmark with higher than average levels of historical volatility.
- FTSE UK Private Investor Growth Index, designed to represent the performance of a multi-asset benchmark with high historical levels of volatility.
- FTSE UK Private Investor Ultra Growth Index, designed to represent the performance of a predominantly equity benchmark.
- FTSE UK Private Investor Global Growth Index, designed to reflect a pure equity benchmark encompassing both Developed and Emerging Market equities.

## Asset Classes and Component Indexes

Global Equities - FTSE All-World Index  
 UK Equities - FTSE All-Share Index  
 Global ex UK Equities - FTSE All-World ex UK Index  
 UK Government Bonds - FTSE Actuaries UK Conventional Gilts up to 15 Years Index  
 Global Government Bonds - FTSE WGBI-DM Hedged into Sterling  
 Sterling Corporate Bonds - FTSE WorldBIG® GBP Corporate Index  
 Global ex UK Government Bonds - FTSE WGBI-DM ex-UK Hedged into Sterling  
 Commercial Property - FTSE 350 Real Estate Index  
 Developed Market Equities - FTSE Developed Index  
 Emerging Market Equities - FTSE Emerging Index  
 Cash - SONIA\*  
 Other Investments - SONIA\* (For calculating Benchmark indexes, 2% will be added to this rate.)

\* Sterling Overnight Index Average

## FEATURES

### Objective

The index series is designed for use in the creation of index tracking funds and as a performance benchmark.

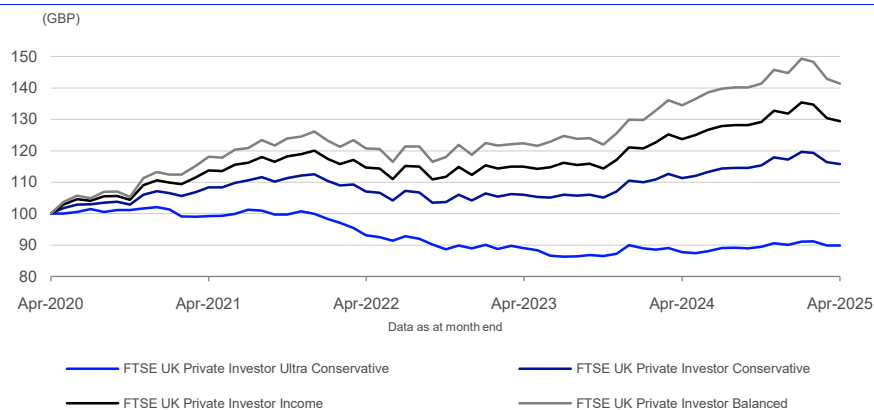
### Availability

Capital and total return versions are available for the index series.

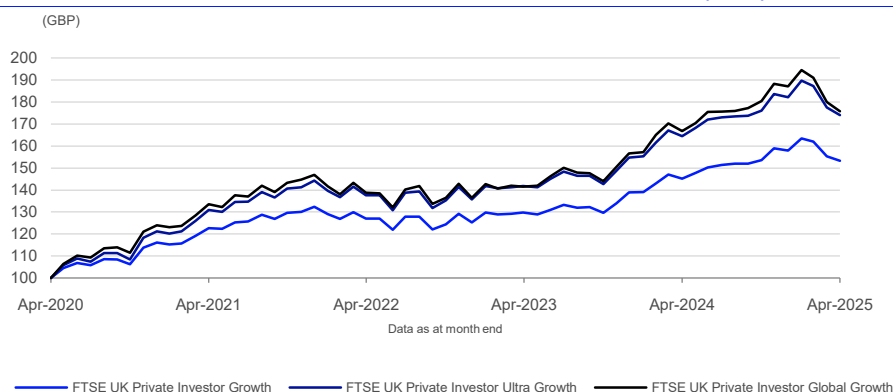
### Transparency

Index rules are freely available on the FTSE Russell website.

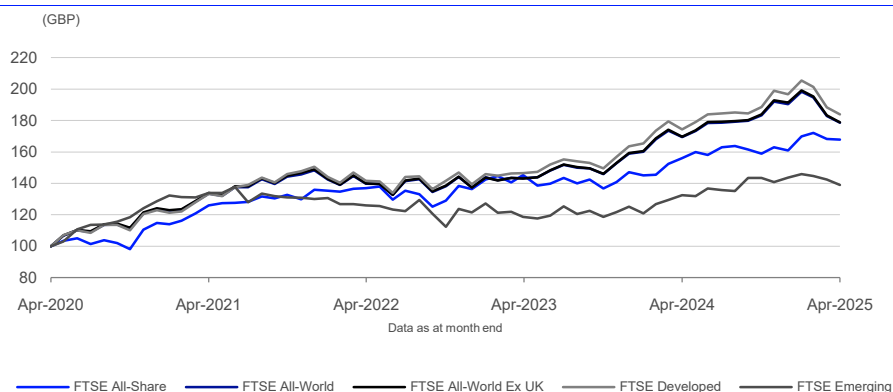
### FTSE Private Investor Index Series 5-Year Performance - Total Return



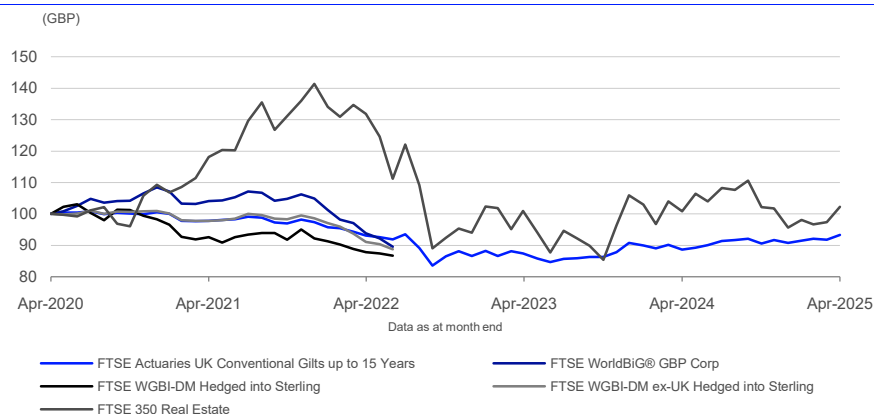
### FTSE Private Investor Index Series 5-Year Performance - Total Return (cont.)



### Component Indexes 5-Year Performance - Total Return



### Component Indexes 5-Year Performance - Total Return (cont.)



## INFORMATION

### Index Launch

Price Index – Q1 1997

Total Return Index – Q1 1998

Conservative and Global Growth Indexes - July 2011

Ultra Conservative and Ultra Growth Indexes - April 2018

### Base Date

Ultra Conservative - 21 Sep 2012

Conservative - Price & TR 31 Dec 2010

Income - Price 31 Dec 1986; TR 1 Jan 1988

Balanced - Price 31 Dec 1986; TR 1 Jan 1988

Growth - Price 31 Dec 1986; TR 1 Jan 1988

Ultra Growth - 21 Sep 2012

Global Growth - Price & TR 31 Dec 2010

Ultra Growth - 21 Sep 2012

Global Growth - Price & TR 31 Dec 2010

### Base Value

Ultra Conservative - Price & TR 1000

Conservative - Price & TR 1000

Income - Price 1000; TR 324.22

Balanced - Price 1000; TR 306.8

Growth - Price 1000; TR 298.75

Ultra Growth - Price & TR 1000

Global Growth - Price & TR 1000

### Index Calculation

End-of-day indexes available

### Currency

GBP

### Review Dates

The asset allocation levels for the FTSE Private Investor Index Series will be reviewed semi annually in March and September. The Component indexes of each Private Investor Index are subject to their own ground rules.

FTSE Private Investor Index Series Performance and Volatility –Total Return

Index (GBP)	Return %						Return pa %*		Volatility %**		
	3M	6M	YTD	12M	3YR	5YR	3YR	5YR	1YR	3YR	5YR
FTSE UK Private Investor Ultra Conservative	-1.4	0.5	-0.2	2.4	-3.5	-10.1	-1.2	-2.1	5.1	5.2	3.9
FTSE UK Private Investor Conservative	-3.2	0.4	-1.2	4.1	8.2	15.8	2.7	3.0	4.7	5.1	4.7
FTSE UK Private Investor Income	-4.4	0.1	-1.9	4.6	12.8	29.4	4.1	5.3	6.2	6.4	5.9
FTSE UK Private Investor Balanced	-5.3	0.0	-2.4	5.1	17.1	41.4	5.4	7.2	7.7	7.6	7.0
FTSE UK Private Investor Growth	-6.2	-0.2	-2.9	5.5	20.6	53.2	6.4	8.9	9.0	8.9	8.1
FTSE UK Private Investor Ultra Growth	-8.3	-1.1	-4.4	5.8	26.5	74.1	8.1	11.7	12.1	11.5	10.3
FTSE UK Private Investor Global Growth	-9.6	-2.5	-6.0	5.4	26.7	75.9	8.2	12.0	13.4	12.6	10.7

\* Compound annual returns measured over 3 and 5 years respectively  
\*\* Volatility – 1YR based on 12 months daily data. 3YR based on weekly data (Wednesday to Wednesday). 5YR based on monthly data

Component Indexes – Total Return

Index (GBP)	Return %						Return pa %*		Volatility %**		
	3M	6M	YTD	12M	3YR	5YR	3YR	5YR	1YR	3YR	5YR
FTSE All-Share	-1.2	5.6	4.2	7.5	22.6	67.9	7.0	10.9	12.8	13.7	11.2
FTSE All-World	-9.9	-2.5	-6.2	5.4	27.8	78.6	8.5	12.3	14.0	12.8	11.1
FTSE All-World Ex UK	-10.2	-2.8	-6.6	5.3	27.8	78.8	8.5	12.3	14.3	13.0	11.2
FTSE Developed	-10.5	-2.4	-6.5	5.5	30.0	83.9	9.1	13.0	15.0	13.2	11.8
FTSE Emerging	-4.8	-3.2	-3.3	4.8	10.3	38.9	3.3	6.8	14.0	14.4	11.7
FTSE Actuaries UK Conventional Gilts up to 15 Years	2.0	3.1	2.8	5.2	0.2	-6.7	0.1	-1.4	3.7	5.9	5.6
FTSE WorldBiG® GBP Corp	-	-	-	-	-	-	-	-	-	-	-
FTSE WGBI-DM Hedged into Sterling	-	-	-	-	-	-	-	-	-	-	-
FTSE WGBI-DM ex-UK Hedged into Sterling	-	-	-	-	-	-	-	-	-	-	-
FTSE 350 Real Estate	4.3	0.2	7.0	1.5	-22.4	2.3	-8.1	0.5	19.1	22.4	20.7

\* Compound annual returns measured over 3 and 5 years respectively  
\*\* Volatility – 1YR based on 12 months daily data. 3YR based on weekly data (Wednesday to Wednesday). 5YR based on monthly data

Year-on-Year Performance - Total Return

Index % (GBP)	2015	2016	2017	2018	2019	2020	2021	2022	2023	2024
FTSE UK Private Investor Ultra Conservative	1.1	5.7	1.8	0.5	6.1	6.0	-2.1	-11.0	1.1	0.0
FTSE UK Private Investor Conservative	1.9	12.9	6.5	-1.4	9.3	6.0	5.0	-7.4	6.0	6.1
FTSE UK Private Investor Income	2.1	14.9	8.5	-2.8	12.0	7.1	8.5	-6.4	7.8	8.9
FTSE UK Private Investor Balanced	2.7	17.1	9.7	-2.8	14.0	6.9	11.4	-5.9	9.4	11.4
FTSE UK Private Investor Growth	3.0	19.2	11.4	-3.8	16.7	7.6	13.9	-5.3	10.9	13.7
FTSE UK Private Investor Ultra Growth	3.6	25.7	13.2	-4.3	20.9	8.8	19.0	-5.9	14.0	17.7
FTSE UK Private Investor Global Growth	4.4	29.8	13.9	-3.9	21.8	12.9	18.5	-7.2	14.8	19.5

FTSE Private Investor Index Series Return/Risk Ratio and Drawdown – Total Return

Index (GBP)	Return/Risk Ratio				Drawdown (%)			
	1YR	3YR	5YR	10YR	1YR	3YR	5YR	10YR
FTSE UK Private Investor Ultra Conservative	0.5	-0.2	-0.5	0.2	-3.2	-9.1	-16.8	-16.8
FTSE UK Private Investor Conservative	0.8	0.5	0.6	0.8	-6.0	-6.1	-9.9	-9.9
FTSE UK Private Investor Income	0.7	0.6	0.9	0.9	-8.0	-8.0	-9.9	-13.2
FTSE UK Private Investor Balanced	0.6	0.7	1.0	0.9	-9.9	-9.9	-10.2	-17.1
FTSE UK Private Investor Growth	0.6	0.7	1.1	0.9	-11.7	-11.7	-11.7	-20.5
FTSE UK Private Investor Ultra Growth	0.5	0.7	1.1	0.9	-15.2	-15.2	-15.2	-25.7
FTSE UK Private Investor Global Growth	0.4	0.6	1.1	0.9	-16.5	-16.5	-16.5	-24.9

Return/Risk Ratio – based on compound annual returns and volatility in Performance and Volatility table  
Drawdown - based on daily data

Component Indexes Return/Risk Ratio and Drawdown – Total Return

Index (GBP)	Return/Risk Ratio				Drawdown (%)			
	1YR	3YR	5YR	10YR	1YR	3YR	5YR	10YR
FTSE All-Share	0.6	0.5	1.0	0.5	-12.8	-12.8	-12.8	-35.3
FTSE All-World	0.4	0.6	1.1	0.9	-16.9	-16.9	-16.9	-25.3
FTSE All-World Ex UK	0.4	0.6	1.1	0.9	-17.3	-17.3	-17.3	-25.0
FTSE Developed	0.4	0.6	1.1	0.9	-17.7	-17.7	-17.7	-25.9
FTSE Emerging	0.3	0.3	0.6	0.4	-13.2	-14.1	-22.1	-29.2
FTSE Actuaries UK Conventional Gilts up to 15 Years	1.4	0.0	-0.2	0.1	-3.5	-12.9	-18.4	-18.4
FTSE WorldBiG® GBP Corp	-	-	-	-	-	-	-	-
FTSE WGBI-DM Hedged into Sterling	-	-	-	-	-	-	-	-
FTSE WGBI-DM ex-UK Hedged into Sterling	-	-	-	-	-	-	-	-
FTSE 350 Real Estate	0.1	-0.3	0.0	0.0	-21.7	-37.3	-41.7	-41.7

Return/Risk Ratio – based on compound annual returns and volatility in Performance and Volatility table  
Drawdown - based on daily data

© 2025 London Stock Exchange Group plc and its applicable group undertakings ("LSEG"). LSEG includes (1) FTSE International Limited ("FTSE"), (2) Frank Russell Company ("Russell"), (3) FTSE Global Debt Capital Markets Inc. and FTSE Global Debt Capital Markets Limited (together, "FTSE Canada"), (4) FTSE Fixed Income Europe Limited ("FTSE FI Europe"), (5) FTSE Fixed Income LLC ("FTSE FI"), (6) FTSE (Beijing) Consulting Limited ("WOFE") (7) Refinitiv Benchmark Services (UK) Limited ("RBSL"), (8) Refinitiv Limited ("RL") and (9) Beyond Ratings S.A.S. ("BR"). All rights reserved.

FTSE Russell® is a trading name of FTSE, Russell, FTSE Canada, FTSE FI, FTSE FI Europe, WOFE, RBSL, RL, and BR. "FTSE®", "Russell®", "FTSE Russell®", "FTSE4Good®", "ICB®", "Refinitiv", "Beyond Ratings®", "WMR™", "FR™" and all other trademarks and service marks used herein (whether registered or unregistered) are trademarks and/or service marks owned or licensed by the applicable member of LSEG or their respective licensors and are owned, or used under licence, by FTSE, Russell, FTSE Canada, FTSE FI, FTSE FI Europe, WOFE, RBSL, RL or BR. FTSE International Limited is authorised and regulated by the Financial Conduct Authority as a benchmark administrator. Refinitiv Benchmark Services (UK) Limited is authorised and regulated by the Financial Conduct Authority as a benchmark administrator.

All information is provided for information purposes only. All information and data contained in this publication is obtained by LSEG, from sources believed by it to be accurate and reliable. Because of the possibility of human and mechanical inaccuracy as well as other factors, however, such information and data is provided "as is" without warranty of any kind. No member of LSEG nor their respective directors, officers, employees, partners or licensors make any claim, prediction, warranty or representation whatsoever, expressly or impliedly, either as to the accuracy, timeliness, completeness, merchantability of any information or LSEG Products, or of results to be obtained from the use of LSEG products, including but not limited to indices, rates, data and analytics, or the fitness or suitability of the LSEG products for any particular purpose to which they might be put. The user of the information assumes the entire risk of any use it may make or permit to be made of the information.

No responsibility or liability can be accepted by any member of LSEG nor their respective directors, officers, employees, partners or licensors for (a) any loss or damage in whole or in part caused by, resulting from, or relating to any inaccuracy (negligent or otherwise) or other circumstance involved in procuring, collecting, compiling, interpreting, analysing, editing, transcribing, transmitting, communicating or delivering any such information or data or from use of this document or links to this document or (b) any direct, indirect, special, consequential or incidental damages whatsoever, even if any member of LSEG is advised in advance of the possibility of such damages, resulting from the use of, or inability to use, such information.

No member of LSEG nor their respective directors, officers, employees, partners or licensors provide investment advice and nothing in this document should be taken as constituting financial or investment advice. No member of LSEG nor their respective directors, officers, employees, partners or licensors make any representation regarding the advisability of investing in any asset or whether such investment creates any legal or compliance risks for the investor. A decision to invest in any such asset should not be made in reliance on any information herein. Indices and rates cannot be invested in directly. Inclusion of an asset in an index or rate is not a recommendation to buy, sell or hold that asset nor confirmation that any particular investor may lawfully buy, sell or hold the asset or an index or rate containing the asset. The general information contained in this publication should not be acted upon without obtaining specific legal, tax, and investment advice from a licensed professional.

Past performance is no guarantee of future results. Charts and graphs are provided for illustrative purposes only. Index and/or rate returns shown may not represent the results of the actual trading of investable assets. Certain returns shown may reflect back-tested performance. All performance presented prior to the index or rate inception date is back-tested performance. Back-tested performance is not actual performance, but is hypothetical. The back-test calculations are based on the same methodology that was in effect when the index or rate was officially launched. However, back-tested data may reflect the application of the index or rate methodology with the benefit of hindsight, and the historic calculations of an index or rate may change from month to month based on revisions to the underlying economic data used in the calculation of the index or rate.

No part of this information may be reproduced, stored in a retrieval system or transmitted in any form or by any means, electronic, mechanical, photocopying, recording or otherwise, without prior written permission of the applicable member of LSEG. Use and distribution of LSEG data requires a licence from LSEG and/or its licensors.

Data definitions available from  
info@ftserussell.com

To learn more, visit lseg.com/ftse-russell;  
email info@ftserussell.com; or  
call your regional Client Services Team office:

EMEA

+44 (0) 20 7866 1810

North America

+1 877 503 6437

Asia-Pacific

Hong Kong +852 2164 3333  
Tokyo +81 3 6441 1430  
Sydney +61 (0) 2 7228 5659