

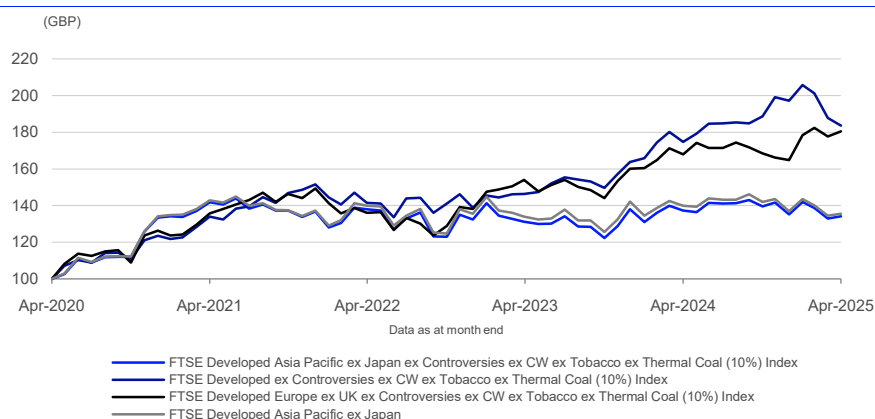
# FTSE Developed APAC ex Japan ex Contro ex CW ex Tobacco ex Thermal Coal (10%) Index

Data as at: 30 April 2025

The FTSE Developed ex Controversies ex CW Indexes measure the performance of sub-indexes of the FTSE Global Equity Series after excluding the companies involved in Weapons (Chemical & Biological, Cluster Munitions, Anti-Personnel Mines) and based on Controversial Conduct.

The indexes are part of the FTSE Global Choice Index Series, which is designed to help investors align their values with their investment choices by selecting companies based on the impact of their products and conduct on society and the environment.

## 5-Year Performance - Total Return



## Performance and Volatility - Total Return

Index (GBP)	Return %						Return pa %*		Volatility %**		
	3M	6M	YTD	12M	3YR	5YR	3YR	5YR	1YR	3YR	5YR
FTSE Developed Asia Pacific ex Japan ex Controversies ex CW ex Tobacco ex Thermal Coal (10%) Index	-5.5	-3.9	-0.8	-2.2	-2.7	34.2	-0.9	6.1	16.3	16.2	14.3
FTSE Developed ex Controversies ex CW ex Tobacco ex Thermal Coal (10%) Index	-10.8	-2.7	-6.9	5.1	29.9	83.6	9.1	12.9	15.3	13.4	12.0
FTSE Developed Europe ex UK ex Controversies ex CW ex Tobacco ex Thermal Coal (10%) Index	1.1	7.0	9.4	7.4	32.6	80.4	9.8	12.5	13.9	13.9	13.2
FTSE Developed Asia Pacific ex Japan	-5.5	-4.5	-1.0	-3.1	-3.1	35.6	-1.0	6.3	16.2	16.2	14.4

\* Compound annual returns measured over 3 and 5 years respectively

\*\* Volatility – 1YR based on 12 months daily data. 3YR based on weekly data (Wednesday to Wednesday). 5YR based on monthly data

## FEATURES

### Objective

The index is designed for use in the creation of index tracking funds, derivatives and as a performance benchmark.

### Investability

Stocks are selected and weighted to ensure that the index is investable.

### Liquidity

Stocks are screened to ensure that the index is tradable.

### Transparency

Index methodologies are freely available on the FTSE Russell website.

### Availability

The index is calculated based on price and total return methodologies, both real time and end of day.

### Industry Classification Benchmark (ICB)

Index constituents are categorized in accordance with the Industry Classification Benchmark (ICB), the global standard for industry sector analysis.

Year-on-Year Performance - Total Return

Index % (GBP)	2020	2021	2022	2023	2024
FTSE Developed Asia Pacific ex Japan ex Controversies ex CW ex Tobacco ex Thermal Coal (10%) Index	14.9	2.5	-3.2	4.2	-2.0
FTSE Developed ex Controversies ex CW ex Tobacco ex Thermal Coal (10%) Index	14.0	22.6	-8.4	18.1	20.4
FTSE Developed Europe ex UK ex Controversies ex CW ex Tobacco ex Thermal Coal (10%) Index	8.9	18.1	-7.4	15.9	3.0
FTSE Developed Asia Pacific ex Japan	15.1	2.4	-1.4	5.0	-3.7

Return/Risk Ratio and Drawdown - Total Return

Index (GBP)	Return/Risk Ratio				Drawdown (%)			
	1YR	3YR	5YR	10YR	1YR	3YR	5YR	10YR
FTSE Developed Asia Pacific ex Japan ex Controversies ex CW ex Tobacco ex Thermal Coal (10%) Index	-0.1	0.0	0.4	0.3	-16.2	-16.6	-16.6	-31.3
FTSE Developed ex Controversies ex CW ex Tobacco ex Thermal Coal (10%) Index	0.3	0.6	1.1	0.9	-18.1	-18.1	-18.1	-25.9
FTSE Developed Europe ex UK ex Controversies ex CW ex Tobacco ex Thermal Coal (10%) Index	0.5	0.8	0.9	0.7	-13.2	-13.2	-20.0	-27.9
FTSE Developed Asia Pacific ex Japan	-0.2	-0.1	0.4	0.3	-17.1	-17.6	-17.6	-31.5

Return/Risk Ratio – based on compound annual returns and volatility in Performance and Volatility table  
Drawdown - based on daily data

Top 10 Constituents

Constituent	Country/Market	ICB Sector	Net MCap (GBPm)	Wgt %
Samsung Electronics	Korea	Telecommunications Equipment	139,092	6.97
Commonwealth Bank of Australia	Australia	Banks	133,573	6.69
Alia Group Ltd.	Hong Kong	Life Insurance	60,470	3.03
CSL	Australia	Pharmaceuticals and Biotechnology	58,008	2.91
Westpac Banking Corp	Australia	Banks	53,969	2.70
National Australia Bank	Australia	Banks	53,699	2.69
SK Hynix	Korea	Technology Hardware and Equipment	50,333	2.52
DBS Group Holdings	Singapore	Banks	48,978	2.45
ANZ Group Holdings	Australia	Banks	43,007	2.15
Wesfarmers	Australia	Retailers	42,459	2.13
Totals			683,586	34.24

Country/Market Breakdown

Country/Market	FTSE Developed Asia Pacific ex Japan ex Controversies ex CW ex Tobacco ex Thermal Coal (10%) Index		FTSE Developed Asia Pacific ex Japan		Diff %
	No. of Cons	Wgt %	No. of Cons	Wgt %	
Australia	97	45.83	103	47.92	-2.09
Hong Kong	67	13.93	68	13.53	0.40
Korea	140	28.39	145	27.46	0.93
New Zealand	12	1.78	12	1.66	0.11
Singapore	35	10.07	35	9.43	0.65
Totals	351	100.00	363	100.00	

INFORMATION

Index Universe

FTSE Developed Asia Pacific ex Japan Index

Index Launch

17 April 2020

Base Date

20 March 2015

Base Value

1000

Investability Screen

Actual free float applied and liquidity screened

Index Calculation

End-of-day index available

End-of-Day Distribution

Via FTP and email

Currency

USD, GBP, EUR, JPY, AUD, CNY, HKD, CAD

Review Dates

Quarterly in March, June, September, December

ICB Supersector Breakdown

		FTSE Developed Asia Pacific ex Japan ex Controversies ex CW ex Tobacco ex Thermal Coal (10%) Index		FTSE Developed Asia Pacific ex Japan		
ICB Code	ICB Supersector	No. of Cons	Wgt %	No. of Cons	Wgt %	Diff %
1010	Technology	21	6.55	21	6.13	0.42
1510	Telecommunications	11	9.67	11	9.05	0.62
2010	Health Care	22	7.07	22	6.61	0.45
3010	Banks	21	23.36	21	21.86	1.50
3020	Financial Services	18	5.97	18	5.59	0.38
3030	Insurance	15	6.06	15	5.67	0.39
3510	Real Estate	39	7.62	39	7.13	0.49
4010	Automobiles and Parts	10	2.13	10	2.00	0.14
4020	Consumer Products and Services	21	1.69	21	1.58	0.11
4030	Media	2	0.18	2	0.17	0.01
4040	Retailers	8	2.64	8	2.47	0.17
4050	Travel and Leisure	20	2.82	20	2.64	0.18
4510	Food Beverage and Tobacco	17	1.40	18	1.58	-0.18
4520	Personal Care Drug and Grocery Stores	10	1.97	10	1.84	0.13
5010	Construction and Materials	10	1.08	10	1.01	0.07
5020	Industrial Goods and Services	59	10.30	61	9.72	0.58
5510	Basic Resources	17	4.24	19	8.77	-4.53
5520	Chemicals	6	0.42	6	0.39	0.03
6010	Energy	11	2.52	15	2.57	-0.05
6510	Utilities	13	2.31	16	3.21	-0.90
Totals		351	100.00	363	100.00	

Index Characteristics

Attributes	FTSE Developed Asia Pacific ex Japan ex Controversies ex CW ex Tobacco ex Thermal Coal (10%) Index	FTSE Developed Asia Pacific ex Japan
Number of constituents	351	363
Net MCap (GBPm)	1,996,351	2,133,038
Dividend Yield %	3.37	3.48
Constituent Sizes (Net MCap GBPm)		
Average	5,688	5,876
Largest	139,092	139,092
Smallest	80	80
Median	2,031	2,031
Weight of Largest Constituent (%)	6.97	6.52
Top 10 Holdings (% Index MCap)	34.24	34.38

© 2025 London Stock Exchange Group plc and its applicable group undertakings ("LSEG"). LSEG includes (1) FTSE International Limited ("FTSE"), (2) Frank Russell Company ("Russell"), (3) FTSE Global Debt Capital Markets Inc. and FTSE Global Debt Capital Markets Limited (together, "FTSE Canada"), (4) FTSE Fixed Income Europe Limited ("FTSE FI Europe"), (5) FTSE Fixed Income LLC ("FTSE FI"), (6) FTSE (Beijing) Consulting Limited ("WOFE") (7) Refinitiv Benchmark Services (UK) Limited ("RBSL"), (8) Refinitiv Limited ("RL") and (9) Beyond Ratings S.A.S. ("BR"). All rights reserved.

FTSE Russell® is a trading name of FTSE, Russell, FTSE Canada, FTSE FI, FTSE FI Europe, WOFE, RBSL, RL, and BR. "FTSE®", "Russell®", "FTSE Russell®", "FTSE4Good®", "ICB®", "Refinitiv", "Beyond Ratings®", "WMR™", "FR™" and all other trademarks and service marks used herein (whether registered or unregistered) are trademarks and/or service marks owned or licensed by the applicable member of LSEG or their respective licensors and are owned, or used under licence, by FTSE, Russell, FTSE Canada, FTSE FI, FTSE FI Europe, WOFE, RBSL, RL or BR. FTSE International Limited is authorised and regulated by the Financial Conduct Authority as a benchmark administrator. Refinitiv Benchmark Services (UK) Limited is authorised and regulated by the Financial Conduct Authority as a benchmark administrator.

All information is provided for information purposes only. All information and data contained in this publication is obtained by LSEG, from sources believed by it to be accurate and reliable. Because of the possibility of human and mechanical inaccuracy as well as other factors, however, such information and data is provided "as is" without warranty of any kind. No member of LSEG nor their respective directors, officers, employees, partners or licensors make any claim, prediction, warranty or representation whatsoever, expressly or impliedly, either as to the accuracy, timeliness, completeness, merchantability of any information or LSEG Products, or of results to be obtained from the use of LSEG products, including but not limited to indices, rates, data and analytics, or the fitness or suitability of the LSEG products for any particular purpose to which they might be put. The user of the information assumes the entire risk of any use it may make or permit to be made of the information.

No responsibility or liability can be accepted by any member of LSEG nor their respective directors, officers, employees, partners or licensors for (a) any loss or damage in whole or in part caused by, resulting from, or relating to any inaccuracy (negligent or otherwise) or other circumstance involved in procuring, collecting, compiling, interpreting, analysing, editing, transcribing, transmitting, communicating or delivering any such information or data or from use of this document or links to this document or (b) any direct, indirect, special, consequential or incidental damages whatsoever, even if any member of LSEG is advised in advance of the possibility of such damages, resulting from the use of, or inability to use, such information.

No member of LSEG nor their respective directors, officers, employees, partners or licensors provide investment advice and nothing in this document should be taken as constituting financial or investment advice. No member of LSEG nor their respective directors, officers, employees, partners or licensors make any representation regarding the advisability of investing in any asset or whether such investment creates any legal or compliance risks for the investor. A decision to invest in any such asset should not be made in reliance on any information herein. Indices and rates cannot be invested in directly. Inclusion of an asset in an index or rate is not a recommendation to buy, sell or hold that asset nor confirmation that any particular investor may lawfully buy, sell or hold the asset or an index or rate containing the asset. The general information contained in this publication should not be acted upon without obtaining specific legal, tax, and investment advice from a licensed professional.

Past performance is no guarantee of future results. Charts and graphs are provided for illustrative purposes only. Index and/or rate returns shown may not represent the results of the actual trading of investable assets. Certain returns shown may reflect back-tested performance. All performance presented prior to the index or rate inception date is back-tested performance. Back-tested performance is not actual performance, but is hypothetical. The back-test calculations are based on the same methodology that was in effect when the index or rate was officially launched. However, back-tested data may reflect the application of the index or rate methodology with the benefit of hindsight, and the historic calculations of an index or rate may change from month to month based on revisions to the underlying economic data used in the calculation of the index or rate.

No part of this information may be reproduced, stored in a retrieval system or transmitted in any form or by any means, electronic, mechanical, photocopying, recording or otherwise, without prior written permission of the applicable member of LSEG. Use and distribution of LSEG data requires a licence from LSEG and/or its licensors.

Data definitions available from  
info@ftserussell.com

To learn more, visit lseg.com/ftse-russell;  
email info@ftserussell.com; or  
call your regional Client Services Team office:

**EMEA**  
+44 (0) 20 7866 1810

**North America**  
+1 877 503 6437

**Asia-Pacific**  
Hong Kong +852 2164 3333  
Tokyo +81 3 6441 1430  
Sydney +61 (0) 2 7228 5659