

FTSE Bursa Malaysia Index Series

Data as at: 31 March 2025

FTSE Group has partnered with Bursa Malaysia to create the definitive family of indices for the Malaysian market - the FTSE Bursa Malaysia Index Series. All Malaysian companies listed on Bursa Malaysia's Main Market and ACE Market are eligible for inclusion, subject to passing the FTSE international standards of liquidity and investability.

The series divides the market into size segments (all cap, large cap, mid cap, small cap and fledgling), and includes Shariah-compliant indices, as well as themed indices representing the palm oil plantation sector. Tradable and benchmark indices within the series are listed below. See the relevant index factsheet for further information.

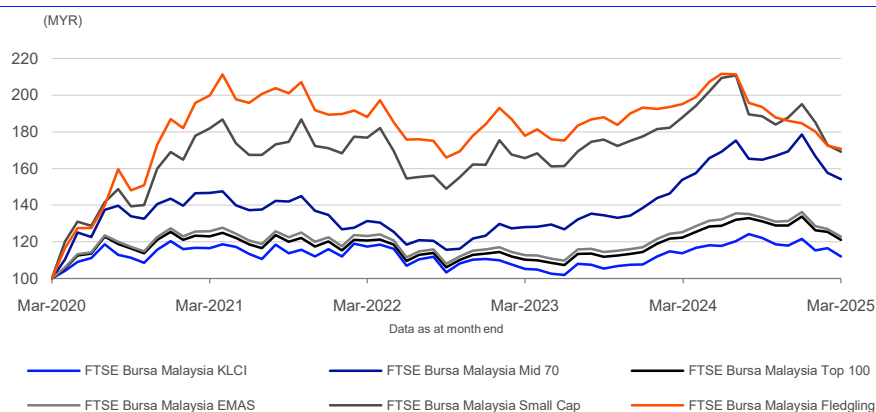
Tradable Indices

- FTSE Bursa Malaysia KLCI - 30 largest companies in FTSE Bursa Malaysia EMAS Index (FBMEMAS) by full market capitalisation.
- FTSE Bursa Malaysia Mid 70 Index - next 70 companies in FBMEMAS.
- FTSE Bursa Malaysia Top 100 Index - sum of constituents in the above two indices.
- FTSE Bursa Malaysia Hijrah Shariah Index - 30 largest Shariah-compliant companies in FBMEMAS screened by Yasaar Ltd and the Securities Commission's Shariah Advisory Council (SAC).
- FTSE Bursa Malaysia Asian Palm Oil Plantation Index (USD and MYR) - companies earning a substantial proportion of revenue from palm oil activities in the Asia Pacific Region.

Benchmark Indices

- The FTSE Bursa Malaysia EMAS Index - constituents of the FTSE Bursa Malaysia Top 100 Index and FTSE Bursa Malaysia Small Cap Index.
- FTSE Bursa Malaysia EMAS Industry Indices - 10 Industries, 19 Supersectors and 39 Sectors.
- FTSE Bursa Malaysia Small Cap Index - top 98% of the Bursa Malaysia Main Market excluding FTSE Bursa Malaysia Top 100 Index constituents.
- FTSE Bursa Malaysia EMAS Shariah Index - Shariah-compliant constituents of the FBMEMAS that meet the screening requirements of the SAC.
- FTSE Bursa Malaysia ACE Index - all eligible companies listed on the ACE Market.
- FTSE Bursa Malaysia Palm Oil Plantation Index - based on FBMEMAS and comprising companies earning a substantial proportion of revenue from palm oil activities.

5-Year Performance - Capital Return



FEATURES

Coverage

The FTSE Bursa Malaysia Index Series includes ICB industry, supersector and sector indexes and indexes representing large cap, mid cap, small cap, fledgling and ACE constituents.

Objective

Indexes in the FTSE Bursa Malaysia Index Series are designed for the creation of index tracking funds, derivatives, Exchange Traded Funds (ETFs), and as a performance benchmark.

Investability

Stocks are free-float weighted to ensure that only the investable opportunity set is included within the indexes.

Liquidity

Stocks are screened to ensure that the index is tradable (this does not apply to the FTSE Bursa Malaysia Fledgling Index and the FTSE Bursa Malaysia ACE Index).

Transparency

Index methodologies are freely available on the FTSE Russell website.

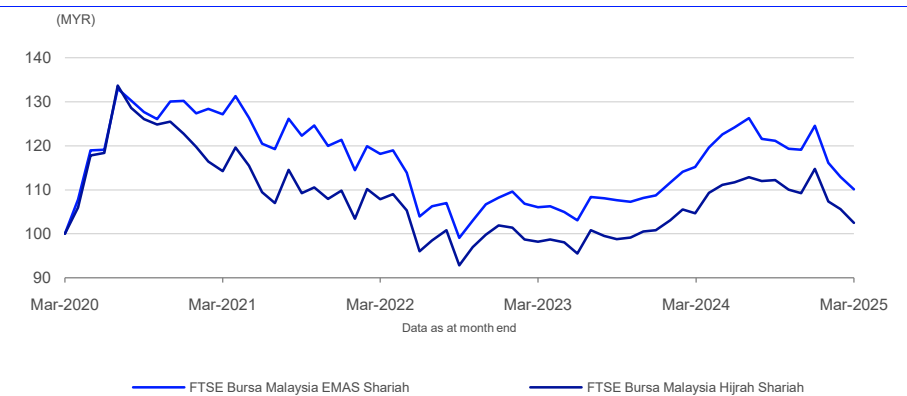
Availability

The indexes are calculated based on price and total return methodologies, both real time and end-of-day.

Global Sector Classification

Index constituents are categorised in accordance with the Industry Classification Benchmark (ICB), the global standard for industry sector analysis.

5-Year Performance - Shariah Indices - Capital Return



3-Year Correlation

	FTSE Bursa Malaysia KLCI	FTSE Bursa Malaysia Mid 70	FTSE Bursa Malaysia Top 100	FTSE Bursa Malaysia EMAS	FTSE Bursa Malaysia Small Cap	FTSE Bursa Malaysia Fledgling	FTSE Bursa Malaysia EMAS Shariah	FTSE Bursa Malaysia Hijrah Shariah
FTSE Bursa Malaysia KLCI	1.000	0.539	0.966	0.947	0.502	0.467	0.842	0.910
FTSE Bursa Malaysia Mid 70		1.000	0.737	0.775	0.859	0.707	0.852	0.710
FTSE Bursa Malaysia Top 100			1.000	0.997	0.666	0.590	0.938	0.949
FTSE Bursa Malaysia EMAS				1.000	0.723	0.642	0.958	0.952
FTSE Bursa Malaysia Small Cap					1.000	0.883	0.827	0.679
FTSE Bursa Malaysia Fledgling						1.000	0.734	0.618
FTSE Bursa Malaysia EMAS Shariah							1.000	0.962
FTSE Bursa Malaysia Hijrah Shariah								1.000

Performance and Volatility - Capital Return

Index (MYR)	Return %						Return pa %*		Volatility %**		
	3M	6M	YTD	12M	3YR	5YR	3YR	5YR	1YR	3YR	5YR
FTSE Bursa Malaysia KLCI	-7.8	-8.2	-7.8	-1.5	-4.6	12.0	-1.6	2.3	10.6	10.5	11.9
FTSE Bursa Malaysia Mid 70	-13.6	-6.5	-13.6	0.3	17.5	54.3	5.5	9.1	15.7	12.9	14.1
FTSE Bursa Malaysia Top 100	-9.5	-7.6	-9.5	-1.0	0.3	21.1	0.1	3.9	11.3	10.5	11.4
FTSE Bursa Malaysia EMAS	-9.8	-7.9	-9.8	-1.9	-0.3	22.8	-0.1	4.2	11.5	10.6	11.5
FTSE Bursa Malaysia Small Cap	-13.3	-10.3	-13.3	-9.9	-4.4	69.2	-1.5	11.1	16.2	14.4	18.3
FTSE Bursa Malaysia Fledgling	-7.5	-11.8	-7.5	-12.5	-9.2	70.8	-3.2	11.3	12.5	10.9	17.2
FTSE Bursa Malaysia EMAS Shariah	-11.6	-9.2	-11.6	-4.5	-6.9	10.1	-2.3	1.9	12.7	12.3	13.1
FTSE Bursa Malaysia Hijrah Shariah	-10.7	-8.7	-10.7	-2.1	-5.0	2.5	-1.7	0.5	11.6	12.0	13.8

* Compound annual returns measured over 3 and 5 years respectively
** Volatility – 1YR based on 12 months daily data. 3YR based on weekly data (Wednesday to Wednesday). 5YR based on monthly data

Return/Risk Ratio and Drawdown - Capital Return

Index (MYR)	Return/Risk Ratio				Drawdown (%)			
	1YR	3YR	5YR	10YR	1YR	3YR	5YR	10YR
FTSE Bursa Malaysia KLCI	-0.1	-0.2	0.2	-0.2	-11.6	-14.6	-18.5	-35.6
FTSE Bursa Malaysia Mid 70	0.0	0.4	0.6	0.1	-17.5	-17.5	-25.4	-45.2
FTSE Bursa Malaysia Top 100	-0.1	0.0	0.3	-0.1	-11.7	-14.8	-19.5	-37.4
FTSE Bursa Malaysia EMAS	-0.2	0.0	0.4	-0.1	-12.8	-15.2	-19.0	-38.6
FTSE Bursa Malaysia Small Cap	-0.6	-0.2	0.6	0.0	-25.8	-25.8	-25.8	-57.5
FTSE Bursa Malaysia Fledgling	-1.0	-0.4	0.7	0.1	-24.9	-24.9	-24.9	-52.2
FTSE Bursa Malaysia EMAS Shariah	-0.4	-0.2	0.1	-0.1	-18.0	-20.0	-28.4	-33.9
FTSE Bursa Malaysia Hijrah Shariah	-0.2	-0.2	0.0	-0.2	-13.6	-18.2	-33.3	-33.3

Return/Risk Ratio – based on compound annual returns and volatility in Performance and Volatility table
Drawdown - based on daily data

INFORMATION

Index Universe

See the relevant index factsheet for details of universe

Index Series Launch

26 June 2006

Investability Screen

Free-float adjusted and liquidity screened

Index Calculation

Real-time and end-of-day indices available

End-of-Day Distribution

Via FTP and email

Currency

MYR, EUR, GBP, USD and JPY

Review Dates

Semi-annually in June and December

Top 10 Constituents - FTSE Bursa Malaysia Top 100 Index

Constituent	Country/Market	ICB Sector	Net MCap (MYRm)	Wgt %
Malayan Banking	Malaysia	Banks	76,715	10.01
Public Bank BHD	Malaysia	Banks	65,563	8.56
Tenaga Nasional	Malaysia	Electricity	61,239	7.99
CIMB Group Holdings	Malaysia	Banks	58,298	7.61
Gamuda	Malaysia	Construction and Materials	21,533	2.81
IHH Healthcare	Malaysia	Health Care Providers	21,004	2.74
Telekom Malaysia	Malaysia	Telecommunications Service Providers	20,084	2.62
Press Metal Aluminium Holdings	Malaysia	Industrial Metals and Mining	18,591	2.43
SD Guthrie	Malaysia	Food Producers	17,845	2.33
AMMB Holdings	Malaysia	Banks	16,325	2.13
Totals			377,198	49.23

ICB Supersector Breakdown

		FTSE Bursa Malaysia EMAS			FTSE Bursa Malaysia Small Cap			FTSE Bursa Malaysia Fledgling		
ICB Code	ICB Supersector	No. of Cons	Net MCap (MYRm)	Wgt %	No. of Cons	Net MCap (MYRm)	Wgt %	No. of Cons	Net MCap (MYRm)	Wgt %
1010	Technology	24	24,118	2.87	17	5,998	7.98	21	1,118	5.29
1510	Telecommunications	8	58,545	6.96	3	493	0.66	1	66	0.31
2010	Health Care	12	39,183	4.66	7	2,618	3.48	7	483	2.29
3010	Banks	11	259,699	30.87	-	-	-	-	-	-
3020	Financial Services	8	8,956	1.06	5	1,544	2.05	3	178	0.84
3030	Insurance	3	3,009	0.36	2	861	1.15	2	95	0.45
3510	Real Estate	34	50,769	6.03	21	7,950	10.58	55	3,976	18.83
4010	Automobiles and Parts	6	4,181	0.50	5	2,446	3.26	12	796	3.77
4020	Consumer Products and Services	7	1,768	0.21	7	1,768	2.35	33	1,711	8.10
4030	Media	2	522	0.06	2	522	0.69	3	136	0.65
4040	Retailers	14	20,218	2.40	11	4,008	5.33	4	309	1.47
4050	Travel and Leisure	12	15,670	1.86	10	3,921	5.22	13	678	3.21
4510	Food Beverage and Tobacco	38	82,212	9.77	23	8,382	11.15	29	1,620	7.67
4520	Personal Care Drug and Grocery Stores	5	3,886	0.46	4	979	1.30	8	228	1.08
5010	Construction and Materials	34	47,234	5.61	27	9,984	13.28	60	3,640	17.24
5020	Industrial Goods and Services	47	49,342	5.86	38	12,732	16.94	75	3,722	17.63
5510	Basic Resources	14	21,971	2.61	12	2,648	3.52	31	1,622	7.68
5520	Chemicals	8	24,860	2.95	5	1,542	2.05	7	346	1.64
6010	Energy	21	25,681	3.05	16	5,501	7.32	4	187	0.89
6510	Utilities	10	99,553	11.83	3	1,258	1.67	4	201	0.95
Totals		318	841,374	100.00	218	75,156	100.00	372	21,113	100.00

Index Characteristics

Attributes	FTSE Bursa Malaysia EMAS	FTSE Bursa Malaysia EMAS Shariah	FTSE Bursa Malaysia Small Cap	FTSE Bursa Malaysia Fledgling
Number of constituents	318	263	218	372
Net MCap (MYRm)	841,374	514,040	75,156	21,113
Constituent Sizes (Net MCap MYRm)				
Average	2,646	1,955	345	57
Largest	76,715	61,239	1,776	233
Smallest	38	38	38	8
Median	431	400	227	43
Weight of Largest Constituent (%)	9.12	11.91	2.36	1.10
Top 10 Holdings (% Index MCap)	44.83	41.63	15.58	9.35



© 2025 London Stock Exchange Group plc and its applicable group undertakings ("LSEG"). LSEG includes (1) FTSE International Limited ("FTSE"), (2) Frank Russell Company ("Russell"), (3) FTSE Global Debt Capital Markets Inc. and FTSE Global Debt Capital Markets Limited (together, "FTSE Canada"), (4) FTSE Fixed Income Europe Limited ("FTSE FI Europe"), (5) FTSE Fixed Income LLC ("FTSE FI"), (6) FTSE (Beijing) Consulting Limited ("WOFE") (7) Refinitiv Benchmark Services (UK) Limited ("RBSL"), (8) Refinitiv Limited ("RL") and (9) Beyond Ratings S.A.S. ("BR"). All rights reserved.

FTSE Russell® is a trading name of FTSE, Russell, FTSE Canada, FTSE FI, FTSE FI Europe, WOFE, RBSL, RL, and BR. "FTSE®", "Russell®", "FTSE Russell®", "FTSE4Good®", "ICB®", "Refinitiv", "Beyond Ratings®", "WMR™", "FR™" and all other trademarks and service marks used herein (whether registered or unregistered) are trademarks and/or service marks owned or licensed by the applicable member of LSEG or their respective licensors and are owned, or used under licence, by FTSE, Russell, FTSE Canada, FTSE FI, FTSE FI Europe, WOFE, RBSL, RL or BR. FTSE International Limited is authorised and regulated by the Financial Conduct Authority as a benchmark administrator. Refinitiv Benchmark Services (UK) Limited is authorised and regulated by the Financial Conduct Authority as a benchmark administrator. Bursa Malaysia is a trade mark of Bursa Malaysia ("Partner"). All rights in and to the FTSE Bursa Malaysia Index Series ("Index") vest in FTSE Russell® and/or its relevant Partner(s).

All information is provided for information purposes only. All information and data contained in this publication is obtained by LSEG, from sources believed by it to be accurate and reliable. Because of the possibility of human and mechanical inaccuracy as well as other factors, however, such information and data is provided "as is" without warranty of any kind. No member of LSEG nor their respective directors, officers, employees, partners or licensors make any claim, prediction, warranty or representation whatsoever, expressly or impliedly, either as to the accuracy, timeliness, completeness, merchantability of any information or LSEG Products, or of results to be obtained from the use of LSEG products, including but not limited to indices, rates, data and analytics, or the fitness or suitability of the LSEG products for any particular purpose to which they might be put. The user of the information assumes the entire risk of any use it may make or permit to be made of the information.

No responsibility or liability can be accepted by any member of LSEG nor their respective directors, officers, employees, partners or licensors for (a) any loss or damage in whole or in part caused by, resulting from, or relating to any inaccuracy (negligent or otherwise) or other circumstance involved in procuring, collecting, compiling, interpreting, analysing, editing, transcribing, transmitting, communicating or delivering any such information or data or from use of this document or links to this document or (b) any direct, indirect, special, consequential or incidental damages whatsoever, even if any member of LSEG is advised in advance of the possibility of such damages, resulting from the use of, or inability to use, such information.

No member of LSEG nor their respective directors, officers, employees, partners or licensors provide investment advice and nothing in this document should be taken as constituting financial or investment advice. No member of LSEG nor their respective directors, officers, employees, partners or licensors make any representation regarding the advisability of investing in any asset or whether such investment creates any legal or compliance risks for the investor. A decision to invest in any such asset should not be made in reliance on any information herein. Indices and rates cannot be invested in directly. Inclusion of an asset in an index or rate is not a recommendation to buy, sell or hold that asset nor confirmation that any particular investor may lawfully buy, sell or hold the asset or an index or rate containing the asset. The general information contained in this publication should not be acted upon without obtaining specific legal, tax, and investment advice from a licensed professional.

Past performance is no guarantee of future results. Charts and graphs are provided for illustrative purposes only. Index and/or rate returns shown may not represent the results of the actual trading of investable assets. Certain returns shown may reflect back-tested performance. All performance presented prior to the index or rate inception date is back-tested performance. Back-tested performance is not actual performance, but is hypothetical. The back-test calculations are based on the same methodology that was in effect when the index or rate was officially launched. However, back-tested data may reflect the application of the index or rate methodology with the benefit of hindsight, and the historic calculations of an index or rate may change from month to month based on revisions to the underlying economic data used in the calculation of the index or rate.

No part of this information may be reproduced, stored in a retrieval system or transmitted in any form or by any means, electronic, mechanical, photocopying, recording or otherwise, without prior written permission of the applicable member of LSEG. Use and distribution of LSEG data requires a licence from LSEG and/or its licensors.

Data definitions available from
info@ftserussell.com

To learn more, visit lseg.com/ftse-russell;
email info@ftserussell.com; or
call your regional Client Services Team office:

EMEA

+44 (0) 20 7866 1810

North America

+1 877 503 6437

Asia-Pacific

Hong Kong +852 2164 3333
Tokyo +81 3 6441 1430
Sydney +61 (0) 2 7228 5659