

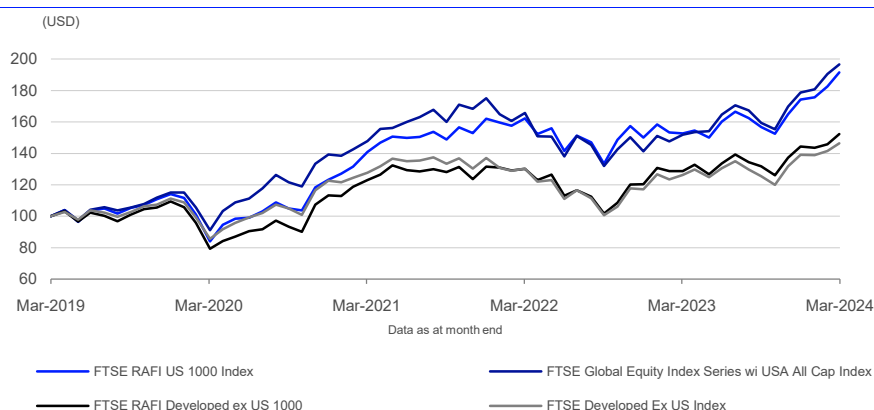
FTSE RAFI™ Index Series

Data as at: 29 March 2024

FTSE partners with Research Affiliates on the FTSE RAFI Index Series. Index constituents are weighted using a composite of fundamental factors, including total cash dividends, free cash flow, total sales and book equity value. Prices and market values are not determinants of the index weights. Consequently the indexes are less prone to excessive concentration arising from market fads, which can result in over-exposure to individual companies, sectors or countries.

The headline FTSE RAFI US 1000 Index is comprised of the largest 1000 US companies ranked by fundamentals in the FTSE Global Equity Index Series (GEIS). Similarly, the FTSE RAFI Developed ex US Index is comprised of the 1000 largest companies ranked by fundamentals from Developed countries in GEIS, excluding the US.

5-Year Performance - Total Return



Performance and Volatility - Total Return

Index (USD)	Return %						Return pa %*		Volatility %**		
	3M	6M	YTD	12M	3YR	5YR	3YR	5YR	1YR	3YR	5YR
FTSE RAFI US 1000 Index	10.0	22.3	10.0	25.6	36.0	91.6	10.8	13.9	11.0	15.6	19.5
FTSE Global Equity Index Series w/ USA All Cap Index	10.1	23.3	10.1	29.5	33.1	96.7	10.0	14.5	11.7	17.6	18.9
FTSE RAFI Developed ex US 1000	5.8	15.9	5.8	18.6	24.0	52.7	7.4	8.8	11.4	16.1	19.8
FTSE Developed Ex US Index	5.5	16.9	5.5	16.1	14.8	46.7	4.7	8.0	11.2	15.6	18.2

* Compound annual returns measured over 3 and 5 years respectively

** Volatility – 1YR based on 12 months daily data. 3YR based on weekly data (Wednesday to Wednesday). 5YR based on monthly data

Year-on-Year Performance - Total Return

Index % (USD)	2014	2015	2016	2017	2018	2019	2020	2021	2022	2023
FTSE RAFI US 1000 Index	12.6	-2.5	17.6	16.4	-8.3	28	8	31.6	-7.4	16.1
FTSE Global Equity Index Series w/ USA All Cap Index	12.5	0.5	12.5	21.5	-5.2	31.3	21.1	25.7	-19.2	26.3
FTSE RAFI Developed ex US 1000	-4.8	-4.8	7.3	25.7	-14.5	18.8	3.6	16.1	-8.4	19.9

FEATURES

Coverage

The FTSE RAFI Index Series provides global coverage through a range of country and regional indexes derived from the FTSE RAFI Developed ex US Index. FTSE RAFI indexes are also available covering Small Cap and Emerging Markets.

Objective

The indexes are designed for the creation of a range of financial products, including index-linked funds, ETFs and over-the-counter (OTC) products.

Liquidity

Stocks are screened to ensure that the indexes are tradable.

Transparency

Index methodologies are freely available on the FTSE Russell website.

Availability

The indexes are calculated based on price and total return methodologies.

Industry Classification Benchmark (ICB)

Index constituents are categorized in accordance with the Industry Classification Benchmark (ICB), the global standard for industry sector analysis.

Methodology

See www.ftserussell.com for a full explanation of the FTSE RAFI methodology.

Return/Risk Ratio and Drawdown - Total Return

Index (USD)	Return/Risk Ratio				Drawdown (%)			
	1YR	3YR	5YR	10YR	1YR	3YR	5YR	10YR
FTSE RAFI US 1000 Index	2.4	0.7	0.7	0.7	-10.2	-19.5	-38.1	-38.1
FTSE Global Equity Index Series wi USA All Cap Index	2.6	0.6	0.8	0.8	-10.6	-25.2	-34.9	-34.9
FTSE RAFI Developed ex US 1000	1.7	0.5	0.4	0.3	-9.7	-26.5	-38.4	-41.1

Return/Risk Ratio – based on compound annual returns and volatility in Performance and Volatility table
Drawdown - based on daily data

Index Characteristics

Attributes	FTSE RAFI US 1000	FTSE Global Equity Index Series wi USA All Cap	FTSE RAFI Developed ex US 1000	FTSE Developed Ex US
Number of constituents	1013	1737	1029	1501
Dividend Yield %	2.38	1.35	3.61	2.83
Constituent (Wgt %)				
Average	0.10	0.06	0.10	0.07
Largest	2.12	6.23	2.35	1.90
Median	0.03	0.01	0.04	0.02
Top 10 Holdings (Wgt %)	16.07	27.75	12.18	13.01

ICB Supersector Breakdown - US

ICB Code	ICB Supersector	FTSE RAFI US 1000		FTSE Global Equity Index Series wi USA All Cap		Diff %
		No. of Cons	Wgt %	No. of Cons	Wgt %	
1010	Technology	91	13.67	228	32.39	-18.73
1510	Telecommunications	20	4.58	31	1.97	2.61
2010	Health Care	79	11.06	216	11.72	-0.66
3010	Banks	57	8.21	99	3.58	4.64
3020	Financial Services	62	6.36	94	5.05	1.31
3030	Insurance	46	3.81	61	2.33	1.48
3510	Real Estate	82	3.38	124	2.70	0.68
4010	Automobiles and Parts	16	1.92	24	1.42	0.50
4020	Consumer Products and Services	56	1.95	105	2.22	-0.27
4030	Media	18	1.35	31	1.38	-0.04
4040	Retailers	49	6.27	59	6.98	-0.70
4050	Travel and Leisure	33	1.40	66	2.19	-0.79
4510	Food, Beverage and Tobacco	36	4.19	51	2.67	1.52
4520	Personal Care, Drug and Grocery Stores	18	3.68	25	1.81	1.88
5010	Construction and Materials	30	0.99	50	1.15	-0.16
5020	Industrial Goods and Services	170	11.44	256	11.90	-0.46
5510	Basic Resources	20	1.20	34	0.77	0.43
5520	Chemicals	22	1.60	32	1.16	0.44
6010	Energy	55	8.21	86	4.17	4.04
6510	Utilities	53	4.72	65	2.46	2.26
Totals		1013	100.00	1737	100.00	

INFORMATION

Index Universes

FTSE USA All Cap Index
FTSE Developed All Cap ex US Index

Index Series Launch

28 November 2005

Base Date

30 September 2005

Base Value

5000

Index Calculation

Real-time and end-of-day indexes available

End-of-Day Distribution

Indexes available at 2100 hours GMT /
FTSE RAFI Eurozone Index - 1630 hours GMT
Via FTP and email

Currency

USD, CAD, EUR, GBP, JPY and Local
(where specified)

Review Dates

Annually in March

ICB Supersector Breakdown - Developed ex US

		FTSE RAFI Developed ex US 1000		FTSE Developed Ex US		
ICB Code	ICB Supersector	No. of Cons	Wgt %	No. of Cons	Wgt %	Diff %
1010	Technology	65	4.01	108	8.98	-4.97
1510	Telecommunications	30	5.52	42	4.12	1.40
2010	Health Care	50	6.34	105	10.87	-4.53
3010	Banks	85	15.73	91	11.34	4.38
3020	Financial Services	44	2.98	61	3.63	-0.65
3030	Insurance	54	6.51	60	5.23	1.28
3510	Real Estate	57	2.24	105	2.40	-0.16
4010	Automobiles and Parts	42	6.62	53	4.52	2.10
4020	Consumer Products and Services	49	3.44	87	5.39	-1.95
4030	Media	12	0.67	22	1.14	-0.47
4040	Retailers	24	1.15	41	1.68	-0.53
4050	Travel and Leisure	27	0.77	55	1.42	-0.65
4510	Food, Beverage and Tobacco	43	3.87	77	4.55	-0.68
4520	Personal Care, Drug and Grocery Stores	32	2.52	47	2.40	0.12
5010	Construction and Materials	39	2.72	62	2.72	0.00
5020	Industrial Goods and Services	180	11.95	259	14.88	-2.92
5510	Basic Resources	50	5.60	56	3.62	1.98
5520	Chemicals	42	2.82	64	2.64	0.18
6010	Energy	54	9.97	46	5.39	4.58
6510	Utilities	50	4.54	60	3.06	1.49
Totals		1029	100.00	1501	100.00	

Country Breakdown

	FTSE RAFI Developed ex US 1000		FTSE Developed Ex US		
Country	No. of Cons	Wgt %	No. of Cons	Wgt %	Diff %
Australia	60	4.96	108	6.58	-1.62
Austria	7	0.29	7	0.17	0.12
Belgium	11	0.71	15	0.82	-0.11
Canada	91	9.91	48	8.43	1.48
Denmark	14	0.99	17	2.84	-1.84
Finland	19	1.21	14	0.81	0.40
France	66	9.52	69	9.65	-0.14
Germany	64	9.26	70	7.19	2.07
Hong Kong	26	1.13	72	1.72	-0.59
Ireland	4	0.18	5	0.24	-0.06
Israel	8	0.29	30	0.55	-0.26
Italy	31	3.85	35	2.48	1.37
Japan	282	22.76	506	22.37	0.39
Korea	56	4.26	159	4.62	-0.36
Netherlands	29	2.69	31	4.15	-1.47
New Zealand	1	0.02	15	0.25	-0.24
Norway	13	0.78	18	0.54	0.23
Poland	5	0.20	10	0.28	-0.08
Portugal	4	0.24	4	0.14	0.10
Singapore	16	0.67	36	1.07	-0.39
Spain	26	3.13	25	2.29	0.84
Sweden	44	2.36	52	2.69	-0.34
Switzerland	42	5.46	52	7.61	-2.15
UK	110	15.15	103	12.52	2.63
Totals	1029	100.00	1501	100.00	

Top 10 Constituents - FTSE RAFI US 1000 (% Weight)

Constituent	ICB Sector	FTSE RAFI US 1000 (Wgt %)	FTSE Global Equity Index Series w/ USA All Cap (Wgt %)	Diff %
Exxon Mobil Corporation	Oil, Gas and Coal	2.12	0.93	1.19
Microsoft Corp	Software and Computer Services	1.98	6.23	-4.25
JPMorgan Chase & Co	Banks	1.97	1.15	0.82
Apple Inc.	Technology Hardware and Equipment	1.87	4.98	-3.11
Berkshire Hathaway B	Investment Banking and Brokerage Services	1.62	1.09	0.53
Amazon.Com	Retailers	1.60	3.23	-1.63
Verizon Communications	Telecommunications Service Providers	1.32	0.35	0.97
Bank of America	Banks	1.22	0.52	0.70
Chevron	Oil, Gas and Coal	1.22	0.54	0.68
Citigroup	Banks	1.15	0.24	0.91
Totals		16.07	19.26	

Top 10 Constituents - FTSE RAFI Developed ex US 1000 (% Weight)

Constituent	Country	ICB Sector	FTSE RAFI Developed ex US 1000 (Wgt %)	FTSE Developed Ex US (Wgt %)	Diff %
Shell	United Kingdom	Oil, Gas and Coal	2.35	1.04	1.31
Samsung Electronics	South Korea	Telecommunications Equipment	1.63	1.40	0.23
Toyota Motor	Japan	Automobiles and Parts	1.43	1.44	-0.01
TotalEnergies SE	France	Oil, Gas and Coal	1.37	0.68	0.69
BP	United Kingdom	Oil, Gas and Coal	1.20	0.50	0.70
Nestle	Switzerland	Food Producers	0.92	1.37	-0.44
BHP Group	Australia	Industrial Metals and Mining	0.88	0.70	0.18
HSBC Hldgs	United Kingdom	Banks	0.85	0.72	0.13
Allianz SE	Germany	Nonlife Insurance	0.78	0.56	0.21
Mitsubishi UFJ Financial	Japan	Banks	0.77	0.55	0.22
Totals			12.18	8.96	



© 2024 London Stock Exchange Group plc and its applicable group undertakings ("LSEG"). LSEG includes (1) FTSE International Limited ("FTSE"), (2) Frank Russell Company ("Russell"), (3) FTSE Global Debt Capital Markets Inc. and FTSE Global Debt Capital Markets Limited (together, "FTSE Canada"), (4) FTSE Fixed Income Europe Limited ("FTSE FI Europe"), (5) FTSE Fixed Income LLC ("FTSE FI"), (6) FTSE (Beijing) Consulting Limited ("WOFI") (7) Refinitiv Benchmark Services (UK) Limited ("RBSL"), (8) Refinitiv Limited ("RL") and (9) Beyond Ratings S.A.S. ("BR"). All rights reserved.

FTSE Russell® is a trading name of FTSE, Russell, FTSE Canada, FTSE FI, FTSE FI Europe, WOFI, RBSL, RL, and BR. "FTSE®", "Russell®", "FTSE Russell®", "FTSE4Good®", "ICB®", "Refinitiv", "Beyond Ratings®", "WMR™", "FR™" and all other trademarks and service marks used herein (whether registered or unregistered) are trademarks and/or service marks owned or licensed by the applicable member of LSEG or their respective licensors and are owned, or used under licence, by FTSE, Russell, FTSE Canada, FTSE FI, FTSE FI Europe, WOFI, RBSL, RL or BR. FTSE International Limited is authorised and regulated by the Financial Conduct Authority as a benchmark administrator. Refinitiv Benchmark Services (UK) Limited is authorised and regulated by the Financial Conduct Authority as a benchmark administrator.

Research Affiliates® and Fundamental Index® are trade marks of RA. "Fundamental Index®" and/or "Research Affiliates Fundamental Index®" and/or "RAFI" and/or all other RA trademarks, trade names, patented and patent-pending concepts are the exclusive property of Research Affiliates, LLC.

The FTSE Research Affiliates Fundamental Indexes ("FTSE Russell RAFI Indexes") are calculated by FTSE RA. All rights in and to the FTSE Russell RAFI Indexes vest in FTSE Russell® and/or its relevant Partner(s).

All information is provided for information purposes only. All information and data contained in this publication is obtained by the LSE Group, from sources believed by it to be accurate and reliable. Because of the possibility of human and mechanical error as well as other factors, however, such information and data is provided "as is" without warranty of any kind. No member of the LSE Group nor their respective directors, officers, employees, partners or licensors make any claim, prediction, warranty or representation whatsoever, expressly or impliedly, either as to the accuracy, timeliness, completeness, merchantability of any information or of results to be obtained from the use of FTSE Russell products, including but not limited to indexes, data and analytics, or the fitness or suitability of the FTSE Russell products for any particular purpose to which they might be put. Any representation of historical data accessible through FTSE Russell products is provided for information purposes only and is not a reliable indicator of future performance.

No responsibility or liability can be accepted by any member of the LSE Group nor their respective directors, officers, employees, partners or licensors for (a) any loss or damage in whole or in part caused by, resulting from, or relating to any error (negligent or otherwise) or other circumstance involved in procuring, collecting, compiling, interpreting, analysing, editing, transcribing, transmitting, communicating or delivering any such information or data or from use of this document or links to this document or (b) any direct, indirect, special, consequential or incidental damages whatsoever, even if any member of the LSE Group is advised in advance of the possibility of such damages, resulting from the use of, or inability to use, such information.

No member of the LSE Group nor their respective directors, officers, employees, partners or licensors provide investment advice and nothing contained herein or accessible through FTSE Russell products, including statistical data and industry reports, should be taken as constituting financial or investment advice or a financial promotion.

Past performance is no guarantee of future results. Charts and graphs are provided for illustrative purposes only. Index returns shown may not represent the results of the actual trading of investable assets. Certain returns shown may reflect back-tested performance. All performance presented prior to the index inception date is back-tested performance. Back-tested performance is not actual performance, but is hypothetical. The back-test calculations are based on the same methodology that was in effect when the index was officially launched. However, back-tested data may reflect the application of the index methodology with the benefit of hindsight, and the historic calculations of an index may change from month to month based on revisions to the underlying economic data used in the calculation of the index.

No part of this information may be reproduced, stored in a retrieval system or transmitted in any form or by any means, electronic, mechanical, photocopying, recording or otherwise, without prior written permission of the applicable member of the LSE Group. Use and distribution of the LSE Group data requires a licence from FTSE, Russell, FTSE Canada, MTSNext, Mergent, FTSE FI, YB, BR and/or their respective licensors.

Data definitions available from
info@ftserussell.com

To learn more, visit lseg.com/ftse-russell;
email info@ftserussell.com; or
call your regional Client Services Team office:

EMEA

+44 (0) 20 7866 1810

North America

+1 877 503 6437

Asia-Pacific

Hong Kong +852 2164 3333

Tokyo +81 3 6441 1430

Sydney +61 (0) 2 7228 5659