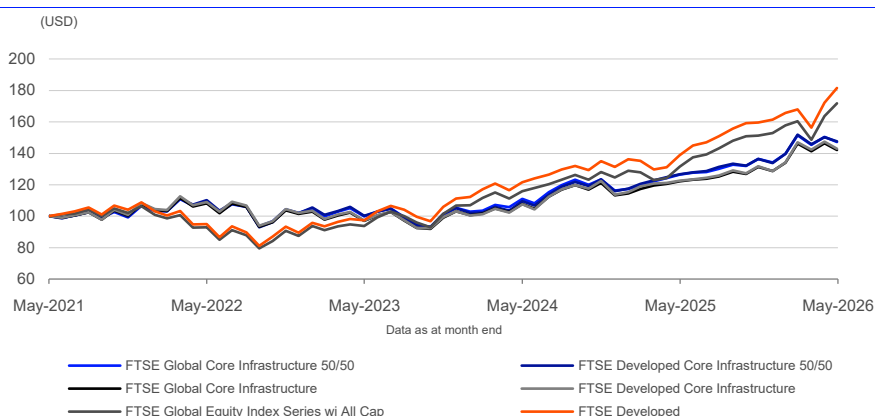


# FTSE Core Infrastructure 50/50 Indices

Data as at: 29 May 2026

The FTSE Global Core Infrastructure 50/50 Index and FTSE Developed Core Infrastructure 50/50 Index give participants an industry-defined interpretation of infrastructure and adjust the exposure to certain infrastructure sub-sectors. The constituent weights for these indices are adjusted as part of the semi-annual review according to three broad industry sectors – 50% Utilities, 30% Transportation including capping of 7.5% for railroads/railways and a 20% mix of other sectors including pipelines, satellites and telecommunication towers. Company weights within each group are adjusted in proportion to their investable market capitalisation.

## 5-Year Performance - Total Return



## Performance and Volatility - Total Return

Index (USD)	Return %						Return pa %*		Volatility %**		
	3M	6M	YTD	12M	3YR	5YR	3YR	5YR	1YR	3YR	5YR
FTSE Global Core Infrastructure 50/50	-2.9	7.9	9.7	16.4	47.3	47.2	13.8	8.0	8.8	11.8	14.1
FTSE Developed Core Infrastructure 50/50	-2.8	8.3	10.4	16.5	47.2	47.7	13.8	8.1	9.4	12.5	14.7
FTSE Global Core Infrastructure	-2.8	8.3	10.5	16.4	46.6	42.2	13.6	7.3	9.4	12.2	14.7
FTSE Developed Core Infrastructure	-2.7	8.6	11.1	16.7	47.0	43.0	13.7	7.4	10.1	12.7	15.1
FTSE Global Equity Index Series wi All Cap	7.2	13.7	12.5	30.7	83.4	71.9	22.4	11.4	10.4	12.3	15.1
FTSE Developed	8.1	13.7	12.5	30.7	86.5	81.5	23.1	12.7	10.7	12.2	15.3

\* Compound annual returns measured over 3 and 5 years respectively

\*\* Volatility – 1YR based on 12 months daily data. 3YR based on weekly data (Wednesday to Wednesday). 5YR based on monthly data

## Year-on-Year Performance - Total Return

Index % (USD)	2016	2017	2018	2019	2020	2021	2022	2023	2024	2025
FTSE Global Core Infrastructure 50/50	11.8	19.3	-3.2	26.1	-3.3	15.7	-4.1	3.1	10.5	15.3
FTSE Developed Core Infrastructure 50/50	11.6	19.2	-3.7	26.2	-3.0	15.9	-5.0	3.2	10.3	15.5
FTSE Global Core Infrastructure	13.1	16.9	-0.9	26.3	-0.7	17.8	-5.8	1.6	9.8	13.7
FTSE Developed Core Infrastructure	13.1	16.2	-0.5	26.4	0.1	18.8	-5.8	1.0	10.2	13.3
FTSE Global Equity Index Series wi All Cap	9.0	24.4	-9.6	27.1	16.8	18.5	-17.9	22.2	16.8	22.6
FTSE Developed	8.2	23.9	-8.6	28.0	16.7	21.4	-17.8	24.2	18.2	22.8

## FEATURES

### Coverage

Constituents are selected from the FTSE Global All Cap Index using FTSE Russell's definition of infrastructure. FTSE Russell applies minimum infrastructure revenue thresholds of 65% for constituents of the Core Infrastructure indices and 20% for constituents of the Infrastructure Opportunities indices.

### Objective

The indices are designed for the creation of index tracking funds, derivatives and as a performance benchmark.

### Investability

Stocks are selected and weighted to ensure that the index is investable.

### Liquidity

Stocks are screened to ensure that the index is tradable.

### Capping

The indices are capped semi-annually to adjust the exposure to certain infrastructure sub-sectors and limit company weights to 5%.

### Transparency

Index methodologies are freely available on the FTSE Russell website.

### Availability

The indices are calculated based on price and total return methodologies, on an end-of-day basis. Tax adjusted and hedged versions of the indices are also available.

### Industry Classification Benchmark (ICB)

Index constituents are categorized in accordance with the Industry Classification Benchmark (ICB), the global standard for industry sector analysis. Constituents are screened according to ICB Subsectors that meet FTSE's definition of infrastructure.

## Return/Risk Ratio and Drawdown - Total Return

Index (USD)	Return/Risk Ratio				Drawdown (%)			
	1YR	3YR	5YR	10YR	1YR	3YR	5YR	10YR
FTSE Global Core Infrastructure 50/50	1.9	1.2	0.6	0.6	-5.9	-13.8	-20.4	-36.8
FTSE Developed Core Infrastructure 50/50	1.8	1.1	0.6	0.6	-5.9	-14.3	-22.1	-37.6
FTSE Global Core Infrastructure	1.8	1.2	0.5	0.7	-5.5	-13.9	-20.8	-35.3
FTSE Developed Core Infrastructure	1.7	1.1	0.5	0.7	-5.6	-14.3	-21.7	-35.2
FTSE Global Equity Index Series w/ All Cap	2.8	1.8	0.8	0.9	-9.3	-15.9	-26.1	-34.3
FTSE Developed	2.8	1.9	0.8	0.9	-9.1	-16.1	-26.1	-34.0

Return/Risk Ratio – based on compound annual returns and volatility in Performance and Volatility table  
Drawdown - based on daily data

## Top 10 Constituents - FTSE Global Core Infrastructure 50/50

Constituent	Country/Market	ICB Sector	Net MCap (USDm)	Wgt %
NextEra Energy Inc	USA	Electricity	157,311	4.84
Union Pacific Corp	USA	Industrial Transportation	128,455	3.95
Transurban Group	Australia	Industrial Transportation	111,407	3.42
Enbridge	Canada	Oil Gas and Coal	100,058	3.08
Southern Co	USA	Electricity	91,357	2.81
Duke Energy Corp	USA	Gas Water and Multi-utilities	85,998	2.64
American Tower Corp	USA	Real Estate Investment Trusts	73,074	2.25
Williams Cos	USA	Oil Gas and Coal	72,651	2.23
National Grid	UK	Gas Water and Multi-utilities	71,949	2.21
CSX Corp	USA	Industrial Transportation	69,480	2.14
<b>Totals</b>			<b>961,741</b>	<b>29.57</b>

## ICB Subsector Breakdown - FTSE Global Core Infrastructure 50/50

ICB Code	ICB Subsector	FTSE Global Core Infrastructure 50/50			FTSE Global Core Infrastructure		
		No. of Cons	Net MCap (USDm)	Wgt %	No. of Cons	Net MCap (USDm)	Wgt %
15101010	Telecommunications Equipment	6	34,322	1.06	6	40,990	1.26
15102015	Telecommunications Services	15	45,057	1.39	15	53,801	1.66
35102025	Infrastructure REITs	4	124,857	3.84	4	149,125	4.59
50101010	Construction	1	288	0.01	1	86	0.00
50206020	Railroads	17	428,443	13.17	17	522,848	16.10
50206060	Transportation Services	74	580,006	17.83	74	173,644	5.35
60101035	Pipelines	14	462,891	14.23	14	552,861	17.02
65101010	Alternative Electricity	4	10,142	0.31	4	11,238	0.35
65101015	Conventional Electricity	69	1,021,718	31.41	69	1,138,955	35.07
65102000	Multi-utilities	12	316,620	9.73	12	350,827	10.80
65102020	Gas Distribution	38	145,129	4.46	38	160,802	4.95
65102030	Water	22	83,307	2.56	22	92,307	2.84
<b>Totals</b>		<b>276</b>	<b>3,252,781</b>	<b>100.00</b>	<b>276</b>	<b>3,247,486</b>	<b>100.00</b>

## INFORMATION

## Index Universe

FTSE Global Core Infrastructure Index and  
FTSE Developed Core Infrastructure Index

## Index Launch

26 February 2015

## Base Date

31 December 2009

## Base Value

1000

## Investability Screen

Actual free float applied and liquidity  
screened

## Index Calculation

End-of-day

## End-of-Day Distribution

Via FTP and email

## Currency

USD, EUR, GBP, JPY, AUD and CAD

## Review Dates

Semi-annually in March & September

## History

Available from December 2005

## Fundamental Research

Fundamental research on the constituents of  
the FTSE Infrastructure Index Series is  
provided by LPX Group.

## LPX Group Website

www.lpx-group.com

## ICB Subsector Breakdown - FTSE Developed Core Infrastructure 50/50

ICB Code	ICB Subsector	FTSE Developed Core Infrastructure 50/50			FTSE Developed Core Infrastructure 50/50		
		No. of Cons	Net MCap (USDm)	Wgt %	No. of Cons	Net MCap (USDm)	Wgt %
15101010	Telecommunications Equipment	5	32,207	1.08	5	40,821	1.37
15102015	Telecommunications Services	8	30,254	1.01	8	38,345	1.28
35102025	Infrastructure REITs	3	117,060	3.91	3	148,369	4.97
50206020	Railroads	11	394,833	13.19	11	516,784	17.30
50206060	Transportation Services	9	538,569	17.99	9	81,140	2.72
60101035	Pipelines	12	436,094	14.57	12	552,731	18.51
65101015	Conventional Electricity	47	932,485	31.15	47	1,046,999	35.05
65102000	Multi-utilities	12	319,833	10.68	12	350,827	11.75
65102020	Gas Distribution	21	129,097	4.31	21	141,608	4.74
65102030	Water	8	63,019	2.11	8	69,126	2.31
<b>Totals</b>		<b>136</b>	<b>2,993,451</b>	<b>100.00</b>	<b>136</b>	<b>2,986,749</b>	<b>100.00</b>

## Country/Market Breakdown - FTSE Global Core Infrastructure 50/50

Country/Market	FTSE Global Core Infrastructure 50/50			FTSE Global Core Infrastructure 50/50		
	No. of Cons	Net MCap (USDm)	Wgt %	No. of Cons	Net MCap (USDm)	Wgt %
Australia	6	137,296	4.22	6	54,430	1.68
Austria	1	1,055	0.03	1	1,169	0.04
Belgium	1	6,164	0.19	1	6,830	0.21
Brazil	16	64,610	1.99	16	52,324	1.61
Canada	12	368,646	11.33	12	437,936	13.49
Chile	4	3,551	0.11	4	3,935	0.12
China	64	71,172	2.19	64	40,547	1.25
Colombia	1	3,121	0.10	1	3,458	0.11
France	4	27,463	0.84	4	17,320	0.53
Germany	1	10,193	0.31	1	3,051	0.09
Greece	6	12,098	0.37	6	9,917	0.31
Hong Kong	5	41,845	1.29	5	46,954	1.45
India	19	111,083	3.42	19	65,677	2.02
Indonesia	5	2,588	0.08	5	2,230	0.07
Italy	5	36,153	1.11	5	41,362	1.27
Japan	19	102,779	3.16	19	117,869	3.63
Korea	3	6,676	0.21	3	7,397	0.23
Malaysia	3	20,476	0.63	3	18,380	0.57
Mexico	4	68,688	2.11	4	20,562	0.63
New Zealand	2	27,648	0.85	2	8,802	0.27
Philippines	3	46,649	1.43	3	15,796	0.49
Portugal	1	1,304	0.04	1	1,445	0.04
Saudi Arabia	1	3,168	0.10	1	3,510	0.11
Singapore	2	5,254	0.16	2	3,231	0.10
Spain	5	103,857	3.19	5	62,415	1.92
Switzerland	1	19,125	0.59	1	5,725	0.18
Taiwan	1	1,310	0.04	1	1,599	0.05
Thailand	8	28,797	0.89	8	11,188	0.34
Turkiye	2	3,652	0.11	2	1,418	0.04
UAE	3	18,472	0.57	3	10,197	0.31
UK	8	114,396	3.52	8	123,598	3.81
USA	60	1,783,495	54.83	60	2,047,214	63.04
<b>Totals</b>	<b>276</b>	<b>3,252,781</b>	<b>100.00</b>	<b>276</b>	<b>3,247,486</b>	<b>100.00</b>

## Country/Market Breakdown - FTSE Developed Core Infrastructure 50/50

Country/Market	FTSE Developed Core Infrastructure 50/50			FTSE Developed Core Infrastructure		
	No. of Cons	Net MCap (USDm)	Wgt %	No. of Cons	Net MCap (USDm)	Wgt %
Australia	6	205,160	6.85	6	54,430	1.82
Austria	1	1,066	0.04	1	1,169	0.04
Belgium	1	6,227	0.21	1	6,830	0.23
Canada	12	350,482	11.71	12	437,936	14.66
France	4	51,855	1.73	4	17,320	0.58
Germany	1	24,803	0.83	1	3,051	0.10
Hong Kong	5	41,862	1.40	5	46,954	1.57
Italy	5	35,495	1.19	5	41,362	1.38
Japan	19	101,061	3.38	19	117,869	3.95
Korea	3	6,744	0.23	3	7,397	0.25
New Zealand	2	66,354	2.22	2	8,802	0.29
Portugal	1	1,317	0.04	1	1,445	0.05
Singapore	2	10,022	0.33	2	3,231	0.11
Spain	5	185,098	6.18	5	62,415	2.09
Switzerland	1	46,538	1.55	1	5,725	0.19
UK	8	121,304	4.05	8	123,598	4.14
USA	60	1,738,063	58.06	60	2,047,214	68.54
<b>Totals</b>	<b>136</b>	<b>2,993,451</b>	<b>100.00</b>	<b>136</b>	<b>2,986,749</b>	<b>100.00</b>

## Index Characteristics

Attributes	FTSE Global Core Infrastructure 50/50	FTSE Developed Core Infrastructure 50/50	FTSE Global Core Infrastructure	FTSE Developed Core Infrastructure
Number of constituents	276	136	276	136
Net MCap (USDm)	3,252,781	2,993,451	3,247,486	2,986,749
Dividend Yield %	3.23	3.26	3.17	3.11
Constituent Sizes (Net MCap USDm)				
Average	11,785	22,011	11,766	21,961
Largest	157,311	164,230	181,160	181,160
Smallest	37	139	44	152
Median	3,093	9,873	2,581	9,412
Weight of Largest Constituent (%)	4.84	5.49	5.58	6.07
Top 10 Holdings (% Index MCap)	29.57	35.41	33.04	35.92

© 2026 London Stock Exchange Group plc and its applicable group undertakings ("LSEG"). LSEG includes (1) FTSE International Limited ("FTSE"), (2) Frank Russell Company ("Russell"), (3) FTSE Global Debt Capital Markets Inc. "FTSE Canada", (4) FTSE Fixed Income LLC ("FTSE FI"), (5) FTSE (Beijing) Consulting Limited ("WOFE"). All rights reserved.

FTSE Russell® is a trading name of FTSE, Russell, FTSE Canada, FTSE FI, WOFE, and other LSEG entities providing LSEG Benchmark and Index services. "FTSE®", "Russell®", "FTSE Russell®", "FTSE4Good®", "ICB®", "Refinitiv", "Beyond Ratings®", "WMR™", "FR™" and all other trademarks and service marks used herein (whether registered or unregistered) are trademarks and/or service marks owned or licensed by the applicable member of LSEG or their respective licensors.

FTSE International Limited is authorised and regulated by the Financial Conduct Authority as a benchmark administrator.

All information is provided for information purposes only. All information and data contained in this publication is obtained by LSEG, from sources believed by it to be accurate and reliable. Because of the possibility of human and mechanical inaccuracy as well as other factors, however, such information and data is provided "as is" without warranty of any kind. No member of LSEG nor their respective directors, officers, employees, partners or licensors make any claim, prediction, warranty or representation whatsoever, expressly or impliedly, either as to the accuracy, timeliness, completeness, merchantability of any information or LSEG Products, or of results to be obtained from the use of LSEG products, including but not limited to indices, rates, data and analytics, or the fitness or suitability of the LSEG products for any particular purpose to which they might be put. The user of the information assumes the entire risk of any use it may make or permit to be made of the information.

No responsibility or liability can be accepted by any member of LSEG nor their respective directors, officers, employees, partners or licensors for (a) any loss or damage in whole or in part caused by, resulting from, or relating to any inaccuracy (negligent or otherwise) or other circumstance involved in procuring, collecting, compiling, interpreting, analysing, editing, transcribing, transmitting, communicating or delivering any such information or data or from use of this document or links to this document or (b) any direct, indirect, special, consequential or incidental damages whatsoever, even if any member of LSEG is advised in advance of the possibility of such damages, resulting from the use of, or inability to use, such information.

No member of LSEG nor their respective directors, officers, employees, partners or licensors provide investment advice and nothing in this document should be taken as constituting financial or investment advice. No member of LSEG nor their respective directors, officers, employees, partners or licensors make any representation regarding the advisability of investing in any asset or whether such investment creates any legal or compliance risks for the investor. A decision to invest in any such asset should not be made in reliance on any information herein. Indices and rates cannot be invested in directly. Inclusion of an asset in an index or rate is not a recommendation to buy, sell or hold that asset nor confirmation that any particular investor may lawfully buy, sell or hold the asset or an index or rate containing the asset. The general information contained in this publication should not be acted upon without obtaining specific legal, tax, and investment advice from a licensed professional.

Past performance is no guarantee of future results. Charts and graphs are provided for illustrative purposes only. Index and/or rate returns shown may not represent the results of the actual trading of investable assets. Certain returns shown may reflect back-tested performance. All performance presented prior to the index or rate inception date is back-tested performance. Back-tested performance is not actual performance, but is hypothetical. The back-test calculations are based on the same methodology that was in effect when the index or rate was officially launched. However, back-tested data may reflect the application of the index or rate methodology with the benefit of hindsight, and the historic calculations of an index or rate may change from month to month based on revisions to the underlying economic data used in the calculation of the index or rate.

No part of this information may be reproduced, stored in a retrieval system or transmitted in any form or by any means, electronic, mechanical, photocopying, recording or otherwise, without prior written permission of the applicable member of LSEG. Use and distribution of LSEG data requires a licence from LSEG and/or its licensors.

Data definitions available from  
[info@ftserussell.com](mailto:info@ftserussell.com)

To learn more, visit [lseg.com/ftse-russell](https://lseg.com/ftse-russell);  
email [info@ftserussell.com](mailto:info@ftserussell.com); or  
call your regional Client Services Team office:

#### EMEA

+44 (0) 20 7866 1810

#### North America

+1 877 503 6437

#### Asia-Pacific

Hong Kong +852 2164 3333

Tokyo +81 3 6441 1430

Sydney +61 (0) 2 7228 5659