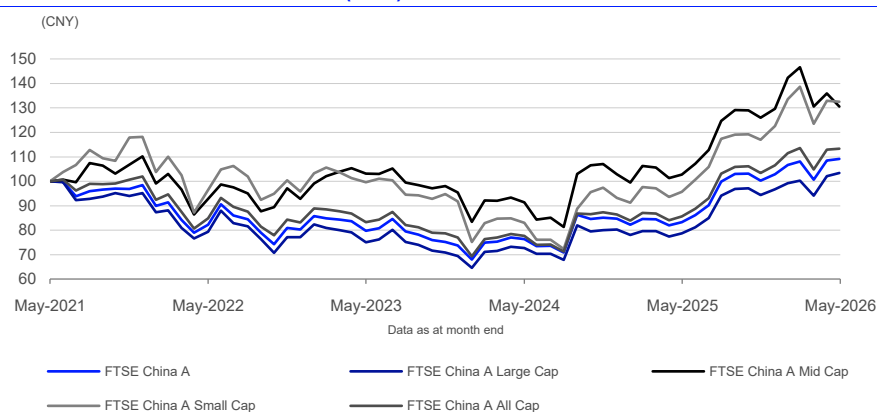


# FTSE Global China A Inclusion Index Series

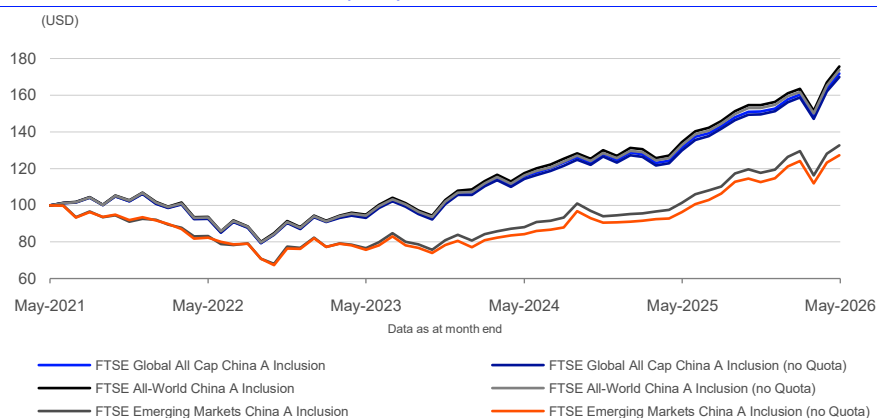
Data as at: 29 May 2026

The FTSE Global China A Inclusion Index Series is a series of benchmarks providing market participants with a choice of how to include China A Shares in global benchmarks. There are two versions of FTSE Global China A Inclusion Indexes. The headline version provides investors with an indication of China A Shares weights in FTSE global indexes based on the aggregate approved QFII/RQFII quota. The “no Quota” version provides an indication of China A Shares weights in FTSE global indexes at their full investability weight.

## 5-Year Performance - Total Return (CNY)



## 5-Year Performance - Total Return (USD)



## Performance and Volatility - Total Return (CNY)

Index (CNY)	Return %						Return pa %*		Volatility %**		
	3M	6M	YTD	12M	3YR	5YR	3YR	5YR	1YR	3YR	5YR
FTSE China A	0.9	8.8	6.1	30.9	36.9	9.1	11.0	1.8	14.6	17.0	17.9
FTSE China A Large Cap	3.1	9.5	6.9	31.3	37.7	3.4	11.3	0.7	14.4	16.5	17.9
FTSE China A Mid Cap	-11.0	3.6	0.7	27.1	26.5	30.5	8.2	5.5	17.5	21.2	21.1
FTSE China A Small Cap	-4.4	13.3	8.1	38.5	33.1	32.5	10.0	5.8	19.8	22.6	23.6
FTSE China A All Cap	-0.2	9.7	6.5	32.4	36.2	13.4	10.8	2.5	15.3	17.6	18.3
FTSE China Inclusion (no Quota)	-4.9	-5.0	-4.4	11.9	36.0	-7.8	10.8	-1.6	15.4	19.9	21.0

\* Compound annual returns measured over 3 and 5 years respectively

\*\* Volatility – 1YR based on 12 months daily data. 3YR based on weekly data (Wednesday to Wednesday). 5YR based on monthly data

## FEATURES

### Coverage

FTSE Global Equity Indexes plus China A Shares. China A Shares can be weighted by aggregate approved quota, no quota restrictions, or a customised quota allocation.

### Objective

The indexes are designed for the creation of index tracking funds, derivatives and as a performance benchmark.

### Investability

Stocks are selected and weighted to ensure that the index is investable.

### Liquidity

Stocks are screened to ensure that the index is tradable.

### Transparency

Index methodologies are freely available on the FTSE Russell website.

### Availability

The index is calculated based on price and total return methodologies at end of day. Net Total Return indexes are also calculated.

### Industry Classification Benchmark (ICB)

Index constituents are categorized in accordance with the Industry Classification Benchmark (ICB), the global standard for industry sector analysis.

**Performance and Volatility - Total Return (USD)**

Index (USD)	Return %						Return pa %*		Volatility %**		
	3M	6M	YTD	12M	3YR	5YR	3YR	5YR	1YR	3YR	5YR
FTSE Global All Cap China A Inclusion	7.2	13.7	12.5	30.7	83.4	71.8	22.4	11.4	10.4	12.3	15.0
FTSE Global All Cap China A Inclusion (no Quota)	7.0	13.7	12.4	30.9	82.4	70.0	22.2	11.2	10.3	12.2	14.9
FTSE All-World China A Inclusion	7.5	13.6	12.3	30.7	85.1	75.7	22.8	11.9	10.3	12.2	14.9
FTSE All-World China A Inclusion (no Quota)	7.4	13.6	12.3	30.9	84.3	73.8	22.6	11.7	10.2	12.1	14.8
FTSE Emerging Markets China A Inclusion	2.5	12.9	11.1	31.0	73.2	32.7	20.1	5.8	14.3	15.3	15.7
FTSE Emerging Markets China A Inclusion (no Quota)	2.4	13.0	10.8	32.2	68.2	27.2	18.9	4.9	13.9	14.7	15.6

\* Compound annual returns measured over 3 and 5 years respectively

\*\* Volatility – 1YR based on 12 months daily data. 3YR based on weekly data (Wednesday to Wednesday). 5YR based on monthly data

**Year-on-Year Performance - Total Return (CNY)**

Index % (CNY)	2016	2017	2018	2019	2020	2021	2022	2023	2024	2025
FTSE China A	-12.1	13.3	-26.1	36.1	30.5	3.3	-18.4	-8.1	14.9	21.4
FTSE China A Large Cap	-11.2	17.6	-24.7	37.7	32.1	-0.2	-19.0	-9.9	15.6	20.4
FTSE China A Mid Cap	-15.1	-8.1	-32.5	32.0	24.4	15.6	-15.7	2.7	7.9	26.0
FTSE China A Small Cap	-19.4	-16.6	-36.2	24.9	20.5	23.3	-18.9	-4.3	1.7	31.5
FTSE China A All Cap	-13.9	6.0	-28.1	34.1	28.6	6.9	-18.5	-7.4	12.2	23.3
FTSE China Inclusion (no Quota)	-2.9	23.4	-20.0	30.3	25.4	-14.5	-16.3	-9.1	20.1	24.6

**Year-on-Year Performance - Total Return (USD)**

Index % (USD)	2016	2017	2018	2019	2020	2021	2022	2023	2024	2025
FTSE Global All Cap China A Inclusion	8.8	24.3	-9.7	27.1	16.8	18.5	-17.9	22.2	16.8	22.6
FTSE Global All Cap China A Inclusion (no Quota)	7.9	24.0	-10.4	27.2	17.2	18.3	-18.1	21.4	16.7	22.7
FTSE All-World China A Inclusion	8.5	24.6	-9.2	27.3	16.6	18.9	-17.7	22.6	17.7	23.1
FTSE All-World China A Inclusion (no Quota)	7.8	24.5	-9.7	27.4	17.0	18.6	-17.8	21.9	17.6	23.2
FTSE Emerging Markets China A Inclusion	11.6	32.0	-13.8	21.1	15.7	0.2	-17.0	9.1	12.8	26.4
FTSE Emerging Markets China A Inclusion (no Quota)	4.7	29.7	-16.9	23.4	19.2	1.2	-18.5	5.8	12.6	26.5

**Return/Risk Ratio and Drawdown - Total Return (CNY)**

Index (CNY)	Return/Risk Ratio				Drawdown (%)			
	1YR	3YR	5YR	10YR	1YR	3YR	5YR	10YR
FTSE China A	2.0	0.7	0.1	0.4	-8.3	-21.3	-33.8	-36.3
FTSE China A Large Cap	2.1	0.7	0.0	0.4	-7.7	-20.6	-36.4	-40.4
FTSE China A Mid Cap	1.4	0.4	0.3	0.2	-13.0	-27.5	-32.4	-46.2
FTSE China A Small Cap	1.8	0.5	0.2	0.1	-14.0	-34.4	-43.4	-53.6
FTSE China A All Cap	2.0	0.6	0.1	0.3	-9.4	-23.7	-35.5	-35.5
FTSE China Inclusion (no Quota)	0.7	0.6	-0.1	0.3	-13.6	-23.0	-42.7	-48.9

Return/Risk Ratio – based on compound annual returns and volatility in Performance and Volatility table

Drawdown - based on daily data

**INFORMATION****Index Universe**

FTSE Global Equity Index Series + China A Shares

**Index Launch**

5 June 2014

**Base Date**

30 December 2005

**Base Value**

1000

**Investability Screen**

Actual free float applied and liquidity screened

**Index Calculation**

End-of-day

**End-of-Day Distribution**

Via FTP and email

**Currency**

USD, EUR, GBP, JPY, AUD, CNY

**Review Dates**

Reviewed semi-annually in March and September

## Return/Risk Ratio and Drawdown - Total Return (USD)

Index (USD)	Return/Risk Ratio				Drawdown (%)			
	1YR	3YR	5YR	10YR	1YR	3YR	5YR	10YR
FTSE Global All Cap China A Inclusion	2.8	1.8	0.8	0.9	-9.2	-15.9	-26.1	-34.3
FTSE Global All Cap China A Inclusion (no Quota)	2.9	1.8	0.8	0.9	-9.2	-15.7	-26.1	-33.8
FTSE All-World China A Inclusion	2.9	1.8	0.8	0.9	-9.3	-15.6	-26.0	-33.6
FTSE All-World China A Inclusion (no Quota)	2.9	1.8	0.8	0.9	-9.2	-15.5	-26.0	-33.2
FTSE Emerging Markets China A Inclusion	2.0	1.3	0.4	0.6	-10.9	-15.1	-32.8	-35.0
FTSE Emerging Markets China A Inclusion (no Quota)	2.1	1.3	0.3	0.6	-10.5	-14.6	-33.2	-35.2

Return/Risk Ratio – based on compound annual returns and volatility in Performance and Volatility table  
 Drawdown - based on daily data

## Top 10 Constituents - FTSE China A

Constituent	ICB Supersector	Net MCap (USDm)	Wgt %
Contemporary Amperex Technology (A)	Industrial Goods and Services	77,235	2.94
Kweichow Moutai (A)	Food Beverage and Tobacco	68,907	2.62
Zhongji Innolight (A)	Telecommunications	53,064	2.02
Foxconn Industrial Internet (A)	Telecommunications	34,876	1.33
Cambricon Technologies (A)	Technology	34,049	1.29
China Merchants Bank (A)	Banks	32,437	1.23
Eoptolink Technology (A)	Telecommunications	29,000	1.10
Hygon Information Technology (A)	Technology	28,259	1.07
China Yangtze Power (A)	Utilities	28,088	1.07
Zijin Mining Group (A)	Basic Resources	25,926	0.99
<b>Totals</b>		<b>411,842</b>	<b>15.65</b>

## Top 10 Constituents - FTSE All-World China A Inclusion

Constituent	Country/Market	ICB Supersector	Net MCap (USDm)	Wgt %
Nvidia	USA	Technology	4,931,751	4.68
Apple Inc.	USA	Technology	4,486,763	4.26
Microsoft Corp	USA	Technology	3,332,551	3.16
Amazon.Com	USA	Retailers	2,590,995	2.46
Alphabet Class A	USA	Technology	2,206,451	2.09
Broadcom	USA	Technology	2,059,224	1.96
Taiwan Semiconductor Manufacturing	Taiwan	Technology	1,825,258	1.73
Alphabet Class C	USA	Technology	1,778,118	1.69
Meta Platforms Inc	USA	Technology	1,378,268	1.31
Tesla	USA	Automobiles and Parts	1,227,188	1.17
<b>Totals</b>			<b>25,816,567</b>	<b>24.51</b>

## Top 10 Constituents - FTSE All-World China A Inclusion (no Quota)

Constituent	Country/Market	ICB Supersector	Net MCap (USDm)	Wgt %
Nvidia	USA	Technology	4,931,751	4.60
Apple Inc.	USA	Technology	4,486,763	4.18
Microsoft Corp	USA	Technology	3,332,551	3.11
Amazon.Com	USA	Retailers	2,590,995	2.41
Alphabet Class A	USA	Technology	2,206,451	2.06
Broadcom	USA	Technology	2,059,224	1.92
Taiwan Semiconductor Manufacturing	Taiwan	Technology	1,825,258	1.70
Alphabet Class C	USA	Technology	1,778,118	1.66
Meta Platforms Inc	USA	Technology	1,378,268	1.28
Tesla	USA	Automobiles and Parts	1,227,188	1.14
<b>Totals</b>			<b>25,816,567</b>	<b>24.06</b>

## ICB Supersector Breakdown - All-World indices

ICB Code	ICB Supersector	FTSE All-World China A Inclusion			FTSE All-World China A Inclusion (no Quota)		
		No. of Cons	Net MCap (USDm)	Wgt %	No. of Cons	Net MCap (USDm)	Wgt %
1010	Technology	462	37,156,533	35.28	462	37,538,050	34.99
1510	Telecommunications	128	3,730,282	3.54	128	3,872,947	3.61
2010	Health Care	322	7,805,516	7.41	322	7,905,092	7.37
3010	Banks	290	8,094,056	7.68	290	8,270,362	7.71
3020	Financial Services	224	4,275,417	4.06	224	4,368,710	4.07
3030	Insurance	131	2,750,071	2.61	131	2,780,833	2.59
3510	Real Estate	227	1,864,939	1.77	227	1,882,337	1.75
4010	Automobiles and Parts	130	2,438,960	2.32	130	2,499,345	2.33
4020	Consumer Products and Services	178	1,975,749	1.88	178	2,029,757	1.89
4030	Media	60	887,625	0.84	60	902,577	0.84
4040	Retailers	102	5,438,911	5.16	102	5,448,009	5.08
4050	Travel and Leisure	113	1,373,604	1.30	113	1,386,141	1.29
4510	Food Beverage and Tobacco	197	2,537,991	2.41	197	2,665,167	2.48
4520	Personal Care Drug and Grocery Stores	99	1,466,220	1.39	99	1,473,808	1.37
5010	Construction and Materials	151	1,372,657	1.30	151	1,407,103	1.31
5020	Industrial Goods and Services	640	11,625,353	11.04	640	11,909,240	11.10
5510	Basic Resources	229	2,408,206	2.29	229	2,561,324	2.39
5520	Chemicals	161	1,138,063	1.08	161	1,233,870	1.15
6010	Energy	185	4,197,364	3.99	185	4,291,602	4.00
6510	Utilities	236	2,786,290	2.65	236	2,871,166	2.68
<b>Totals</b>		<b>4265</b>	<b>105,323,807</b>	<b>100.00</b>	<b>4265</b>	<b>107,297,440</b>	<b>100.00</b>

## ICB Supersector Breakdown - China A and Emerging indices

ICB Code	ICB Supersector	FTSE China A All Cap			FTSE Emerging Markets China A Inclusion			FTSE Emerging Markets China A Inclusion (no Quota)		
		No. of Cons	Net MCap (USDm)	Wgt %	No. of Cons	Net MCap (USDm)	Wgt %	No. of Cons	Net MCap (USDm)	Wgt %
1010	Technology	332	645,011	19.66	263	3,784,671	35.51	263	4,166,188	32.98
1510	Telecommunications	64	213,604	6.51	76	434,953	4.08	76	577,619	4.57
2010	Health Care	231	179,321	5.47	179	319,739	3.00	179	419,315	3.32
3010	Banks	43	241,535	7.36	174	1,563,765	14.67	174	1,740,072	13.78
3020	Financial Services	60	128,238	3.91	126	295,267	2.77	126	388,559	3.08
3030	Insurance	5	41,839	1.28	46	287,832	2.70	46	318,594	2.52
3510	Real Estate	70	37,019	1.13	98	180,818	1.70	98	198,216	1.57
4010	Automobiles and Parts	88	106,882	3.26	72	215,921	2.03	72	276,306	2.19
4020	Consumer Products and Services	89	86,850	2.65	85	203,126	1.91	85	257,134	2.04
4030	Media	52	32,249	0.98	29	12,370	0.12	29	27,323	0.22
4040	Retailers	28	16,897	0.51	48	409,089	3.84	48	418,187	3.31
4050	Travel and Leisure	18	19,299	0.59	45	123,363	1.16	45	135,899	1.08
4510	Food Beverage and Tobacco	91	186,196	5.67	111	251,690	2.36	111	378,865	3.00
4520	Personal Care Drug and Grocery Stores	25	13,732	0.42	45	114,525	1.07	45	122,113	0.97
5010	Construction and Materials	82	69,433	2.12	82	165,225	1.55	82	199,671	1.58
5020	Industrial Goods and Services	412	538,429	16.41	298	751,193	7.05	298	1,035,080	8.19
5510	Basic Resources	157	261,248	7.96	153	561,599	5.27	153	714,717	5.66
5520	Chemicals	163	183,350	5.59	107	166,895	1.57	107	262,703	2.08
6010	Energy	86	145,101	4.42	114	495,751	4.65	114	589,989	4.67
6510	Utilities	89	134,747	4.11	141	319,319	3.00	141	404,195	3.20
<b>Totals</b>		<b>2185</b>	<b>3,280,980</b>	<b>100.00</b>	<b>2292</b>	<b>10,657,112</b>	<b>100.00</b>	<b>2292</b>	<b>12,630,744</b>	<b>100.00</b>

## Country/Market Breakdown - All-World indices

Country/Market	FTSE All-World China A Inclusion			FTSE All-World China A Inclusion (no Quota)		
	No. of Cons	Net MCap (USDm)	Wgt %	No. of Cons	Net MCap (USDm)	Wgt %
Australia	106	1,662,592	1.58	106	1,662,592	1.55
Austria	9	80,990	0.08	9	80,990	0.08
Belgium	14	256,957	0.24	14	256,957	0.24
Brazil	67	465,721	0.44	67	465,721	0.43
Canada	84	3,091,458	2.94	84	3,091,458	2.88
Chile	21	71,530	0.07	21	71,530	0.07
China	1278	2,922,124	2.77	1278	4,895,757	4.56
Colombia	6	22,052	0.02	6	22,052	0.02
Czech Rep.	4	15,030	0.01	4	15,030	0.01
Denmark	17	359,680	0.34	17	359,680	0.34
Egypt	2	7,786	0.01	2	7,786	0.01
Finland	14	285,489	0.27	14	285,489	0.27
France	57	2,093,182	1.99	57	2,093,182	1.95
Germany	64	1,964,136	1.86	64	1,964,136	1.83
Greece	30	85,197	0.08	30	85,197	0.08
Hong Kong	66	501,793	0.48	66	501,793	0.47
Hungary	6	46,209	0.04	6	46,209	0.04
Iceland	7	7,591	0.01	7	7,591	0.01
India	276	1,642,305	1.56	276	1,642,305	1.53
Indonesia	39	80,511	0.08	39	80,511	0.08
Ireland	5	80,200	0.08	5	80,200	0.07
Israel	43	359,014	0.34	43	359,014	0.33
Italy	36	824,672	0.78	36	824,672	0.77
Japan	476	6,127,300	5.82	476	6,127,300	5.71
Korea	155	3,037,019	2.88	155	3,037,019	2.83
Kuwait	8	72,886	0.07	8	72,886	0.07
Malaysia	38	164,260	0.16	38	164,260	0.15
Mexico	34	244,717	0.23	34	244,717	0.23
Netherlands	29	1,181,743	1.12	29	1,181,743	1.10
New Zealand	11	52,268	0.05	11	52,268	0.05
Norway	15	150,755	0.14	15	150,755	0.14
Philippines	23	41,953	0.04	23	41,953	0.04
Poland	10	114,302	0.11	10	114,302	0.11
Portugal	5	45,335	0.04	5	45,335	0.04
Qatar	17	69,724	0.07	17	69,724	0.06
Romania	6	14,074	0.01	6	14,074	0.01
Saudi Arabia	64	343,082	0.33	64	343,082	0.32
Singapore	36	349,936	0.33	36	349,936	0.33
South Africa	41	412,395	0.39	41	412,395	0.38
Spain	24	843,395	0.80	24	843,395	0.79
Sweden	55	751,052	0.71	55	751,052	0.70
Switzerland	50	2,095,311	1.99	50	2,095,311	1.95
Taiwan	132	3,495,026	3.32	132	3,495,026	3.26
Thailand	44	165,730	0.16	44	165,730	0.15
Turkiye	115	103,891	0.10	115	103,891	0.10
UAE	34	163,316	0.16	34	163,316	0.15
UK	93	3,307,462	3.14	93	3,307,462	3.08
USA	499	65,050,657	61.76	499	65,050,657	60.63
<b>Totals</b>	<b>4265</b>	<b>105,323,807</b>	<b>100.00</b>	<b>4265</b>	<b>107,297,440</b>	<b>100.00</b>

## Country/Market Breakdown - Emerging indices

Country/Market	FTSE Emerging Markets China A Inclusion			FTSE Emerging Markets China A Inclusion (no Quota)		
	No. of Cons	Net MCap (USDm)	Wgt %	No. of Cons	Net MCap (USDm)	Wgt %
Brazil	67	465,721	4.37	67	465,721	3.69
Chile	21	71,530	0.67	21	71,530	0.57
China	1278	2,922,124	27.42	1278	4,895,757	38.76
Colombia	6	22,052	0.21	6	22,052	0.17
Czech Rep.	4	15,030	0.14	4	15,030	0.12
Egypt	2	7,786	0.07	2	7,786	0.06
Greece	30	85,197	0.80	30	85,197	0.67
Hungary	6	46,209	0.43	6	46,209	0.37
Iceland	7	7,591	0.07	7	7,591	0.06
India	276	1,642,305	15.41	276	1,642,305	13.00
Indonesia	39	80,511	0.76	39	80,511	0.64
Kuwait	8	72,886	0.68	8	72,886	0.58
Malaysia	38	164,260	1.54	38	164,260	1.30
Mexico	34	244,717	2.30	34	244,717	1.94
Philippines	23	41,953	0.39	23	41,953	0.33
Qatar	17	69,724	0.65	17	69,724	0.55
Romania	6	14,074	0.13	6	14,074	0.11
Saudi Arabia	64	343,082	3.22	64	343,082	2.72
South Africa	41	412,395	3.87	41	412,395	3.27
Taiwan	132	3,495,026	32.80	132	3,495,026	27.67
Thailand	44	165,730	1.56	44	165,730	1.31
Turkiye	115	103,891	0.97	115	103,891	0.82
UAE	34	163,316	1.53	34	163,316	1.29
<b>Totals</b>	<b>2292</b>	<b>10,657,112</b>	<b>100.00</b>	<b>2292</b>	<b>12,630,744</b>	<b>100.00</b>

## Index Characteristics - China A indices (CNY)

Attributes	FTSE China A	FTSE China A All Cap
Number of constituents	972	2185
Net MCap (CNYm)	17,811,510	22,207,479
Dividend Yield %	2.04	1.83
Constituent Sizes (Net MCap CNYm)		
Average	18,325	10,164
Largest	522,771	522,771
Smallest	1,290	408
Median	8,752	4,327
Weight of Largest Constituent (%)	2.94	2.35
Top 10 Holdings (% Index MCap)	15.65	12.55

## Index Characteristics - All-World indices

Attributes	FTSE All-World China A Inclusion	FTSE All-World China A Inclusion (no Quota)
Number of constituents	4265	4265
Dividend Yield %	1.58	1.58
Constituent (Wgt %)		
Average	0.02	0.02
Largest	4.68	4.60
Median	0.00	0.00
Top 10 Holdings (Wgt %)	24.51	24.06

## Index Characteristics - Emerging indices

Attributes	FTSE Emerging Markets China A Inclusion	FTSE Emerging Markets China A Inclusion (no Quota)
Number of constituents	2292	2292
Dividend Yield %	2.36	2.31
Constituent (Wgt %)		
Average	0.04	0.04
Largest	17.13	14.45
Median	0.01	0.01
Top 10 Holdings (Wgt %)	30.49	25.78

© 2026 London Stock Exchange Group plc and its applicable group undertakings ("LSEG"). LSEG includes (1) FTSE International Limited ("FTSE"), (2) Frank Russell Company ("Russell"), (3) FTSE Global Debt Capital Markets Inc. "FTSE Canada", (4) FTSE Fixed Income LLC ("FTSE FI"), (5) FTSE (Beijing) Consulting Limited ("WOFE"). All rights reserved.

FTSE Russell® is a trading name of FTSE, Russell, FTSE Canada, FTSE FI, WOFE, and other LSEG entities providing LSEG Benchmark and Index services. "FTSE®", "Russell®", "FTSE Russell®", "FTSE4Good®", "ICB®", "Refinitiv", "Beyond Ratings®", "WMR™", "FR™" and all other trademarks and service marks used herein (whether registered or unregistered) are trademarks and/or service marks owned or licensed by the applicable member of LSEG or their respective licensors.

FTSE International Limited is authorised and regulated by the Financial Conduct Authority as a benchmark administrator.

All information is provided for information purposes only. All information and data contained in this publication is obtained by LSEG, from sources believed by it to be accurate and reliable. Because of the possibility of human and mechanical inaccuracy as well as other factors, however, such information and data is provided "as is" without warranty of any kind. No member of LSEG nor their respective directors, officers, employees, partners or licensors make any claim, prediction, warranty or representation whatsoever, expressly or impliedly, either as to the accuracy, timeliness, completeness, merchantability of any information or LSEG Products, or of results to be obtained from the use of LSEG products, including but not limited to indices, rates, data and analytics, or the fitness or suitability of the LSEG products for any particular purpose to which they might be put. The user of the information assumes the entire risk of any use it may make or permit to be made of the information.

No responsibility or liability can be accepted by any member of LSEG nor their respective directors, officers, employees, partners or licensors for (a) any loss or damage in whole or in part caused by, resulting from, or relating to any inaccuracy (negligent or otherwise) or other circumstance involved in procuring, collecting, compiling, interpreting, analysing, editing, transcribing, transmitting, communicating or delivering any such information or data or from use of this document or links to this document or (b) any direct, indirect, special, consequential or incidental damages whatsoever, even if any member of LSEG is advised in advance of the possibility of such damages, resulting from the use of, or inability to use, such information.

No member of LSEG nor their respective directors, officers, employees, partners or licensors provide investment advice and nothing in this document should be taken as constituting financial or investment advice. No member of LSEG nor their respective directors, officers, employees, partners or licensors make any representation regarding the advisability of investing in any asset or whether such investment creates any legal or compliance risks for the investor. A decision to invest in any such asset should not be made in reliance on any information herein. Indices and rates cannot be invested in directly. Inclusion of an asset in an index or rate is not a recommendation to buy, sell or hold that asset nor confirmation that any particular investor may lawfully buy, sell or hold the asset or an index or rate containing the asset. The general information contained in this publication should not be acted upon without obtaining specific legal, tax, and investment advice from a licensed professional.

Past performance is no guarantee of future results. Charts and graphs are provided for illustrative purposes only. Index and/or rate returns shown may not represent the results of the actual trading of investable assets. Certain returns shown may reflect back-tested performance. All performance presented prior to the index or rate inception date is back-tested performance. Back-tested performance is not actual performance, but is hypothetical. The back-test calculations are based on the same methodology that was in effect when the index or rate was officially launched. However, back-tested data may reflect the application of the index or rate methodology with the benefit of hindsight, and the historic calculations of an index or rate may change from month to month based on revisions to the underlying economic data used in the calculation of the index or rate.

No part of this information may be reproduced, stored in a retrieval system or transmitted in any form or by any means, electronic, mechanical, photocopying, recording or otherwise, without prior written permission of the applicable member of LSEG. Use and distribution of LSEG data requires a licence from LSEG and/or its licensors.

Data definitions available from  
info@ftserussell.com

To learn more, visit [lseg.com/ftse-russell](https://lseg.com/ftse-russell);  
email [info@ftserussell.com](mailto:info@ftserussell.com); or  
call your regional Client Services Team office:

**EMEA**

+44 (0) 20 7866 1810

**North America**

+1 877 503 6437

**Asia-Pacific**

Hong Kong +852 2164 3333

Tokyo +81 3 6441 1430

Sydney +61 (0) 2 7228 5659