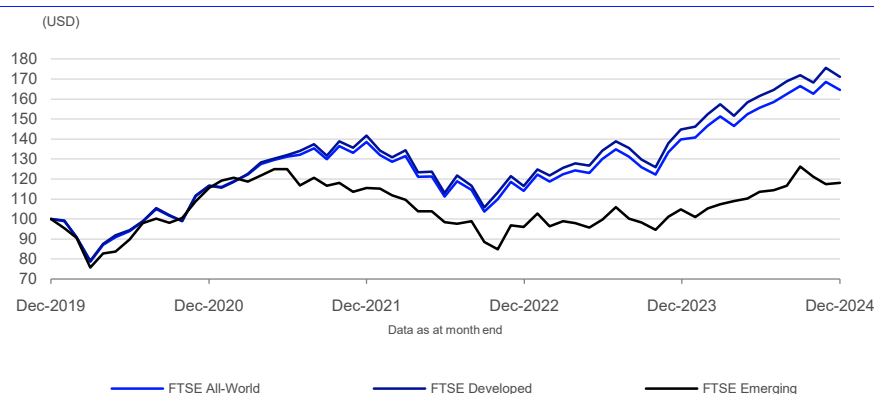


FTSE All-World Index

Data as at: 31 December 2024

The FTSE All-World Index is a market-capitalisation weighted index representing the performance of the large and mid cap stocks from the FTSE Global Equity Index Series (GEIS). The index targets 90% coverage of the 8 regions used to construct the GEIS universe. The index covers Developed and Emerging markets and is suitable as the basis for investment products, such as funds, derivatives and exchange-traded funds.

5-Year Performance - Total Return



Performance and Volatility - Total Return

Index (USD)	Return %						Return pa %*		Volatility %**		
	3M	6M	YTD	12M	3YR	5YR	3YR	5YR	1YR	3YR	5YR
FTSE All-World	-1.1	5.8	17.7	17.7	18.8	64.7	5.9	10.5	10.2	15.8	17.5
FTSE Developed	-0.5	5.9	18.2	18.2	20.8	71.1	6.5	11.3	10.6	16.4	17.9
FTSE Emerging	-6.5	4.0	12.8	12.8	2.2	18.1	0.7	3.4	12.3	15.9	17.9

* Compound annual returns measured over 3 and 5 years respectively

** Volatility – 1YR based on 12 months daily data. 3YR based on weekly data (Wednesday to Wednesday). 5YR based on monthly data

Year-on-Year Performance - Total Return

Index % (USD)	2015	2016	2017	2018	2019	2020	2021	2022	2023	2024
FTSE All-World	-1.7	8.6	24.6	-9.1	27.2	16.6	18.9	-17.7	22.6	17.7
FTSE Developed	-0.3	8.2	23.9	-8.6	28.0	16.7	21.4	-17.8	24.2	18.2
FTSE Emerging	-15.2	13.5	32.5	-13.0	20.6	15.5	0.1	-16.9	9.1	12.8

Return/Risk Ratio and Drawdown - Total Return

Index (USD)	Return/Risk Ratio				Drawdown (%)			
	1YR	3YR	5YR	10YR	1YR	3YR	5YR	10YR
FTSE All-World	1.7	0.4	0.6	0.7	-8.2	-26.0	-33.7	-33.7
FTSE Developed	1.7	0.5	0.6	0.7	-8.2	-26.1	-34.0	-34.0
FTSE Emerging	1.0	0.1	0.2	0.3	-8.8	-28.9	-34.8	-35.1

Return/Risk Ratio – based on compound annual returns and volatility in Performance and Volatility table

Drawdown – based on daily data

FEATURES

Coverage

The index is a subset of the FTSE Global Equity Index Series (GEIS), which covers 98% of the world's investable market capitalisation.

Objective

The index is designed for use in the creation of index tracking funds, derivatives and as a performance benchmark.

Investability

Stocks are selected and weighted to ensure that the index is investable.

Liquidity

Stocks are screened to ensure that the index is tradable.

Transparency

Index methodologies are freely available on the FTSE Russell website.

Availability

The index is calculated based on price and total return methodologies, both real time intra-second and end-of-day.

Industry Classification Benchmark (ICB)

Index constituents are categorized in accordance with the Industry Classification Benchmark (ICB), the global standard for industry sector analysis.

Top 10 Constituents

Constituent	Country/Market	ICB Sector	Net MCap (USDm)	Wgt %
Apple Inc.	USA	Technology Hardware and Equipment	3,579,296	4.58
Nvidia	USA	Technology Hardware and Equipment	3,138,248	4.01
Microsoft Corp	USA	Software and Computer Services	3,130,300	4.00
Amazon.Com	USA	Retailers	2,056,359	2.63
Meta Platforms Inc	USA	Software and Computer Services	1,281,112	1.64
Tesla	USA	Automobiles and Parts	1,120,809	1.43
Alphabet Class A	USA	Software and Computer Services	1,111,133	1.42
Broadcom	USA	Technology Hardware and Equipment	1,052,726	1.35
Alphabet Class C	USA	Software and Computer Services	922,845	1.18
Taiwan Semiconductor Manufacturing	Taiwan	Technology Hardware and Equipment	787,051	1.01
Totals			18,179,877	23.25

ICB Supersector Breakdown

ICB Code	ICB Supersector	No. of Cons	Net MCap (USDm)	Wgt %
1010	Technology	422	22,801,647	29.16
1510	Telecommunications	123	2,112,468	2.70
2010	Health Care	349	7,357,509	9.41
3010	Banks	281	5,643,411	7.22
3020	Financial Services	212	3,735,972	4.78
3030	Insurance	127	2,406,724	3.08
3510	Real Estate	233	1,728,999	2.21
4010	Automobiles and Parts	130	2,196,368	2.81
4020	Consumer Products and Services	182	1,980,817	2.53
4030	Media	70	1,070,515	1.37
4040	Retailers	105	4,594,539	5.88
4050	Travel and Leisure	114	1,422,783	1.82
4510	Food Beverage and Tobacco	214	2,300,233	2.94
4520	Personal Care Drug and Grocery Stores	104	1,488,229	1.90
5010	Construction and Materials	147	973,860	1.25
5020	Industrial Goods and Services	636	8,990,050	11.50
5510	Basic Resources	203	1,161,861	1.49
5520	Chemicals	176	981,296	1.26
6010	Energy	184	3,065,661	3.92
6510	Utilities	235	2,171,854	2.78
Totals		4247	78,184,799	100.00

INFORMATION

Index Universe

FTSE Global Equity Index Series

Index Launch

30 June 2000

Base Date

31 December 1986

Base Value

100

Investability Screen

Actual free float applied and liquidity screened

Index Calculation

Real-time and end-of-day index available

End-of-Day Distribution

Via FTP and email

Currency

USD, GBP, JPY, EUR and Local

Review Dates

Semi-annually in March and September

Country/Market Breakdown

Country/Market	No. of Cons	Net MCap (USDm)	Wgt %
Australia	104	1,328,353	1.70
Austria	7	38,223	0.05
Belgium	13	165,918	0.21
Brazil	81	308,168	0.39
Canada	48	1,861,203	2.38
Chile	20	40,730	0.05
China	1233	2,349,363	3.00
Colombia	4	8,471	0.01
Czech Rep.	4	10,707	0.01
Denmark	18	451,002	0.58
Egypt	1	3,867	0.00
Finland	14	160,295	0.21
France	67	1,738,157	2.22
Germany	67	1,500,149	1.92
Greece	29	46,379	0.06
Hong Kong	70	380,727	0.49
Hungary	5	21,036	0.03
Iceland	9	6,899	0.01
India	244	1,689,099	2.16
Indonesia	39	127,118	0.16
Ireland	5	47,351	0.06
Israel	29	138,971	0.18
Italy	36	493,964	0.63
Japan	495	4,483,863	5.73
Korea	159	721,258	0.92
Kuwait	8	61,944	0.08
Malaysia	39	149,034	0.19
Mexico	37	154,974	0.20
Netherlands	31	726,537	0.93
New Zealand	13	53,843	0.07
Norway	16	101,694	0.13
Philippines	23	47,466	0.06
Poland	10	53,786	0.07
Portugal	4	25,082	0.03
Qatar	17	70,673	0.09
Romania	7	10,663	0.01
Saudi Arabia	65	350,310	0.45
Singapore	35	254,234	0.33
South Africa	40	240,770	0.31
Spain	24	458,208	0.59
Sweden	53	534,398	0.68
Switzerland	53	1,556,478	1.99
Taiwan	128	1,548,919	1.98
Thailand	50	148,872	0.19
Turkiye	115	88,196	0.11
UAE	33	142,972	0.18
UK	101	2,630,428	3.36
USA	544	50,654,047	64.79
Totals	4247	78,184,799	100.00

Index Characteristics

Attributes	FTSE All-World	FTSE Developed	FTSE Emerging
Number of constituents	4247	2016	2231
Net MCap (USDm)	78,184,799	70,558,168	7,626,630
Dividend Yield %	1.85	1.75	2.74
Constituent Sizes (Net MCap USDm)			
Average	18,409	34,999	3,418
Largest	3,579,296	3,579,296	787,051
Smallest	0	114	0
Median	2,544	8,023	771
Weight of Largest Constituent (%)	4.58	5.07	10.32
Top 10 Holdings (% Index MCap)	23.25	25.60	25.08

© 2024 London Stock Exchange Group plc and its applicable group undertakings ("LSEG"). LSEG includes (1) FTSE International Limited ("FTSE"), (2) Frank Russell Company ("Russell"), (3) FTSE Global Debt Capital Markets Inc. and FTSE Global Debt Capital Markets Limited (together, "FTSE Canada"), (4) FTSE Fixed Income Europe Limited ("FTSE FI Europe"), (5) FTSE Fixed Income LLC ("FTSE FI"), (6) FTSE (Beijing) Consulting Limited ("WOFE") (7) Refinitiv Benchmark Services (UK) Limited ("RBSL"), (8) Refinitiv Limited ("RL") and (9) Beyond Ratings S.A.S. ("BR"). All rights reserved.

FTSE Russell® is a trading name of FTSE, Russell, FTSE Canada, FTSE FI, FTSE FI Europe, WOFE, RBSL, RL, and BR. "FTSE®", "Russell®", "FTSE Russell®", "FTSE4Good®", "ICB®", "Refinitiv", "Beyond Ratings®", "WMR™", "FR™" and all other trademarks and service marks used herein (whether registered or unregistered) are trademarks and/or service marks owned or licensed by the applicable member of LSEG or their respective licensors and are owned, or used under licence, by FTSE, Russell, FTSE Canada, FTSE FI, FTSE FI Europe, WOFE, RBSL, RL or BR. FTSE International Limited is authorised and regulated by the Financial Conduct Authority as a benchmark administrator. Refinitiv Benchmark Services (UK) Limited is authorised and regulated by the Financial Conduct Authority as a benchmark administrator.

All information is provided for information purposes only. All information and data contained in this publication is obtained by LSEG, from sources believed by it to be accurate and reliable. Because of the possibility of human and mechanical inaccuracy as well as other factors, however, such information and data is provided "as is" without warranty of any kind. No member of LSEG nor their respective directors, officers, employees, partners or licensors make any claim, prediction, warranty or representation whatsoever, expressly or impliedly, either as to the accuracy, timeliness, completeness, merchantability of any information or LSEG Products, or of results to be obtained from the use of LSEG products, including but not limited to indices, rates, data and analytics, or the fitness or suitability of the LSEG products for any particular purpose to which they might be put. The user of the information assumes the entire risk of any use it may make or permit to be made of the information.

No responsibility or liability can be accepted by any member of LSEG nor their respective directors, officers, employees, partners or licensors for (a) any loss or damage in whole or in part caused by, resulting from, or relating to any inaccuracy (negligent or otherwise) or other circumstance involved in procuring, collecting, compiling, interpreting, analysing, editing, transcribing, transmitting, communicating or delivering any such information or data or from use of this document or links to this document or (b) any direct, indirect, special, consequential or incidental damages whatsoever, even if any member of LSEG is advised in advance of the possibility of such damages, resulting from the use of, or inability to use, such information.

No member of LSEG nor their respective directors, officers, employees, partners or licensors provide investment advice and nothing in this document should be taken as constituting financial or investment advice. No member of LSEG nor their respective directors, officers, employees, partners or licensors make any representation regarding the advisability of investing in any asset or whether such investment creates any legal or compliance risks for the investor. A decision to invest in any such asset should not be made in reliance on any information herein. Indices and rates cannot be invested in directly. Inclusion of an asset in an index or rate is not a recommendation to buy, sell or hold that asset nor confirmation that any particular investor may lawfully buy, sell or hold the asset or an index or rate containing the asset. The general information contained in this publication should not be acted upon without obtaining specific legal, tax, and investment advice from a licensed professional.

Past performance is no guarantee of future results. Charts and graphs are provided for illustrative purposes only. Index and/or rate returns shown may not represent the results of the actual trading of investable assets. Certain returns shown may reflect back-tested performance. All performance presented prior to the index or rate inception date is back-tested performance. Back-tested performance is not actual performance, but is hypothetical. The back-test calculations are based on the same methodology that was in effect when the index or rate was officially launched. However, back-tested data may reflect the application of the index or rate methodology with the benefit of hindsight, and the historic calculations of an index or rate may change from month to month based on revisions to the underlying economic data used in the calculation of the index or rate.

No part of this information may be reproduced, stored in a retrieval system or transmitted in any form or by any means, electronic, mechanical, photocopying, recording or otherwise, without prior written permission of the applicable member of LSEG. Use and distribution of LSEG data requires a licence from LSEG and/or its licensors.

Data definitions available from
info@ftserussell.com

To learn more, visit lseg.com/ftse-russell;
email info@ftserussell.com; or
call your regional Client Services Team office:

EMEA

+44 (0) 20 7866 1810

North America

+1 877 503 6437

Asia-Pacific

Hong Kong +852 2164 3333
Tokyo +81 3 6441 1430
Sydney +61 (0) 2 7228 5659