

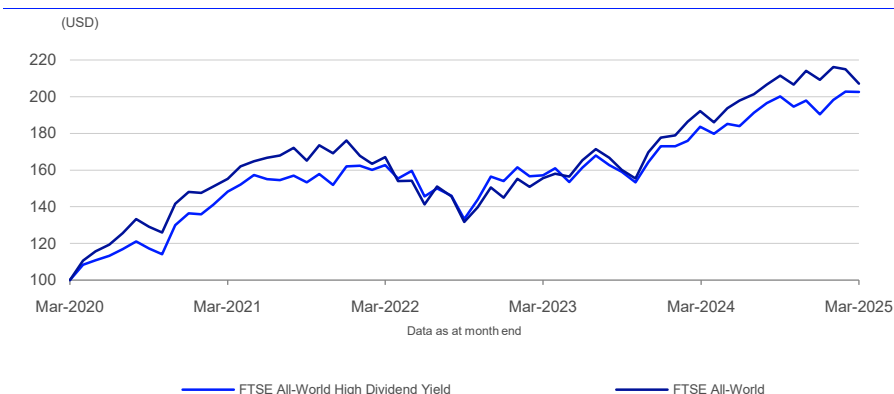
# FTSE All-World High Dividend Yield Index

Data as at: 31 March 2025

The FTSE All-World High Dividend Yield Index comprises stocks that are characterized by higher-than-average dividend yields, and is based on the FTSE All-World Index, which is part of the FTSE Global Equity Index Series.

Real estate investment trusts (REITS) (ICB Sector 8670) are removed from the index, as are stocks that are forecast to pay a zero dividend over the next 12 months ('dividends' excludes any non-regular or 'special' distributions). The remaining stocks are ranked by annual dividend yield and included in the target index until the cumulative market capitalization reaches 50% of the total market cap of this universe of stocks. Please see the index Ground Rules for more information.

## 5-Year Performance - Total Return



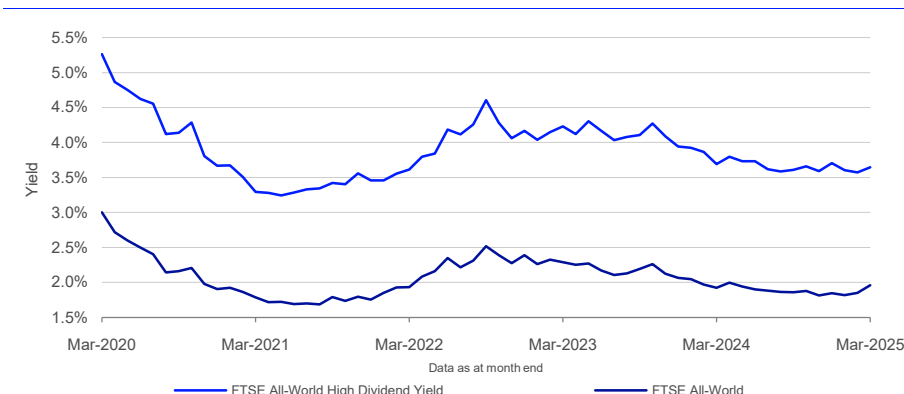
## Performance and Volatility - Total Return

Index (USD)	Return %						Return pa %*		Volatility %**		
	3M	6M	YTD	12M	3YR	5YR	3YR	5YR	1YR	3YR	5YR
FTSE All-World High Dividend Yield	6.4	1.2	6.4	10.3	24.5	102.6	7.6	15.2	9.2	13.3	14.3
FTSE All-World	-1.0	-2.1	-1.0	7.8	24.0	107.2	7.4	15.7	11.1	15.0	15.6

\* Compound annual returns measured over 3 and 5 years respectively

\*\* Volatility – 1YR based on 12 months daily data. 3YR based on weekly data (Wednesday to Wednesday). 5YR based on monthly data

## Dividend Yield



## FEATURES

### Objective

The index is designed for use in the creation of index tracking funds, derivatives and as a performance benchmark.

### Investability

Stocks are selected and weighted to ensure that the index is investable.

### Liquidity

Stocks in the underlying index are screened to ensure that the index is tradable.

### Transparency

Index rules are freely available on the FTSE website.

### Availability

The index is calculated based on price and total return methodologies.

### Industry Classification Benchmark

Index constituents are categorized in accordance with the Industry Classification Benchmark (ICB), the global standard for industry sector analysis.

Return/Risk Ratio and Drawdown - Total Return

Index (USD)	Return/Risk Ratio				Drawdown (%)			
	1YR	3YR	5YR	10YR	1YR	3YR	5YR	10YR
FTSE All-World High Dividend Yield	1.1	0.6	1.1	0.5	-6.4	-18.4	-20.6	-36.8
FTSE All-World	0.7	0.6	1.0	0.6	-8.2	-22.3	-26.0	-33.7

Return/Risk Ratio – based on compound annual returns and volatility in Performance and Volatility table  
Drawdown - based on daily data

Year-on-Year Performance - Total Return

Index % (USD)	2015	2016	2017	2018	2019	2020	2021	2022	2023	2024
FTSE All-World High Dividend Yield	-4.5	11.5	19.8	-10.9	22.2	0.5	18.8	-4.9	12.3	10.1
FTSE All-World	-1.7	8.6	24.6	-9.1	27.2	16.6	18.9	-17.7	22.6	17.7

Top 10 Constituents - FTSE All-World High Dividend Yield Index

Constituent	Country/Market	ICB Sector	FTSE All-World High Dividend Yield (Wgt %)	FTSE All-World (Wgt %)	Diff %
JPMorgan Chase & Co	USA	Banks	2.15	0.89	1.26
Exxon Mobil Corporation	USA	Oil Gas and Coal	1.63	0.68	0.96
Procter & Gamble	USA	Personal Care Drug and Grocery Stores	1.25	0.52	0.73
Johnson & Johnson	USA	Pharmaceuticals and Biotechnology	1.25	0.52	0.73
AbbVie Inc	USA	Pharmaceuticals and Biotechnology	1.16	0.48	0.68
Home Depot	USA	Retailers	1.13	0.47	0.66
Coca-Cola	USA	Beverages	0.87	0.36	0.51
Bank of America	USA	Banks	0.87	0.36	0.51
Chevron	USA	Oil Gas and Coal	0.85	0.35	0.50
Nestle	Switzerland	Food Producers	0.81	0.34	0.47
Totals			11.97	4.97	

INFORMATION

Index Universe

FTSE All-World Index

Base Date

25 March 2008

Base Value

1000

Investability Screen

Actual free float applied and liquidity screened

Index Calculation

End of day

End-of-Day Distribution

By FTP and email

Currency

USD, GBP, Euro, CHF

Review Dates

Semi annual in March and September

## ICB Supersector Breakdown

ICB Code	ICB Supersector	FTSE All-World High Dividend Yield		FTSE All-World		Diff %
		No. of Cons	Wgt %	No. of Cons	Wgt %	
1010	Technology	131	5.18	428	26.50	-21.32
1510	Telecommunications	85	5.24	123	2.92	2.32
2010	Health Care	113	10.16	348	9.91	0.25
3010	Banks	251	17.66	284	7.81	9.86
3020	Financial Services	125	5.05	217	5.00	0.05
3030	Insurance	95	5.32	129	3.46	1.87
3510	Real Estate	77	0.77	237	2.30	-1.54
4010	Automobiles and Parts	81	2.23	128	2.28	-0.05
4020	Consumer Products and Services	102	2.23	178	2.60	-0.37
4030	Media	25	0.37	65	1.25	-0.88
4040	Retailers	61	2.31	105	5.73	-3.42
4050	Travel and Leisure	52	1.68	111	1.75	-0.07
4510	Food Beverage and Tobacco	159	6.82	212	3.24	3.58
4520	Personal Care Drug and Grocery Stores	66	3.94	105	2.03	1.90
5010	Construction and Materials	90	1.28	145	1.26	0.02
5020	Industrial Goods and Services	335	10.49	631	11.77	-1.28
5510	Basic Resources	118	2.76	201	1.63	1.13
5520	Chemicals	98	1.40	166	1.28	0.12
6010	Energy	142	9.27	185	4.28	4.99
6510	Utilities	178	5.83	230	2.98	2.85
<b>Totals</b>		<b>2384</b>	<b>100.00</b>	<b>4228</b>	<b>100.00</b>	

## Country/Market Breakdown

	FTSE All-World High Dividend Yield		FTSE All-World		
Country/Market	No. of Cons	Wgt %	No. of Cons	Wgt %	Diff %
Australia	72	3.10	104	1.66	1.45
Austria	6	0.13	6	0.05	0.08
Belgium	7	0.17	13	0.24	-0.07
Brazil	69	1.00	79	0.46	0.55
Canada	29	3.54	48	2.43	1.11
Chile	18	0.13	20	0.06	0.07
China	639	3.47	1242	3.50	-0.03
Colombia	5	0.03	5	0.01	0.02
Czech Rep.	4	0.04	4	0.02	0.03
Denmark	10	0.93	18	0.52	0.41
Egypt	1	0.01	1	0.01	0.01
Finland	14	0.56	14	0.23	0.33
France	41	3.42	62	2.46	0.95
Germany	42	3.36	67	2.23	1.13
Greece	21	0.16	28	0.07	0.09
Hong Kong	54	1.11	68	0.51	0.61
Hungary	5	0.08	5	0.03	0.05
Iceland	5	0.01	8	0.01	0.00
India	53	1.21	257	2.17	-0.96
Indonesia	27	0.29	39	0.14	0.15
Ireland	3	0.08	5	0.07	0.01
Israel	18	0.25	31	0.18	0.07
Italy	24	1.47	37	0.76	0.70
Japan	321	8.77	487	5.78	2.99
Korea	78	1.41	145	0.96	0.45
Kuwait	6	0.20	8	0.09	0.11
Malaysia	33	0.38	40	0.18	0.20
Mexico	26	0.40	36	0.22	0.19
Netherlands	19	0.84	30	0.94	-0.11
New Zealand	7	0.06	12	0.06	0.00
Norway	12	0.32	15	0.15	0.17
Philippines	16	0.11	23	0.06	0.05
Poland	6	0.17	10	0.09	0.08
Portugal	4	0.09	5	0.04	0.05
Qatar	16	0.21	17	0.09	0.12
Romania	5	0.03	7	0.01	0.02
Saudi Arabia	41	0.82	66	0.46	0.36
Singapore	24	0.73	35	0.35	0.38
South Africa	32	0.63	40	0.35	0.28
Spain	18	1.60	23	0.71	0.88
Sweden	33	1.15	53	0.77	0.38
Switzerland	40	4.54	52	2.21	2.32
Taiwan	107	2.02	129	1.76	0.26
Thailand	38	0.33	46	0.17	0.16
Turkiye	41	0.14	117	0.10	0.04
UAE	24	0.40	35	0.18	0.21
UK	77	7.31	98	3.52	3.78
USA	193	42.78	538	62.92	-20.13
<b>Totals</b>	<b>2384</b>	<b>100.00</b>	<b>4228</b>	<b>100.00</b>	

Index Characteristics

Attributes	FTSE All-World High Dividend Yield	FTSE All-World
Number of constituents	2384	4228
Dividend Yield %	3.64	1.96
Constituent (Wgt %)		
Average	0.04	0.02
Largest	2.15	4.23
Median	0.01	0.00
Top 10 Holdings (Wgt %)	11.97	20.06

© 2025 London Stock Exchange Group plc and its applicable group undertakings ("LSEG"). LSEG includes (1) FTSE International Limited ("FTSE"), (2) Frank Russell Company ("Russell"), (3) FTSE Global Debt Capital Markets Inc. and FTSE Global Debt Capital Markets Limited (together, "FTSE Canada"), (4) FTSE Fixed Income Europe Limited ("FTSE FI Europe"), (5) FTSE Fixed Income LLC ("FTSE FI"), (6) FTSE (Beijing) Consulting Limited ("WOFE") (7) Refinitiv Benchmark Services (UK) Limited ("RBSL"), (8) Refinitiv Limited ("RL") and (9) Beyond Ratings S.A.S. ("BR"). All rights reserved.

FTSE Russell® is a trading name of FTSE, Russell, FTSE Canada, FTSE FI, FTSE FI Europe, WOFE, RBSL, RL, and BR. "FTSE®", "Russell®", "FTSE Russell®", "FTSE4Good®", "ICB®", "Refinitiv", "Beyond Ratings®", "WMR™", "FR™" and all other trademarks and service marks used herein (whether registered or unregistered) are trademarks and/or service marks owned or licensed by the applicable member of LSEG or their respective licensors and are owned, or used under licence, by FTSE, Russell, FTSE Canada, FTSE FI, FTSE FI Europe, WOFE, RBSL, RL or BR. FTSE International Limited is authorised and regulated by the Financial Conduct Authority as a benchmark administrator. Refinitiv Benchmark Services (UK) Limited is authorised and regulated by the Financial Conduct Authority as a benchmark administrator.

All information is provided for information purposes only. All information and data contained in this publication is obtained by LSEG, from sources believed by it to be accurate and reliable. Because of the possibility of human and mechanical inaccuracy as well as other factors, however, such information and data is provided "as is" without warranty of any kind. No member of LSEG nor their respective directors, officers, employees, partners or licensors make any claim, prediction, warranty or representation whatsoever, expressly or impliedly, either as to the accuracy, timeliness, completeness, merchantability of any information or LSEG Products, or of results to be obtained from the use of LSEG products, including but not limited to indices, rates, data and analytics, or the fitness or suitability of the LSEG products for any particular purpose to which they might be put. The user of the information assumes the entire risk of any use it may make or permit to be made of the information.

No responsibility or liability can be accepted by any member of LSEG nor their respective directors, officers, employees, partners or licensors for (a) any loss or damage in whole or in part caused by, resulting from, or relating to any inaccuracy (negligent or otherwise) or other circumstance involved in procuring, collecting, compiling, interpreting, analysing, editing, transcribing, transmitting, communicating or delivering any such information or data or from use of this document or links to this document or (b) any direct, indirect, special, consequential or incidental damages whatsoever, even if any member of LSEG is advised in advance of the possibility of such damages, resulting from the use of, or inability to use, such information.

No member of LSEG nor their respective directors, officers, employees, partners or licensors provide investment advice and nothing in this document should be taken as constituting financial or investment advice. No member of LSEG nor their respective directors, officers, employees, partners or licensors make any representation regarding the advisability of investing in any asset or whether such investment creates any legal or compliance risks for the investor. A decision to invest in any such asset should not be made in reliance on any information herein. Indices and rates cannot be invested in directly. Inclusion of an asset in an index or rate is not a recommendation to buy, sell or hold that asset nor confirmation that any particular investor may lawfully buy, sell or hold the asset or an index or rate containing the asset. The general information contained in this publication should not be acted upon without obtaining specific legal, tax, and investment advice from a licensed professional.

Past performance is no guarantee of future results. Charts and graphs are provided for illustrative purposes only. Index and/or rate returns shown may not represent the results of the actual trading of investable assets. Certain returns shown may reflect back-tested performance. All performance presented prior to the index or rate inception date is back-tested performance. Back-tested performance is not actual performance, but is hypothetical. The back-test calculations are based on the same methodology that was in effect when the index or rate was officially launched. However, back-tested data may reflect the application of the index or rate methodology with the benefit of hindsight, and the historic calculations of an index or rate may change from month to month based on revisions to the underlying economic data used in the calculation of the index or rate.

No part of this information may be reproduced, stored in a retrieval system or transmitted in any form or by any means, electronic, mechanical, photocopying, recording or otherwise, without prior written permission of the applicable member of LSEG. Use and distribution of LSEG data requires a licence from LSEG and/or its licensors.

Data definitions available from  
info@ftserussell.com

To learn more, visit lseg.com/ftse-russell;  
email info@ftserussell.com; or  
call your regional Client Services Team office:

EMEA

+44 (0) 20 7866 1810

North America

+1 877 503 6437

Asia-Pacific

Hong Kong +852 2164 3333  
Tokyo +81 3 6441 1430  
Sydney +61 (0) 2 7228 5659